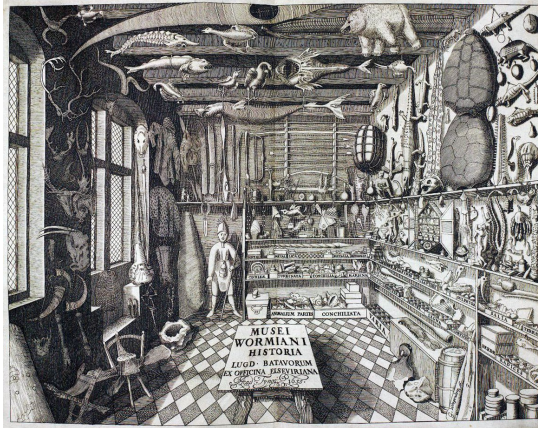


AH1648B Collecting Art and Culture

Winter 2023: Online Asynchronous (OWL)



L: Ole Worm, The Museum Wormianum, 1655



R: Rosamund Purcell, "One Room," 2011

Professor: Dr. Stephanie Anderson (She/Her)

Office: Zoom

Office hours: TBA or By Appointment

Email: sande8@uwo.ca

Teaching Assistants

TBA

Course Description

Prerequisite: none

Anti-requisite: The former VAH1045 A/B

Format: Asynchronous Online

This introductory course serves as a starting point to study the foundations of art history. It focuses on historical and contemporary practices of collecting art and cultural objects and introduces key principles of museum and curatorial studies.

Taking a thematic approach, the course explores critical histories and current debates in the field. Various kinds of museums and their histories are introduced including art museums, natural history museums, botanic gardens, zoos, etc. Within these overviews, topics include discussions of how collecting practices have changed over time; museum architecture from the 17th century through to the twenty-first; the opening up of the museum to new audiences and different curatorial practices; as well as questions about who owns cultural property and the repatriation of cultural objects. Bringing discussion of museums up to the current day, we will also look at the destruction of museums in times of conflict, theft, forgery, and trade in illegal antiquities. The learning outcomes for the course will be achieved through lectures, readings, online discussions, films, a critical provenance assignment, a take-home test, and a final exam (also take-home).

Land Acknowledgement:

I acknowledge that Western University is located on the traditional territories of the Anishinaabek, Haudenosaunee, Lūnaapéewak, and Chonnonton Nations, on lands connected with the London Township and Sombra Treaties of 1796 and the Dish with One Spoon Covenant Wampum. This land continues to be home to diverse Indigenous Peoples (First Nations, Métis and Inuit) whom we recognize as contemporary stewards of the land and vital contributors of our society.

Class Learning Outcomes

- Students will be able to demonstrate an understanding of the history and organization of museums.
- Students will learn how to describe and analyze different kinds of museums and different kinds of collections.
- Students will learn how to discuss and analyze the contentious histories of museums, and will be able to debate ethical issues pertinent to the field of museum studies.
- Students will learn appropriate language for the discussion of museums, culture, and art.
- Students will learn how to compare the principles of collecting, classification, and display from different historical periods and/or geographic areas.
- Students will be able to use critical thinking skills in evaluating museum exhibits and public programs.
- Students will be able to analyze how museum architecture conveys ideas.
- Students will learn how to participate in online discussions.

REQUIRED COURSE MATERIALS

OWL

OWL will be used for all aspects of this course. Please thoroughly familiarize yourself with the platform using the OWL Scavenger Hunt during Week One. Throughout the course, be sure to sign-in frequently to check for Announcements and updates.

Articles, Lectures, and Other Material

All video lectures, readings, and films (or external links to these), will be provided on OWL in the following locations:

- Video Lectures: “Weekly Lessons”
- Readings and Films: “Resources” and “Weekly Lessons”

To access our course page: Go to <https://owl.uwo.ca/portal>. Use your Western user name and password to sign in. Please be sure to check your browser and make sure everything is working at the beginning of the course. See the ITS technical assistance info on the above mentioned web site, and contact ITS for additional technical assistance. The ITS Support number is (519) 661-3800.

COURSE REQUIREMENTS/GRADE BREAKDOWN

Midterm Test (Take-Home): Due February 15, 2023 (will be released Feb. 10)	25%
Provenance Critical Analysis/Reflection: Due March 17, 2023	25%
Weekly Exit Tickets (Due weekly on Sunday at 11:59pm)	5%
Discussion Forum Posts (Due Weekly at 11:59pm)	15%
Final Exam (Take-Home): Due April 18 (will be released April 13)	30%

* In accordance with Western's Evaluation of Academic Performance, one week prior to the deadline for withdrawal from a course without academic penalty, you will receive assessment of your work for at least 15% of your final grade. The last day to drop a first-term half course is March 7.

Provenance Critical Analysis/Reflection

The assignment sheet for the Provenance Critical Analysis Assignment will be posted in the Assignments folder on Owl. I will also be uploading a video with further guidance for the assignment. You are responsible for following the directions of the assignments and submitting them on time.

Mid-term Test and Final Exam

The mid-term test and final exam may consist of short-answer and/or essay questions. Examination material will be drawn from lectures, films, forum discussions, and from course readings. The final exam is cumulative (includes the whole semester).

Online discussion forum

This is an online **asynchronous** course. Each weekly unit consists of posted materials for you to engage with independently (from week to week this may be a different combination of video lectures, films, assigned readings, or other material). The forum discussions are your opportunity to engage with the weekly material, ask questions and/or respond to your peer's ideas. You will be provided with guiding questions/prompts each week, but it is not mandatory that you use these – if there is something else you would rather comment on, please do.

You will be asked to make at least one initial Forum post by Sunday at 11:59 pm for each weekly unit. In addition, you will add at least one reply to a peer's post (replies may be added at any time throughout the course – only your first individual post must be completed by the deadline).

TAs will oversee online components of the course, which are divided into 'tutorial' sections. You can view which tutorial you belong to in the "Tutorial Groups" document posted under Resources in Owl. **Please be sure to post in your assigned tutorial group.**

Discussion Forum participation will be graded cumulatively at the end of the course. See introductory lecture for more detail.

Late Policy

Students are expected to complete all assignments on time. Assignments are considered late after 11:59 pm (midnight) the day they are due. Extensions, granted for valid reasons, must be negotiated BEFORE the assignments are due and in almost all cases must go through the

Academic Counseling office. Students seeking academic accommodation on medical grounds for any missed tests, exams, participation components and/or assignments must apply to the Academic Counseling office of their home Faculty and provide documentation. *Academic accommodation cannot be granted by the professor, TA, or the department.* Without accommodation, each assignment deadline (NOT including exams or discussion forum posts) comes with a 2-day grace period. After this, late assignments will be penalized 2% each day (including weekends).

No extensions will be granted for either exam except for documented exceptional circumstances, submitted through the Academic Counseling Office.

POLICIES

Student Conduct:

All students will conduct themselves in a manner that will be consistent with the maturity and academic integrity expected of university students. Student conduct shall be consistent with the general laws of the community and with University regulations. Students shall show regard and respect for the rights, safety, and property of all members of the University community and are expected to act in a responsible manner within the University and the community at large.

https://www.uwo.ca/univsec/pdf/academic_policies/appeals/code_of_conduct.pdf

Emails

- Assignments will not be accepted by email.
- Please clearly identify yourself and the course in any emails.
- The TAs and I will do our best to respond to emails within 48 hours, exclusive of weekends. Neither I, nor the TAs, should be expected to respond to emails from Friday at 4pm to Monday at 9am.
- Due to privacy regulations, grades cannot be discussed over email.

Prerequisite Checking:

You are responsible for ensuring that you have successfully completed all course prerequisites and that you have not taken an antirequisite course. Lack of prerequisites may not be used as basis of appeal. If you are not eligible for a course, you may be removed from it at any time, and you will receive no adjustment to your fees. These decisions cannot be appealed.

Plagiarism:

Plagiarism, which may be defined as “The act or an instance of copying or stealing another’s words or ideas and attributing them as one’s own,” will not be tolerated. (Citation excerpted from Black’s Law Dictionary, 1999, 7th ed., p. 1170). This includes presenting the visual or aural work of another creator as your own. Visual or Aural Plagiarism may involve both hand-based media such as drawing, painting, printmaking and sculpture, as well as digital

media such as photography, video and sound. It includes work subsequently manipulated or transferred between different media, as well as self-plagiarism – work submitted for assignments previously produced and graded for another course. Similar to textual plagiarism, all student work involving the visual or aural work of others must be appropriately cited/identified whether in print or orally. Failure to do so will lead to similar academic penalties as those identified in Western’s Academic Calendar.

Examples of Plagiarism:

1. Quoting verbatim or almost verbatim from any source, including all electronic sources, without acknowledgement;
2. Adopting someone else’s line of thought, argument, or supporting evidence without acknowledgement;
3. Submitting someone else’s work, in any form, without acknowledgement;
4. Knowingly representing as one’s own the idea of another;
5. Handing in the same work for more than one class

Plagiarism will not be tolerated. For further information concerning Western’s Plagiarism and Academic Offences (Scholastic Offences) policies see:

http://www.uwo.ca/univsec/pdf/academic_policies/appeals/scholastic_discipline_undergrad.pdf

All required papers may be subject to submission for textual similarity review to the commercial plagiarism-detection software under license to the University for the detection of plagiarism. All papers submitted for such checking will be included as source documents in the reference database for the purpose of detecting plagiarism of papers subsequently submitted to the system. Use of the service is subject to the licensing agreement, currently between The University of Western Ontario and Turnitin.com (<http://www.turnitin.com>).

Academic Sanctions:

In instances of non-payment of prescribed tuition and other fees, the University shall seal the academic record. When an academic record is sealed, the student will not be able to: a) view grades; b) register in future courses; c) receive transcripts or a degree diploma; d) obtain admission or readmission.

The above prohibitions shall be in force until such time as indebtedness to the University, including payment of fee for removal of the seal, has been cleared to the satisfaction of the University.

http://www.westerncalendar.uwo.ca/PolicyPages.cfm?PolicyCategoryID=1&Command=showCategory&Keywords=academic%20sanctions&SubHeadingID=169&SelectedCalendar=Live&ArchiveID=#SubHeading_169

Additional Course Material Request Policy

For online courses the material may be presented in a variety of ways at the instructor’s discretion. Requests for additional material can only be made in cases necessitating academic accommodation. If a student requires Academic Accommodation for the course material,

they can contact Western's Academic Support & Engagement department. <http://academicsupport.uwo.ca/>

Academic Consideration:

The University recognizes that a student's ability to meet their academic responsibilities may, on occasion, be impaired by medical illness. Illness may be acute (short term), or it may be chronic (long term), or chronic with acute episodes. The University further recognizes that medical situations are deeply personal and respects the need for privacy and confidentiality in these matters. However, in order to ensure fairness and consistency for all students, academic accommodation for work representing 10% or more of the student's overall grade in the course shall be granted only in those cases where there is documentation indicating that the student was seriously affected by illness and could not reasonably be expected to meet their academic responsibilities.

Documentation shall be submitted, as soon as possible, to the appropriate Dean's office (the Office of the Dean of the student's Faculty of registration/home Faculty) together with a request for relief specifying the nature of the accommodation being requested.

These documents will be retained in the student's file, and will be held in confidence in accordance with the University's Official Student Record Information Privacy Policy. Once the petition and supporting documents have been received and assessed, appropriate academic accommodation shall be determined by the Dean's Office in consultation with the student's instructor(s). Academic accommodation may include extension of deadlines, waiver of attendance requirements for classes/labs/tutorials, arranging Special Exams or Incompletes, re-weighting course requirements, or granting late withdrawals without academic penalty. Academic accommodation shall be granted only where the documentation indicates that the onset, duration and severity of the illness are such that the student could not reasonably be expected to complete their academic responsibilities. (Note – it will not be sufficient to provide documentation indicating simply that the student “was seen for a medical reason” or “was ill.”)

Whenever possible, students who require academic accommodation should provide notification and documentation in advance of due dates, examinations, etc. Students must follow up with their professors and their Academic Counselling office in a timely manner.

Documentation from Family Physicians/Nurse Practitioners and Walk-In Clinics A Western Student Medical Certificate (SMC) is required where a student is seeking academic accommodation. This documentation should be obtained at the time of the initial consultation with the physician/nurse practitioner or walk-in clinic. An SMC can be downloaded at

http://www.uwo.ca/univsec/pdf/academic_policies/appeals/medicalform.pdf.

At the time of illness, students should make an appointment with a physician/nurse practitioner at Student Health Services. During this appointment, request a Student Medical Certificate from the Physician/Nurse Practitioner.

Students should request that an SMC be filled out. Students may bring this form with them, or request alternative Emergency Department documentation. Documentation should be secured at the time of the initial visit to the Emergency Department. Where it is not possible for a student to have an SMC completed by the attending physician, the student must request documentation sufficient to demonstrate that their ability to meet their academic responsibilities was seriously affected.

Instructors are encouraged, in the first instance, to arrange participation requirements and multiple small assignments in such a way as to allow students some flexibility.

Accommodation by Instructor for work worth less than 10% of the overall grade in a course

A student seeking academic accommodation for any work worth less than 10% must contact the instructor or follow the appropriate Department or course specific instructions provided on the course outline. In arranging accommodation, instructors will use good judgment and ensure fair treatment for all students. Instructors must indicate on the course outline how they will be dealing with work worth less than 10% of the total course grade.

In particular, instructors must indicate whether medical documentation will be required for absences, late assignments or essays, missed tests, laboratory experiments or tutorials, etc. Where medical documentation is required, such documentation must be submitted by the student directly to the appropriate Faculty Dean's office, and it will be the Dean's office that will make the determination whether accommodation is warranted. Given the University's Official Student Record Information Privacy Policy, instructors may not collect medical documentation.

In all cases where accommodation is being sought for work totalling 10% or more of the final grade in a course, students will be directed to the appropriate Faculty Dean's office. Students who have been denied accommodation by an instructor may appeal this decision to the appropriate Faculty Dean's office but will be required to present appropriate documentation.

Attendance:

Under university regulations, if someone misses more than 15% of their classes (15% is equivalent to missing 8 hours of Lecture and/or Studio Lab, due to absence or lateness, or a combination of both, per semester) without written corroboration for health or bereavement, students can be debarred from participation in final evaluations and/or assignments.

Note that if a student is consistently absent from a 3-hour class for 1 hour, they will exceed the 15% cutoff and be debarred; assignments may stop being accepted and such assignments will receive a mark of 0 (zero)

Religious Accommodation

Students should consult the University's list of recognized religious holidays, and should give reasonable notice in writing, prior to the holiday, to the Instructor and an Academic

Counsellor if their course requirements will be affected by a religious observance. Additional information is given in the [Western Multicultural Calendar](#).

Electronic Devices:

During Exams: Unless you have medical accommodations that require you to do so, or explicit permission from the instructor of the course, you may not use any electronic devices during any tests, quizzes, midterms, examinations, or other in-class evaluations.

During Lectures and Tutorials: Although you are welcome to use a computer during lecture and tutorial periods, you are expected to use the computer for scholastic purposes only, and refrain from engaging in any activities that may distract other students from learning. From time to time, your professor may ask the class to turn off all computers, to facilitate learning or discussion of the material presented in class. **Unless explicitly noted otherwise, you may not make audio or video recordings of lectures – nor may you edit, re-use, distribute, or re-broadcast any of the material posted to the course website.**

Normal Building Access (September 1st to April 30th) (Subject to change):

The John Labatt Visual Arts Centre will be closed at 10:00pm each night Monday to Friday. There will be no after-hour access for undergraduate students. The Centre is open weekends 12:00pm-5:00pm unless otherwise posted; access by side entrances only. Students should be prepared to vacate the building promptly at 10:00pm and 5:00pm. You must also sign-in with the building monitors when working in the workshop areas outside of regular office hours.

Permission re: Promotion:

You grant permission for Western University to reproduce your name, information describing your artwork, representations of your work and any other information you have provided for the purpose of display, promotion and publicity either now or in the future.

By installing your artwork in the John Labatt Visual Arts Centre, you grant Western University an irrevocable, perpetual, royalty-free world-wide licence to photograph your artwork and use such photograph(s) for the promotion of your artwork and/or Western University, including, without limitation, advertising, display, editorial, packaging, promotion, television, social media, the Department of Visual Arts website, flickr, Twitter, Instagram etc.). Students wishing to not have their work photographed should not exhibit it in the Visual Arts Centre, Artlab Gallery or Cohen Commons. As the area is open to the public, students, faculty, staff and other visitors will not be prohibited from photographing your artwork while on exhibit at the John Labatt Visual Arts Centre.

You otherwise retain all ownership in your artwork.

Artwork Installation Liability Release:

You understand that the area where your artwork will be hanging or displayed is unsupervised and is in a part of the building that may be open to the public, day and evening, whether or not the building is open. Western University accepts no responsibility for damage to, or loss of, artwork at any time while on display or while being transported to or from the John Labatt Visual Arts Centre. By displaying your artwork in the John Labatt Visual Arts Centre, you accept all risk of loss or damage to your artwork. Western University does not provide insurance for the artwork on exhibition. If you wish to insure artwork, it is your responsibility to do so.

Removal:

Western University reserves the right to dispose of artwork not picked up by April 15th of each year.

Support Services:

There are various support services around campus and these include, but are not limited to:

Registrarial Services <http://www.registrar.uwo.ca>

Student Support Services <https://student.uwo.ca/psp/heprdweb/?cmd=login>

Services provided by the USC <http://westernusc.ca/services/>

Academic Support and Engagement <http://www.sdc.uwo.ca/>

Students who are in emotional/mental distress should refer to Health and Wellness <http://www.uwo.ca/uwocom/mentalhealth/> for a complete list of options about how to obtain help. Immediate help in the event of a crisis can be had by phoning 519.661.3030 (during class hours) or 519.433.2023 after class hours and on weekends.

Health and Wellness:

Western offers a variety of counselling services and several mental health resources for students. If you or a friend are feeling overwhelmed, confused or unsure of your mental health state, please don't ignore it. There are steps you can take to help yourself or help others. Western provides several on-campus health-related services to help engage in healthy living while pursuing your degree. For example, to support physical activity, all students receive membership in Western's Campus Recreation Centre. Further information regarding health and wellness-related services available to students may be found at <http://www.health.uwo.ca/>.

If you are in emotional or mental distress should refer to Mental Health Support at Western <http://www.uwo.ca/uwocom/mentalhealth/> for a complete list of options about how to obtain help.

Gender Neutral Bathrooms:

Middlesex College does not have specifically gender-neutral bathrooms. There are two gender neutral bathrooms in the JLVAC. One is located in the Artlab and is open only

during Artlab hours. A second single stall gender neutral bathroom can be found on the third floor of the JLVAC. Here is the full list of inclusive washrooms at UWO:

http://www.uwo.ca/equity/doc/inclusive_washrooms.pdf.

Please contact the Administrative Officer, Meghan Edmiston (meghan.edmiston@uwo.ca), for card access to the elevator and stairs if you are in need of the 3rd floor gender neutral/accessible washroom for the academic year.

Multiple choice tests/exams:

Computer-marked multiple-choice tests and/or exams may be subject to submission for similarity review by software that will check for unusual coincidences in answer patterns that may indicate cheating

VISUAL ARTS Undergraduate Grading Guidelines - Art History

90-100 (Outstanding, A+) The writing shows significant originality and exhibits a high degree of critical engagement. Sophisticated synthesis and analysis of the theoretical and conceptual dimensions of the topic are demonstrated. Mastery of complex material and ideas is immediately evident. The topic is treated with sensitivity and subtlety of thought. The quality of the background research is exemplary. Regarding research, all major secondary sources pertaining to the topic have been consulted and proper citation has been used.

80-89 (Excellent, A) The writing shows originality and exhibits a high degree of critical engagement. Writing is probing through the use of comments and/or questions, and is clearly focused and logically organized. The quality of writing immediately engages the reader. Mastery of complex materials and ideas is demonstrated. The writing is of appropriate length, and demonstrates mastery of techniques so that results are meaningful and not simplistic. Regarding research, a majority of the secondary sources pertaining to the topic have been consulted and proper citation has been used.

75-79 (Very Good, B+) The writing shows above average analysis, critical thinking and independent thought. Written claims are supported by ample evidence and the components of the topic are well-researched and presented. The work is addressed in reasonable depth and/or breadth and covers material appropriate to the course. Written analysis is organized around focal points and the development of the argument is easily followed. The writer demonstrates an above average ability to write in an intelligible style and to condense material meaningfully and with a concern for priorities of that material. Regarding research, a representative selection of secondary sources pertaining to the topic has been consulted and proper citation has been used.

70-74 (Good, B) The writing shows a satisfactory attempt at analysis and critical thinking. Written claims are supported by reasonable evidence. The work is addressed in some depth and/or breadth, with references to the appropriate literature and course material. Written analysis is organized around focal points. The text is generally well written and well argued. Regarding research, a somewhat limited selection of secondary sources pertaining to the topic has been consulted and proper citation has been used.

60-69 (Competent, C) The writing demonstrates adequate engagement with the topic. The writing is on topic and is a reasonable response to material covered in the course, but goes no further. Written facts are stated accurately; the quality of writing is sufficiently intelligible with enough elaboration and enough connections made between ideas to permit a reader to understand the point of the text. Regarding research, an insufficient number of secondary sources pertaining to the topic has been consulted but proper citation has been used.

50-59 (Marginal, D) The writing shows less than adequate engagement with the topic and with the material covered by the course. The writing is a less than adequate summary of sources and/or is considerably off-topic. Written facts are stated inaccurately or ambiguously; the writing style is difficult to follow; there is insufficient elaboration to permit reader's comprehension of relations among ideas; little judgment is shown in selecting detail for inclusion in the text. Regarding research, few secondary sources pertaining to the topic have been consulted; proper citation may or may not have been used.

Below 50 (Unacceptable, F) The writing demonstrates a failure to comprehend the topic. Written material is disorganized and unintelligible. The work clearly does not meet the minimal requirements of the assignment. Regarding research, secondary sources pertaining to the topic have not been consulted and proper citation has not been used.