

# CAUBO

## BEST PRACTICES

### Violence Prevention and Emergency Preparedness

Elgin Austen - Western  
Mike Markicevic - York

# A safe campus community because:







# Employer Responsibilities

- Provide a safe workplace environment
- Ensure notification on any potential or actual danger
- Ensure effective supervision

# **Critical Infrastructure and Life Safety**



# BEST PRACTICE PROTOCOLS

- Violence Prevention
- Emergency Management
- Communications & Technology
- Education and Training

# Violence Prevention

1. Formal program
2. Multi-disciplinary team
3. Written policy
4. Risk assessments
5. Services for at risk students and employees
6. Disciplinary measures
7. Incident follow-up to investigations
8. Counselling resources, mental health/ medical staff
9. Review program annually, at a minimum



# CPTED Reviews

(Crime Prevention Through Environmental Design)

- Qualified personnel
- Environmental analysis
- Traffic patterns and personal safety concerns
- Locks, keys, cards, cameras, alarms, signage
- Communications & education initiatives

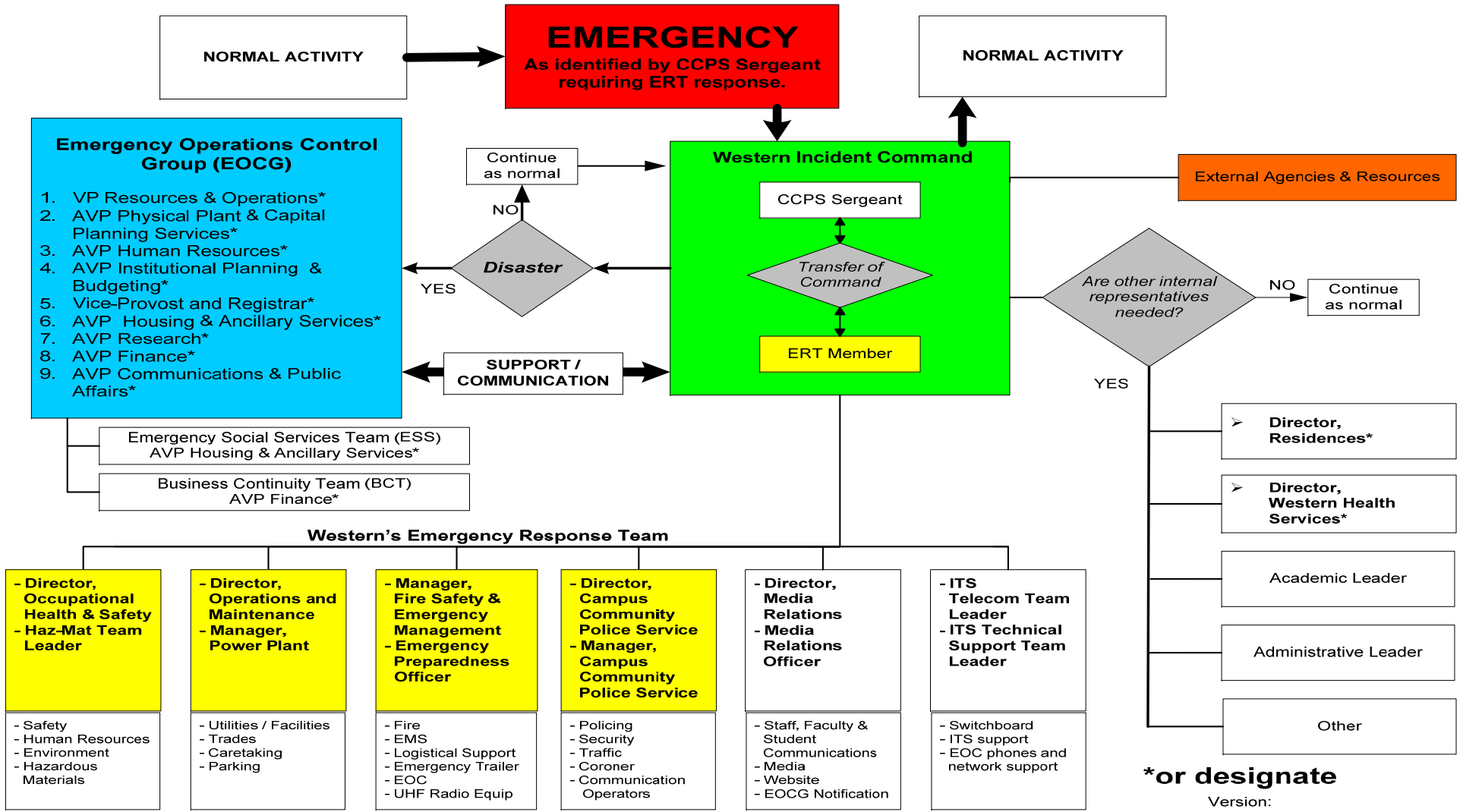
# Emergency Response

- Do we have a plan?
- Do we have trained personnel?
- Do we have an integrated structure?
- Are we prepared?

# Incident Command

- All hazard emergency management
- Prevention, mitigation, response, recovery
- Collaborative – Tactical response
- Consistent with Police and Fire Emergency
- Unified Command & Integrated Communications
- Established chain of command & deployment

# Western's Emergency Response Process









# Emergency Management

1. Establish an emergency plan that provides consistency
2. Develop an emergency management infrastructure
3. Analyze the chain of command, reporting structure and investigative resources for HIRA
4. Conduct risk assessments - qualified personnel - CPTED
5. Corporate plan for mitigation, response, recovery and resumption
6. Emergency management consistency with province

# **Emergency Management (cont'd)**

7. Incident Command & Unified Command structure
8. Plan versatile enough for any emergency
9. Logistics support and include an EOC
10. Business Continuity & Emergency Social Services
11. Critical incident stress management & EAP counselling



# Communications & Technology

1. Stay current with technology developments
2. Multi-layered communications structure
3. CPA and Campus Police/Security activate emergency messaging
4. Integrate communications with local police and other emergency services

# Education and Training

1. Violence prevention education for all campus to understand resources & to identify, report, prevent, and respond to violence and potential violence
2. At risk personal safety trumps confidentiality
3. BEM training (EMO or equivalent) for ERT, EOCG
4. Realistic Emergency Plan training exercises with ERT, EOCG, BCT and ESS integrated with local police and emergency services





**Stay Safe**