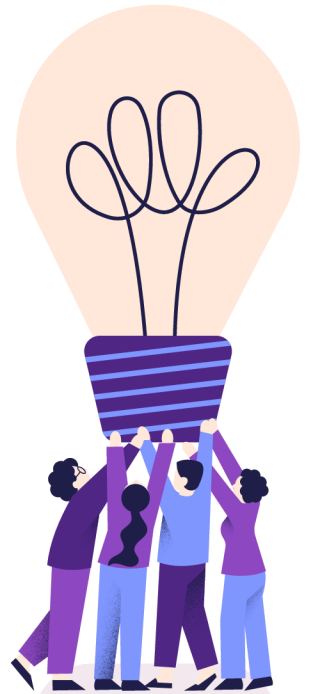


School of Occupational Therapy

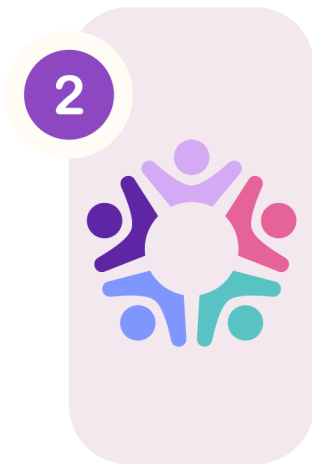
# RESEARCH PILLARS

## 2024

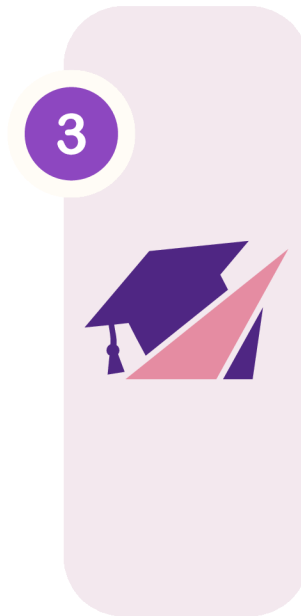
Harnessing the transformative power of  
occupation to collaboratively...



Optimize  
health &  
wellbeing



Build diverse &  
inclusive  
communities



Evolve Occupational  
Therapy practice &  
education



Advance social  
& occupational  
justice

# STRATEGIC RESEARCH PRIORITIES

## 2024 – 2029

### 1 Increase Support for, and Acquisition of, Research Funding

- 1.1 Improve administrative support for research funding acquisition and growth
- 1.2 Secure specialized support for grant applications
- 1.3 Enhance our grant success repository
- 1.4 Nominate faculty for research awards and research chair opportunities

### 2 Advocate and Collaborate to Improve Research Infrastructure

- 2.1 Secure a research chair position in our school
- 2.2 Work with the REB to align applications with participatory action methodology and transformative research approaches
- 2.3 Continue to advocate for improved supports for the TRAC process

### 3 Foster Innovative, Diverse, and Responsive Programs of Research for Health and Social Impact

- 3.1 Identify and track traditional and non-traditional metrics to measure impact of research
- 3.2 Identify and share relevant grant opportunities
- 3.3 Develop research synergies in the school and across faculties to support research outputs and mentorship of junior faculty members

**4****Foster Supportive Research Environments to Train and Mentor Undergraduate and Graduate Students, and Post-Doctoral Scholars**

- 4.1 Grow our complement of HQP to increase research capacity in the school
- 4.2 Build infrastructure to ensure the success of all students
- 4.3 Attract strong undergraduate students
- 4.4 Integrate MScOT students in school's research activities

**5****Develop and Enhance Partnerships**

- 5.1 Explore national and international research partnership opportunities
- 5.2 Track and demonstrate the value and impacts of partnerships
- 5.3 Develop the Research to Practice series to build connections with, and be responsive to, the local and national occupational therapy community
- 5.4 Identify and connect with potential occupational therapy community partners

**6****Develop Diverse Contextually Relevant Knowledge Mobilization (KMb) Activities**

- 6.1 Identify and integrate metrics for measuring impact of KMb activities
- 6.2 Support mentorship, training, and resources in KMb
- 6.3 Identify KMb grants and opportunities
- 6.4 Work with FHS communications to develop and enact a purposeful and strategic communications plan using diverse communication strategies
- 6.5 Establish expertise and faculty members as the 'go-to' people in specific areas aligned with our research pillars