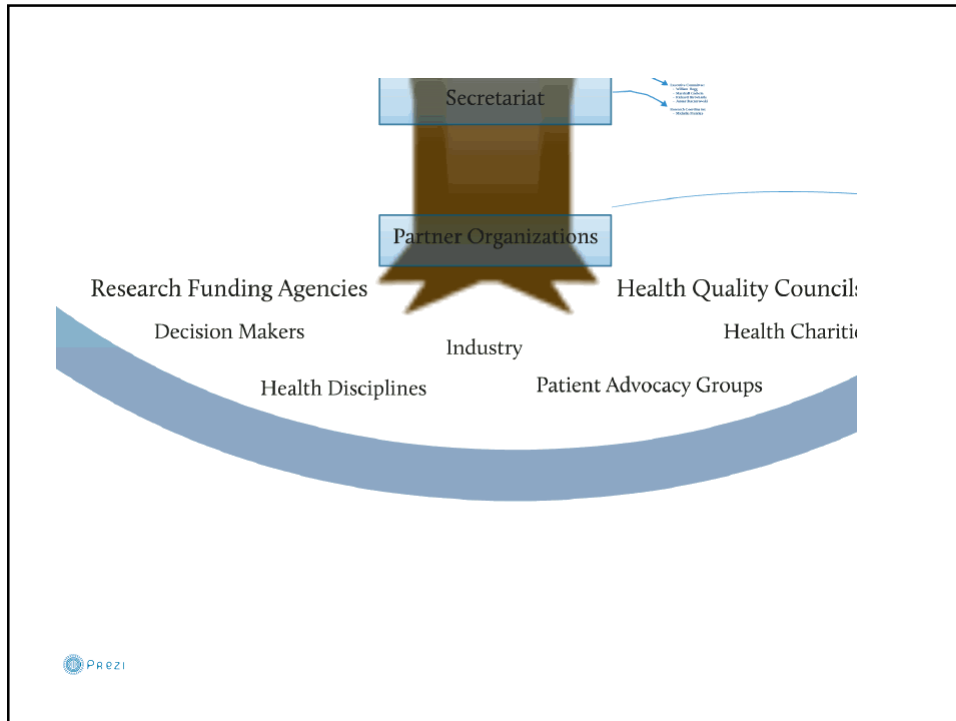




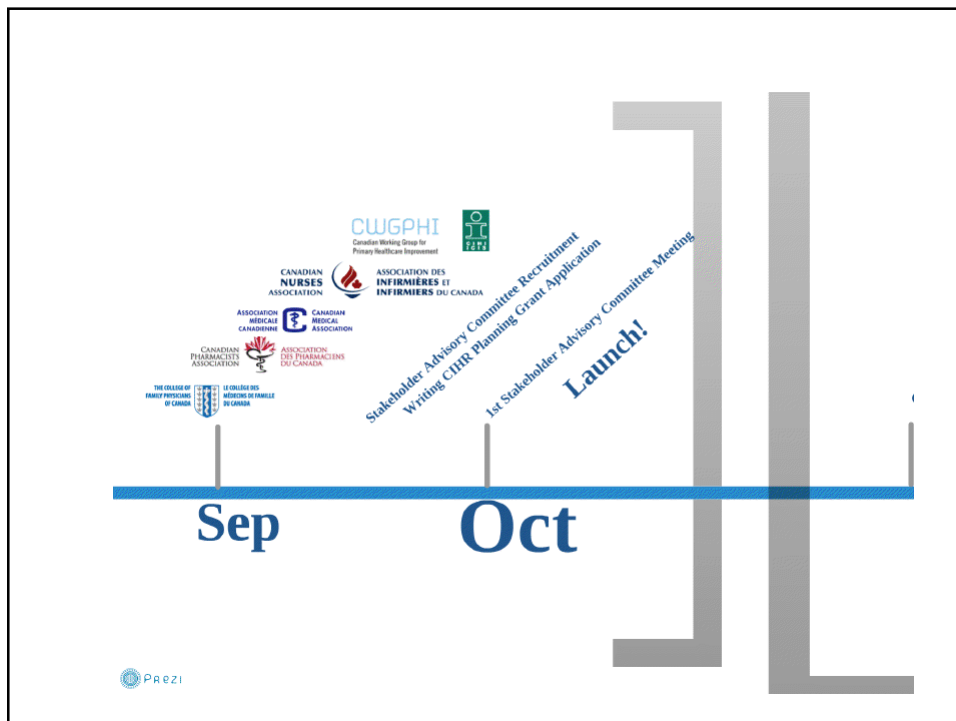
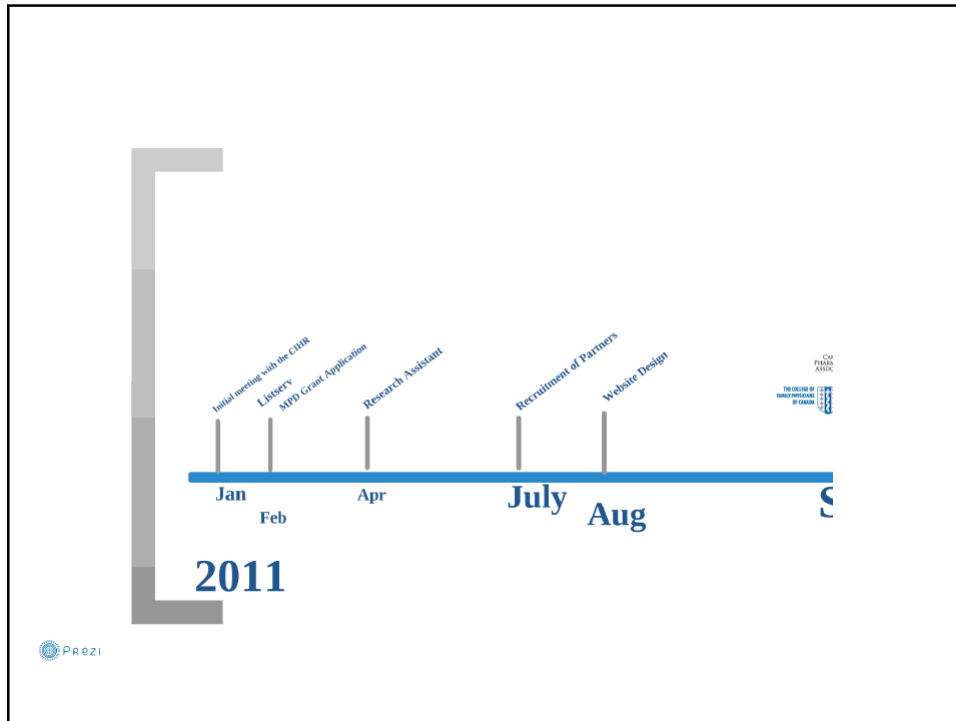
CPHCRN: Who are we?

The Canadian Primary Health Care Research Network (CPHCRN) is a newly established pan-Canadian research network of researchers from all Primary Health Care (PHC) research disciplines and experts from all stakeholder groups interested in advancing PHC to improve the health of Canadians.

The diagram below the text shows a stylized tree with a brown trunk and branches, and leaves in shades of orange and red. The tree is surrounded by several overlapping circles in shades of blue and red. A small box labeled 'Scientific Advisory Committee' is positioned at the base of the tree. In the bottom left corner of the slide, there is a small logo for 'Prezi'.

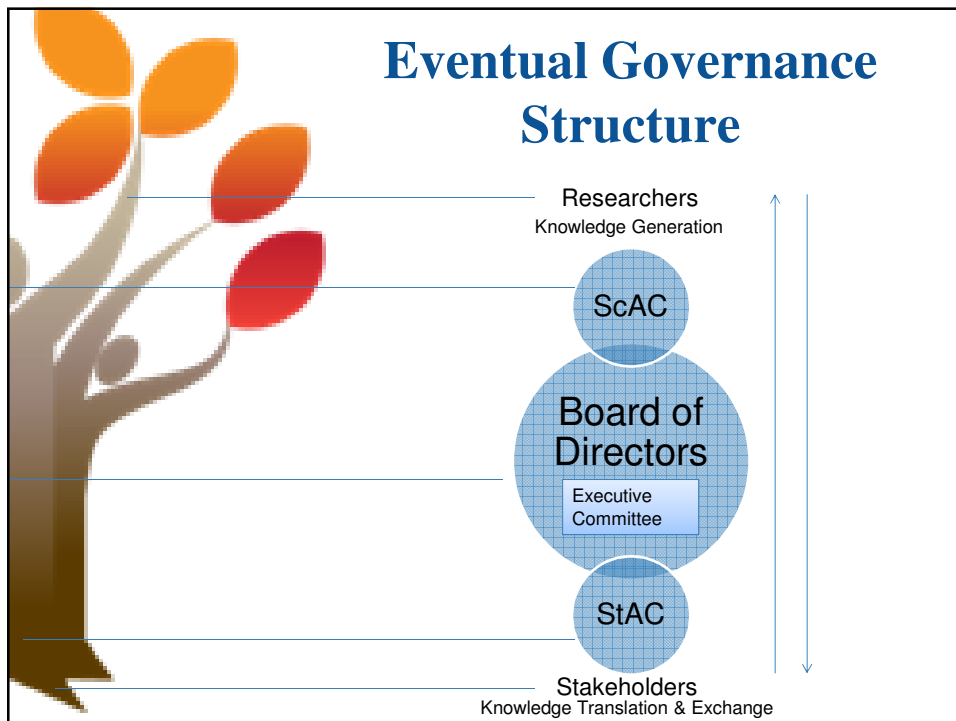



How we got started...



What are we about, now?

- Coordinating PHC research efforts
- Conducting transformative PHC research





Stakeholder Advisory Committee

- Élisabeth Bruyère Research Institute
- The Canadian Counselling and Psychotherapy Association
 - The Canadian Institute for Health Information
 - The Canadian Medical Association
 - The Canadian Nurses Association
 - The Canadian Pharmacists Association
 - The Canadian Physiotherapy Association
- The Canadian Working Group for PHC Improvement
 - The College of Family Physicians of Canada
 - The Patients' Association of Canada
 - TUTOR-PHC
 - The Saskatchewan Health Quality Council
- University of Ottawa, Dept. of Family Medicine

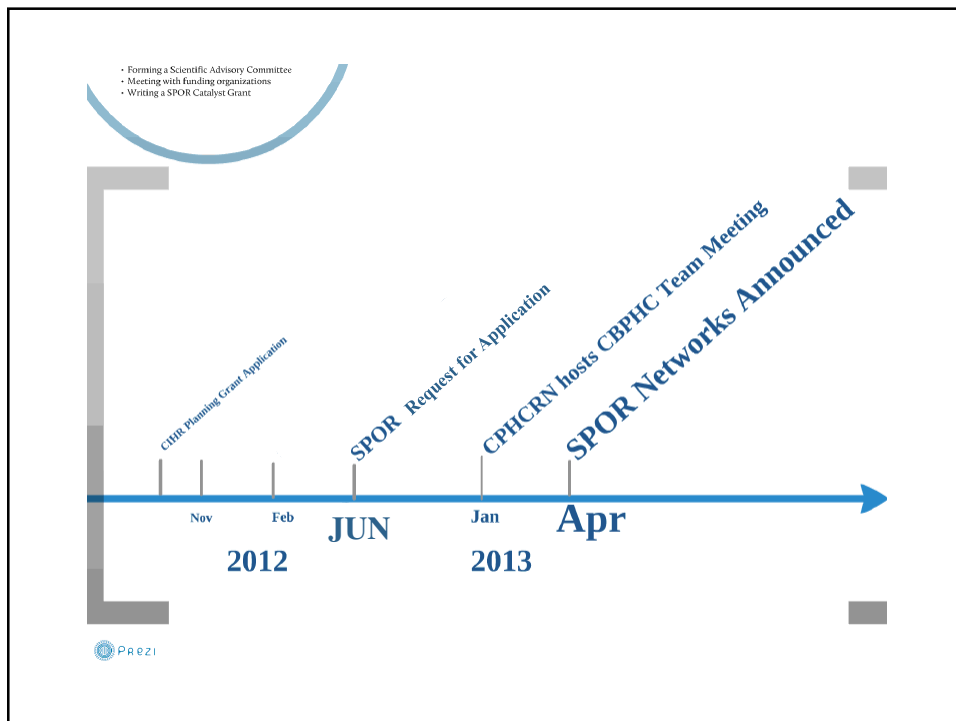



Executive Committee:

- William Hogg
- Marshall Godwin
- Richard Birtwhistle
- Janusz Kaczorowski
 - Lisa Dolovich
 - Sabrina Wong

Next Steps

- Researchers registering on the website's searchable database
- Input on the network discussion document
- Establishing partnerships within all PHC disciplines
- Forming a Scientific Advisory Committee
- Meeting with funding organizations
- Writing a SPOR Letter of Intent



CBPHC Team Grant Requirement



- to support the formation of a comprehensive CIHR Patient-Oriented Research Network in CBPHC

CBPHC SPOR Network Requirement



- to support the successful CBPHC teams



Questions/Comments?

Research Coordinator: Michelle Prentice
(mprentice@cphcrn-rcrssp.ca)