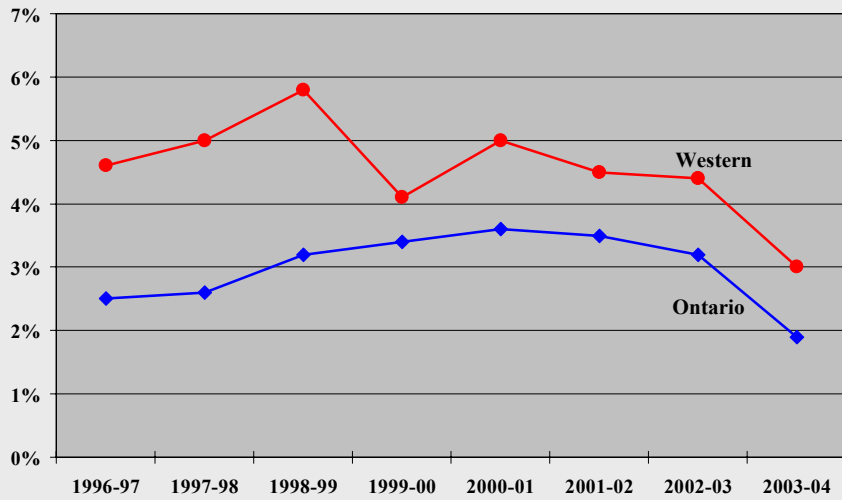


Figure 3

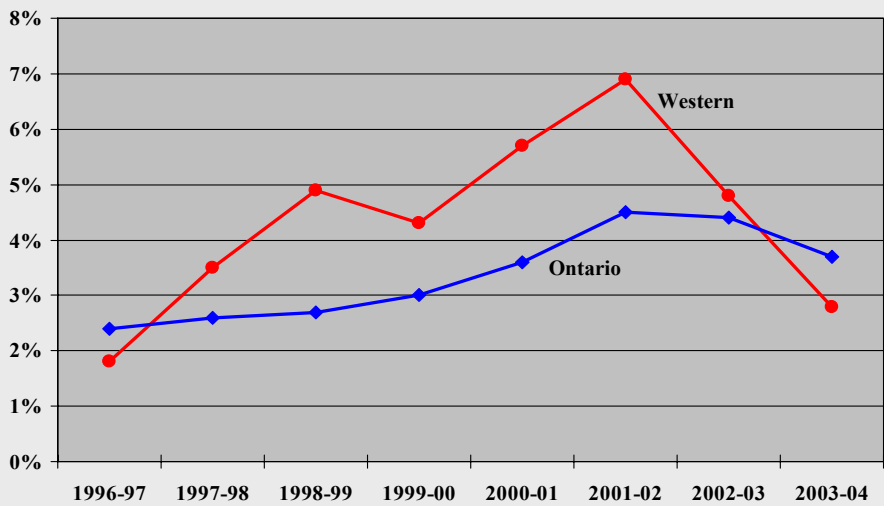
Proportion of First-Year Students from Other Canadian Provinces



Source: Council of Ontario Universities and The University of Western Ontario

Figure 4

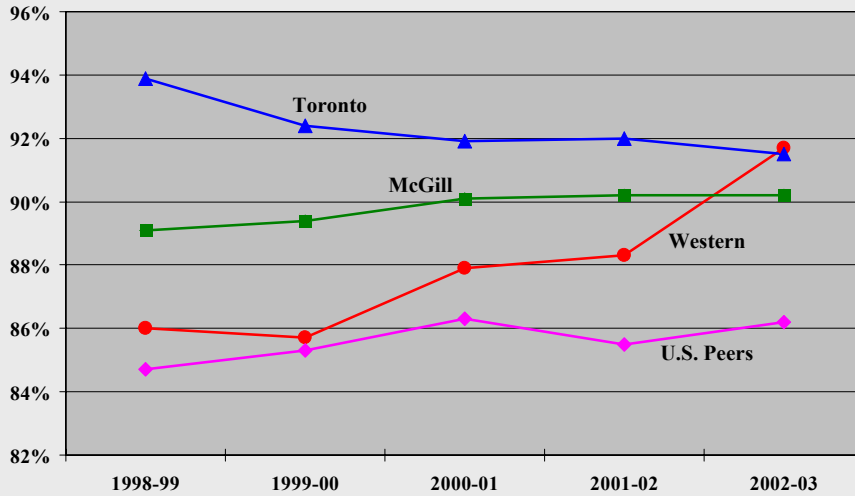
Proportion of First-Year Students from Other Countries



Source: Council of Ontario Universities and The University of Western Ontario

Figure 5

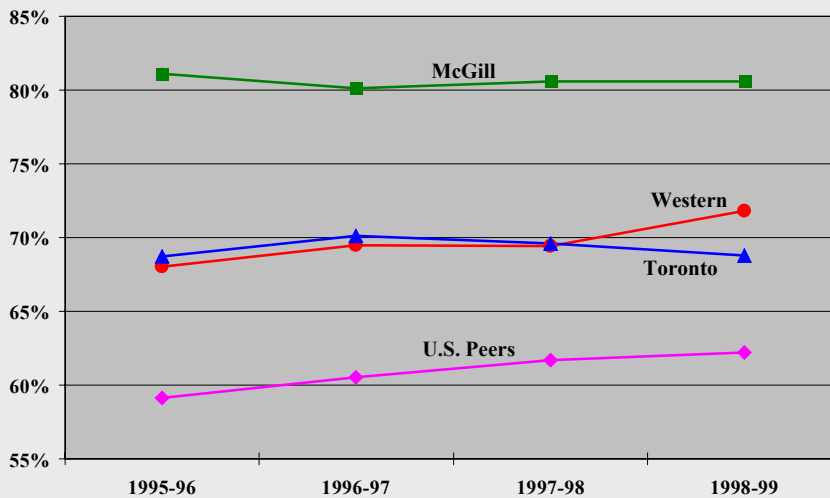
Year 1 to Year 2 Retention Rates 1998-99 to 2002-03 Entering Cohorts



Source: Consortium for Student Retention Data Exchange. U.S. Peers include the University of Arizona, University of Iowa, Michigan State University, University of North Carolina at Chapel Hill, and Ohio State University

Figure 6

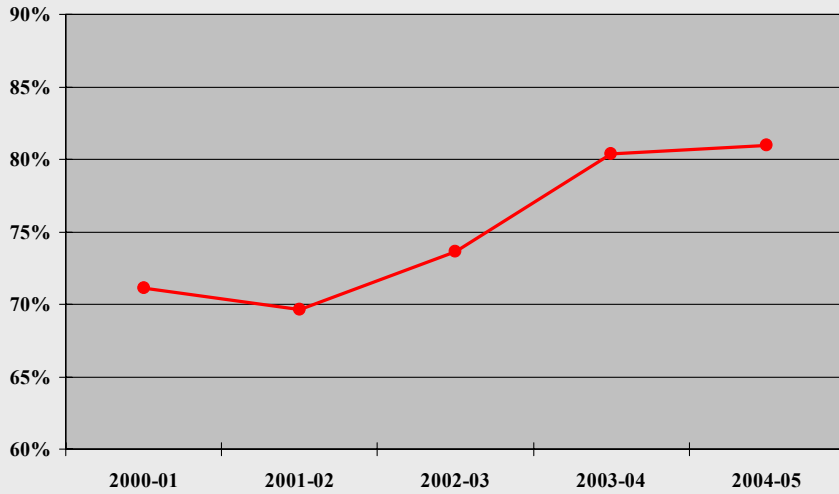
Undergraduate Student Graduation Rates 1995-96 to 1998-99 Entering Cohorts Five Years After Entry



Source: Consortium for Student Retention Data Exchange. U.S. Peers include the University of Arizona, University of Iowa, Michigan State University, University of North Carolina at Chapel Hill, and Ohio State University

Figure 7

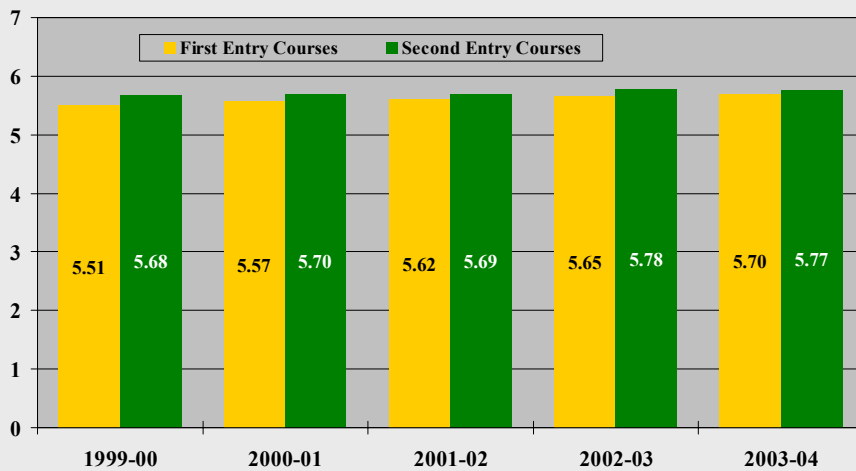
Percent of Full-Time First-Year Students in Residence at Western



Source: The University of Western Ontario

Figure 8

Western's Instructor and Course Evaluations Ratings of Effectiveness of the Instructor

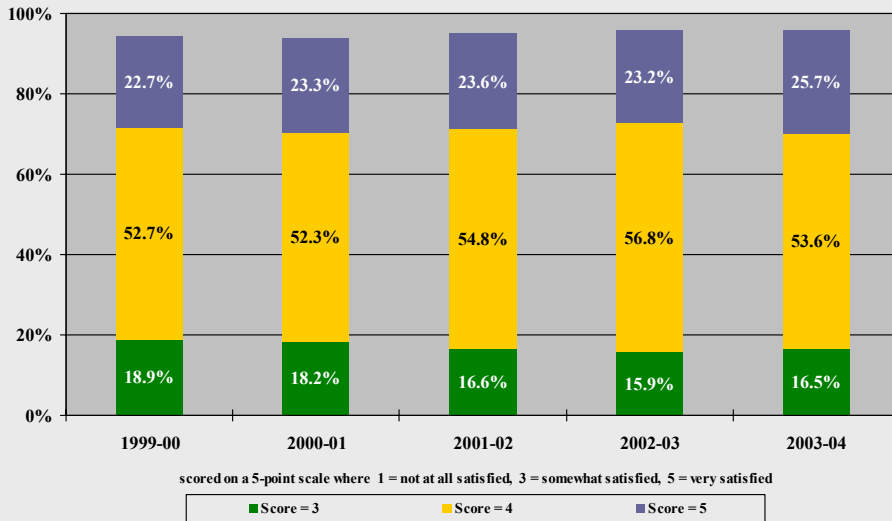


Grading Scale: 7-Outstanding; 6-Very Good; 5-Good; 4-Satisfactory; 3-Borderline; 2-Unsatisfactory; 1-Very Poor

Source: The University of Western Ontario

Figure 9

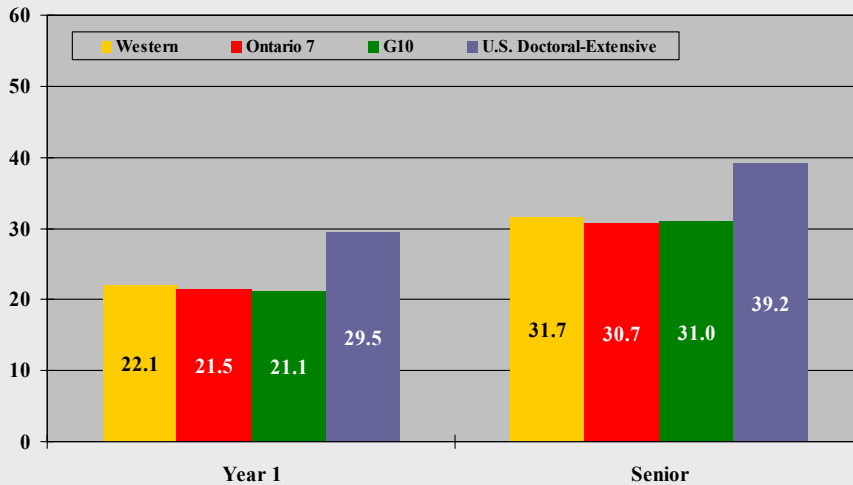
Overall Satisfaction with Education Received Percentage of Responses Between 3 and 5 (on a 5 point scale)



Source: The University of Western Ontario

Figure 10

2004 NSSE Benchmarks Student-Faculty Interaction

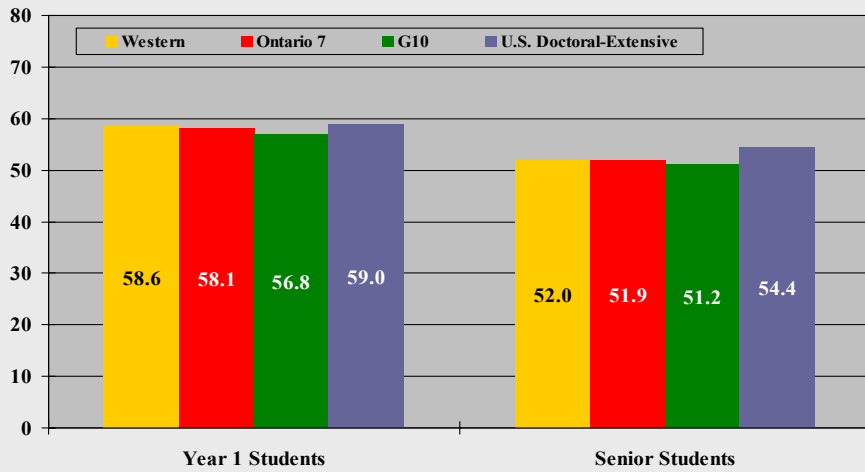


Students learn firsthand how experts think about and solve practical problems by interacting with faculty members inside and outside the classroom. As a result, their instructors become role models, mentors, and guides for continuous life-long learning.

Source: The National Survey of Student Engagement

Figure 11

2004 NSSE Benchmarks Supportive Campus Environment

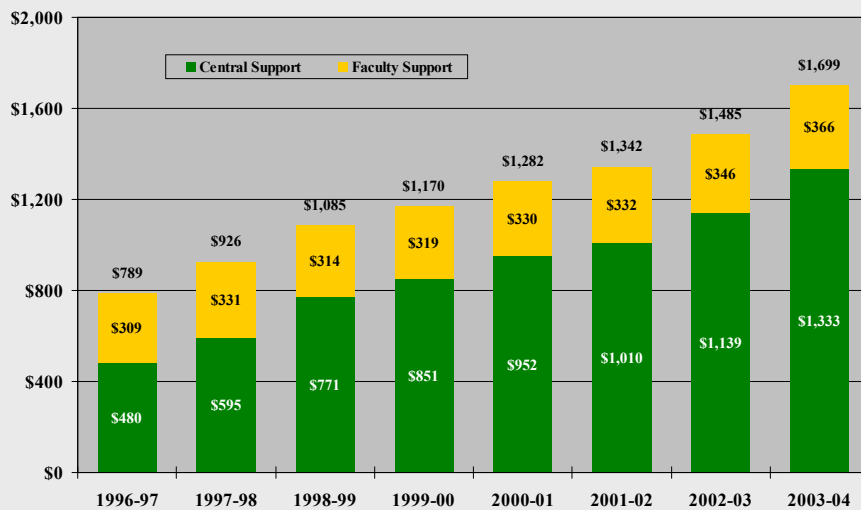


Students perform better and are more satisfied at institutions that are committed to their success and cultivate positive working and social relations among different groups on campus.

Source: The National Survey of Student Engagement

Figure 12

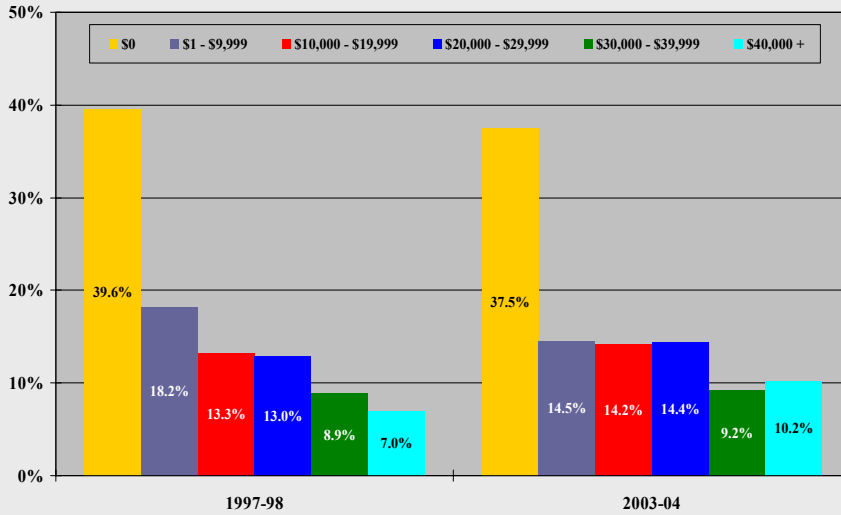
Student Aid Funding from the Operating Budget per FTE Student at Western



Source: The University of Western Ontario

Figure 13

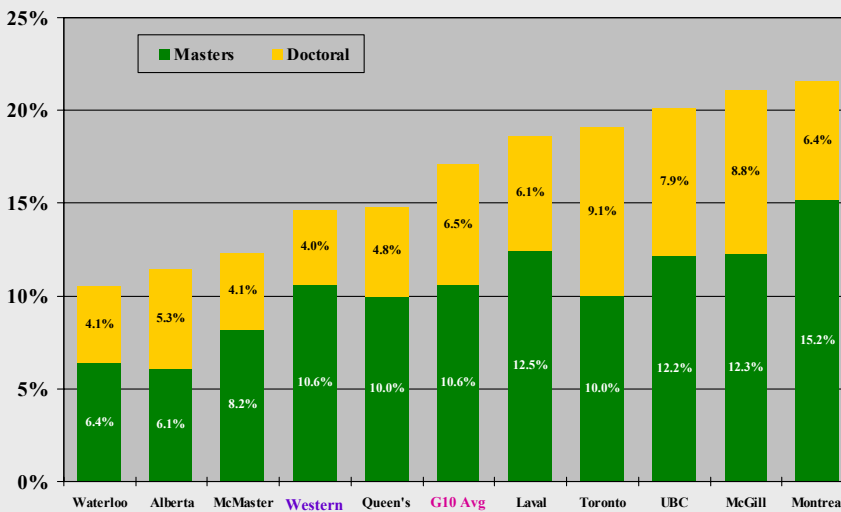
Education-Related Debt at Graduation Western Graduates from Undergraduate Programs



Source: The University of Western Ontario

Figure 14

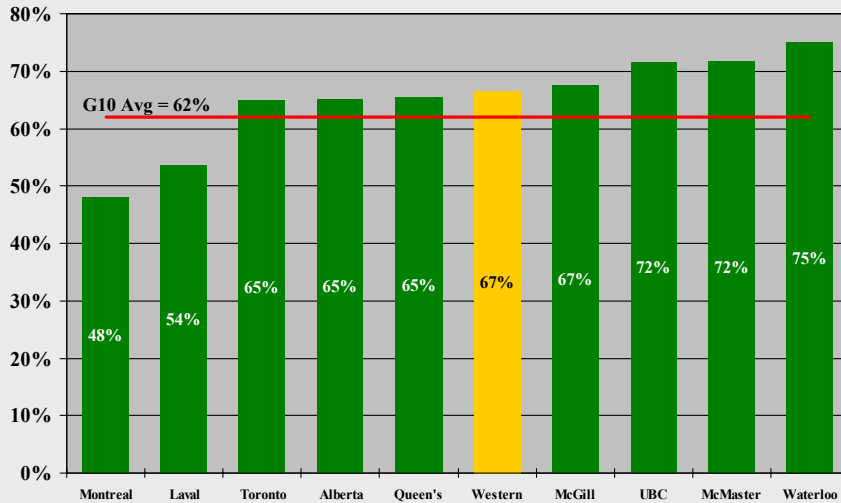
Full-Time Masters and Doctoral Students as a Proportion of Total Full-Time Student Enrolment 2002-03



Source: G10 Data Exchange

Figure 15

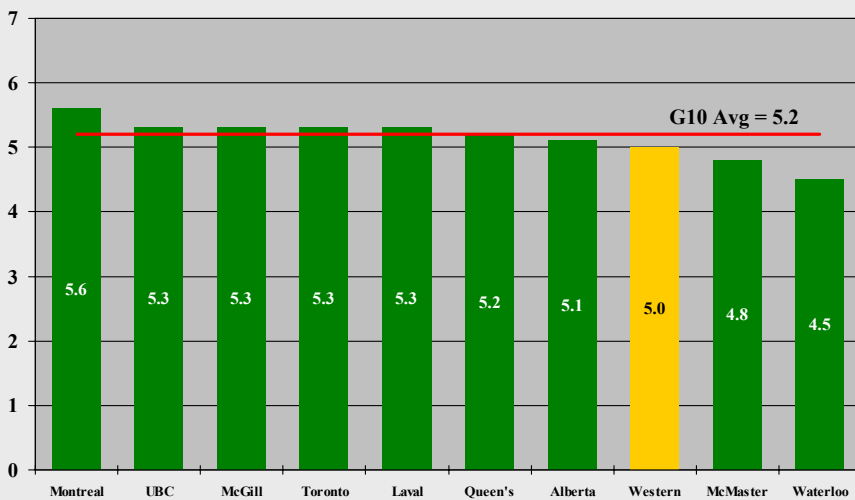
Doctoral Degree Completion Rates 1992, 1993, and 1994 Entering Cohorts – All Disciplines at Nine Years After Entry



Source: G10 Data Exchange; UBC data include only the 1992 and 1994 cohorts

Figure 16

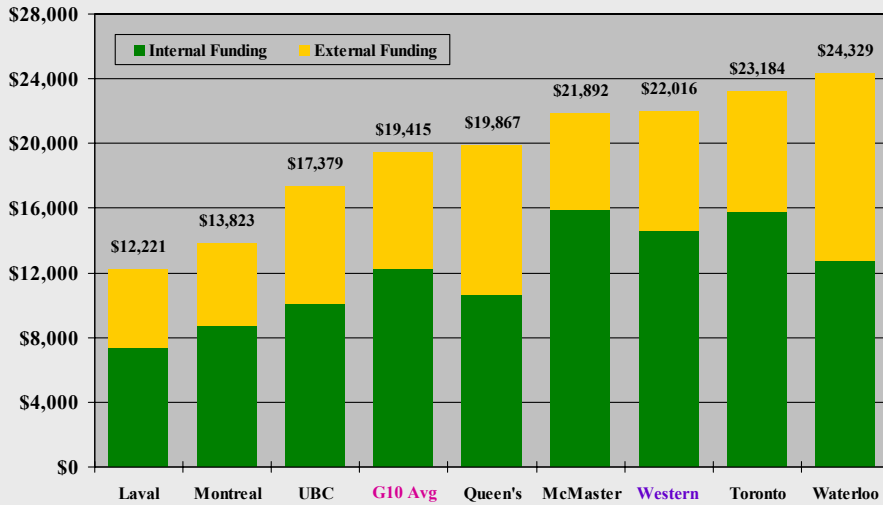
Average Number of Years to Doctoral Degree Completion 1992, 1993, and 1994 Entering Cohorts – All Disciplines



Source: G10 Data Exchange; UBC data include only the 1992 and 1994 cohorts

Figure 17

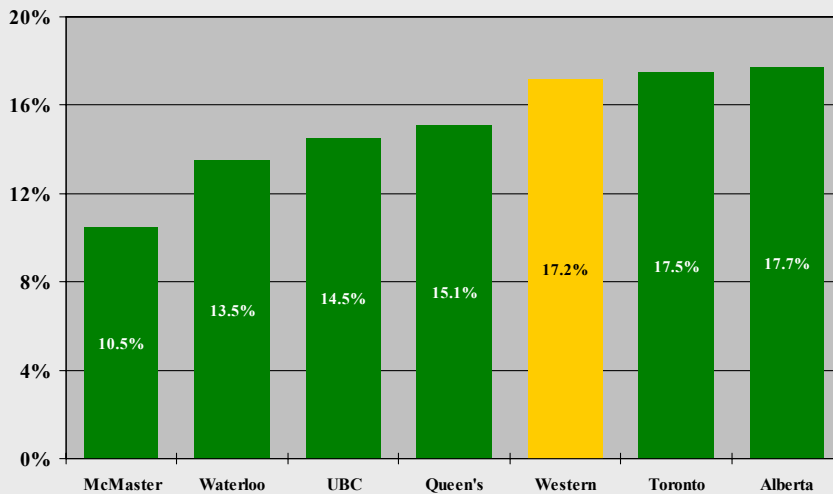
Average Financial Support per Doctoral Student in Arts and Science Programs 2002-03



Source: G10 Data Exchange; McGill and Alberta did not participate

Figure 18

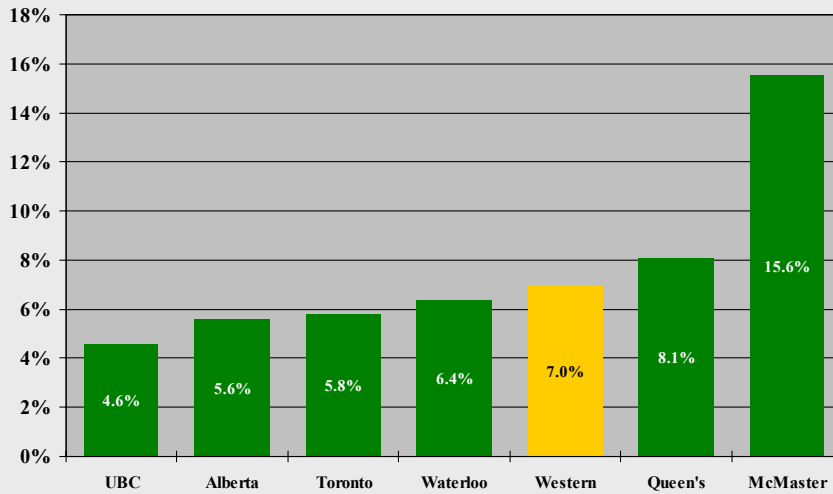
Graduate Student Fellowships Natural Sciences and Engineering Research Council of Canada 3-Year Average Awards as a % of Full-Time Eligible Graduate Students



Source: Awards data from The Natural Sciences and Engineering Research Council of Canada; Enrolments from G10DE - enrolments not available for McGill, Montreal, Laval; awards are from 2001-02 to 2003-04, enrolments are from 2003-04

Figure 19

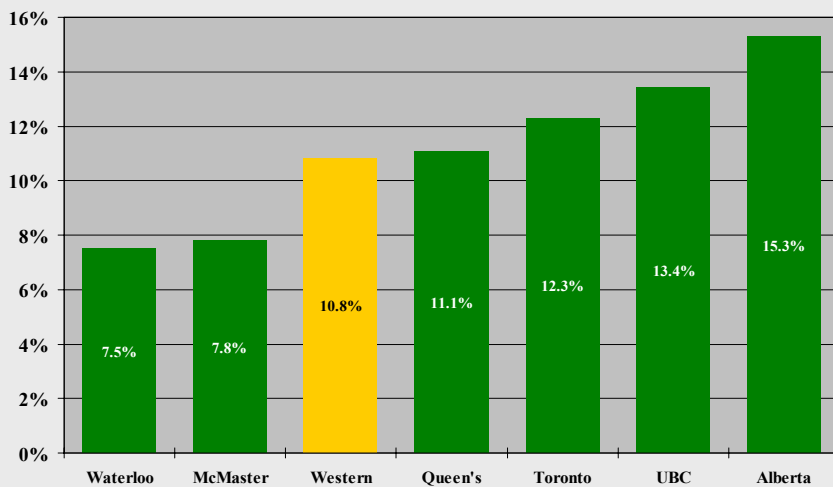
Graduate Student Fellowships
Social Sciences and Humanities Research Council of Canada
3-Year Average Awards as a % of Full-Time Eligible Graduate Students



Source: Awards data from The Social Sciences and Humanities Research Council of Canada; Enrolments from G10DE - not available for McGill, Montreal, Laval; awards are from 2001-02 to 2003-04, enrolments are from 2003-04 and exclude Business and Education

Figure 20

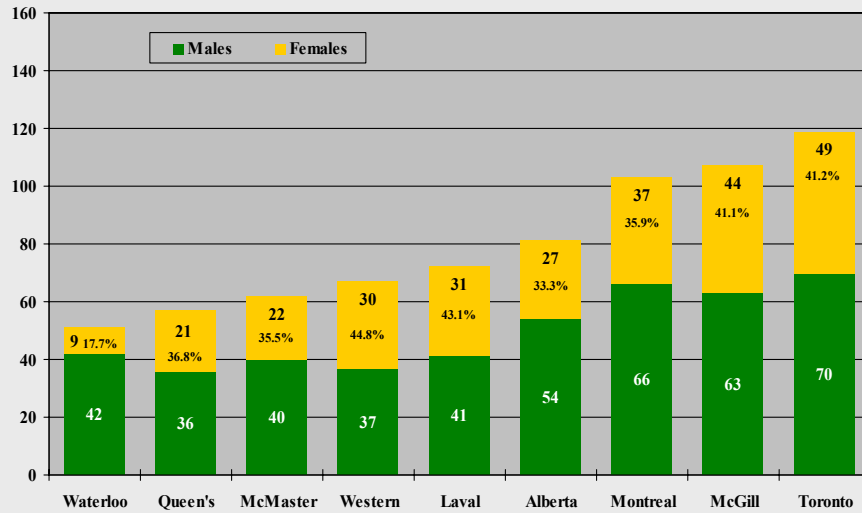
Graduate Student Fellowships
Canadian Institutes of Health Research
3-Year Average Awards as a % of Full-Time Eligible Graduate Students



Source: Awards data from The Canadian Institutes of Health Research; Enrolments from G10DE - enrolments not available for McGill, Montreal, Laval; awards are from 2001-02 to 2003-04, enrolments are from 2003-04 and exclude Therapy programs

Figure 21

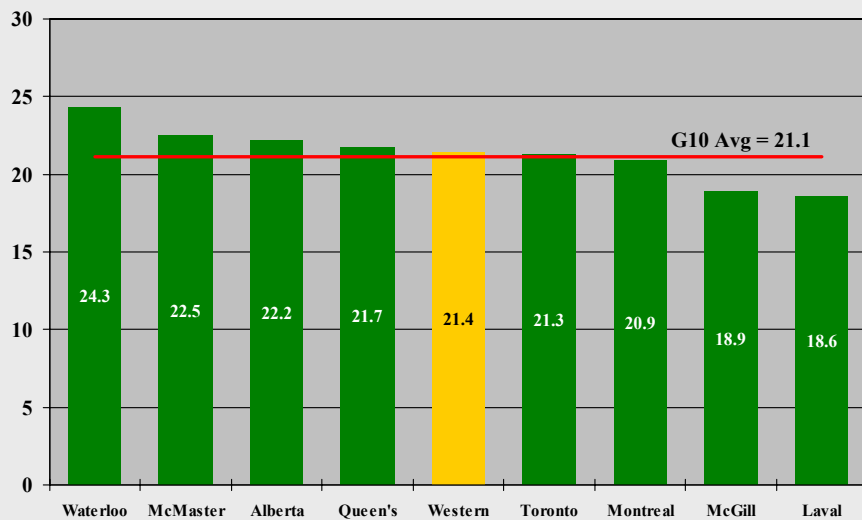
New Tenured and Probationary Appointments by Gender 2003-04



Source: G10 Data Exchange; data from Statistics Canada UCASS submissions; excludes UBC

Figure 22

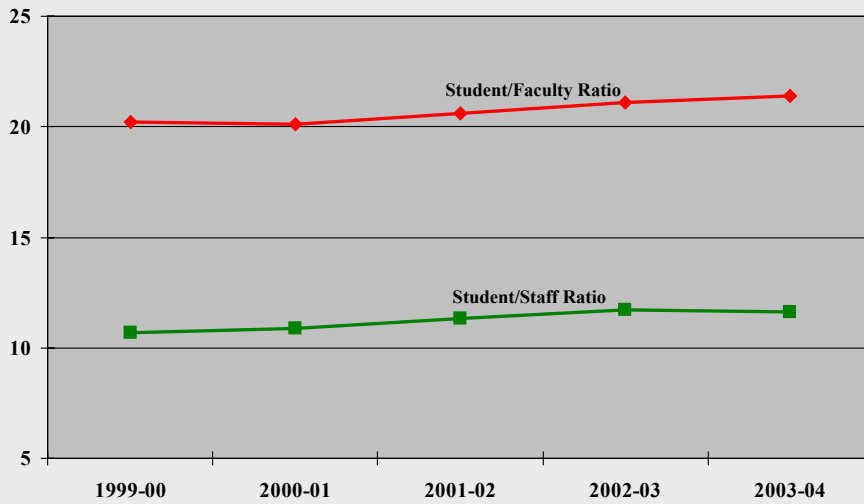
Full-Time Student to Full-Time Faculty Ratio 2002-03



Source: G10 Data Exchange; excludes UBC

Figure 23

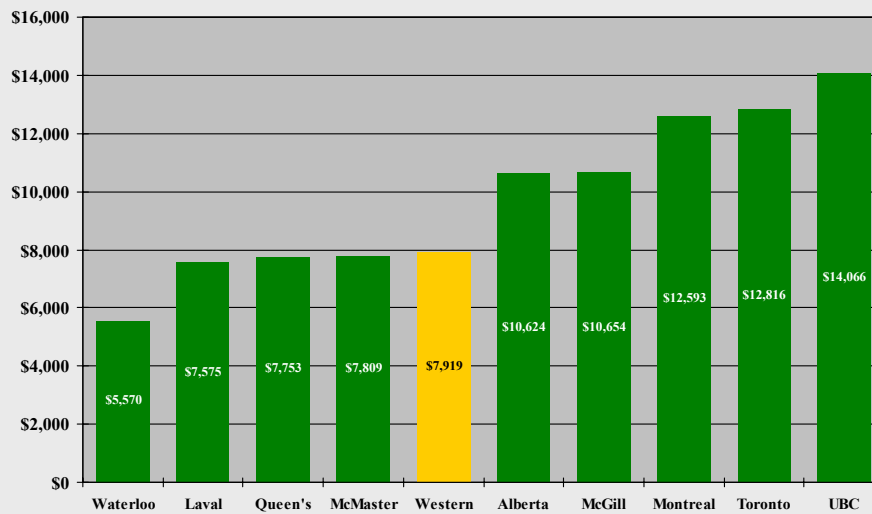
Full-Time Student to Full-Time Faculty and Staff Ratios at Western



Source: The University of Western Ontario

Figure 24

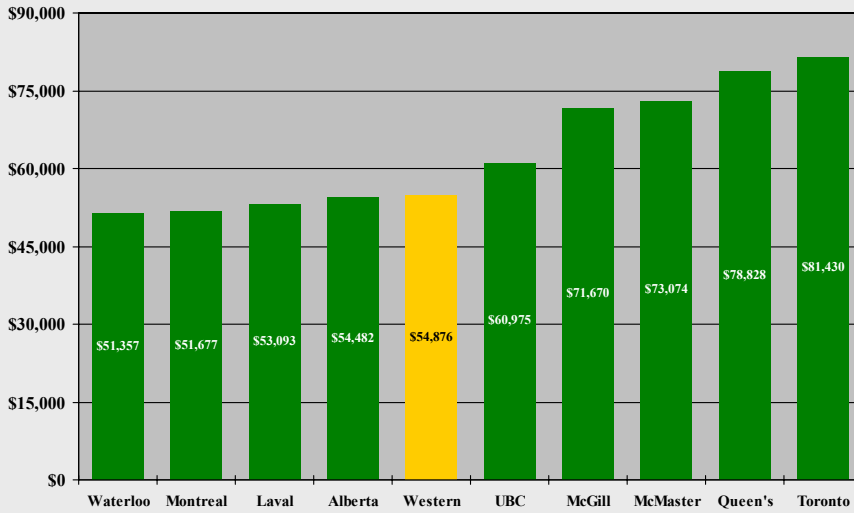
SSHRC Awards Funding per SSHRC-Eligible Tenure Track Faculty Member 2003-04



Source: Social Sciences and Humanities Research Council of Canada; excludes funding for CRCs, NCEs, Communications and Training. Faculty data from Statistics Canada and include only those eligible for SSHRC funding.

Figure 25

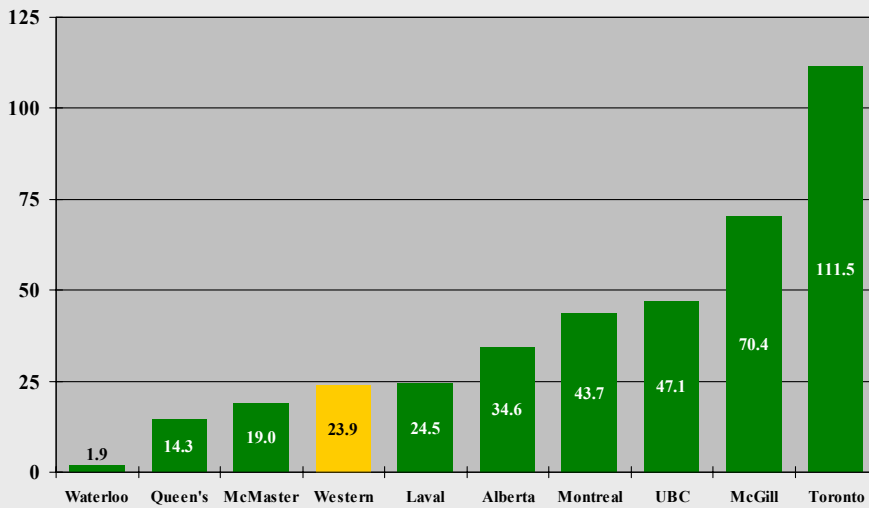
NSERC Awards Funding per NSERC-Eligible Tenure Track Faculty Member 2003-04



Source: Natural Sciences and Engineering Research Council of Canada; excludes funding for CRCs, NCEs, and Training. Faculty data from Statistics Canada and include only those eligible for NSERC funding.

Figure 26

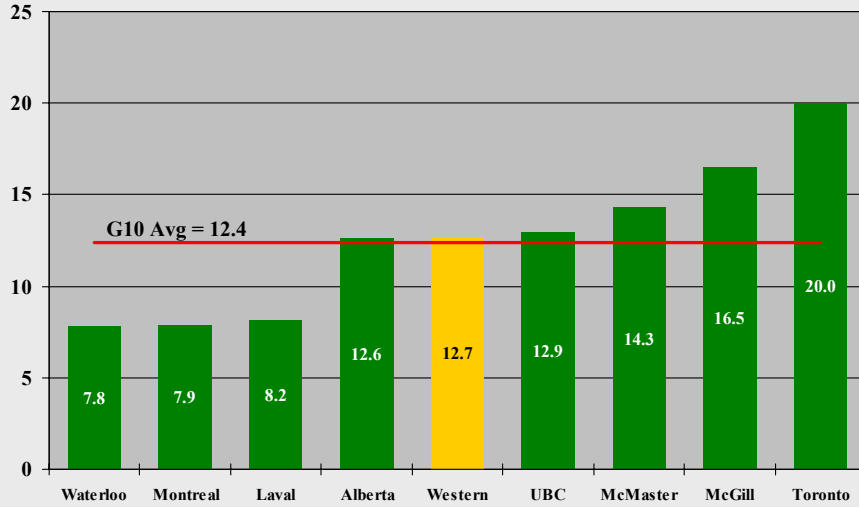
CIHR Awards Total Faculty Funding (\$M) 2003-04



Source: The Canadian Institutes of Health Research.

Figure 27

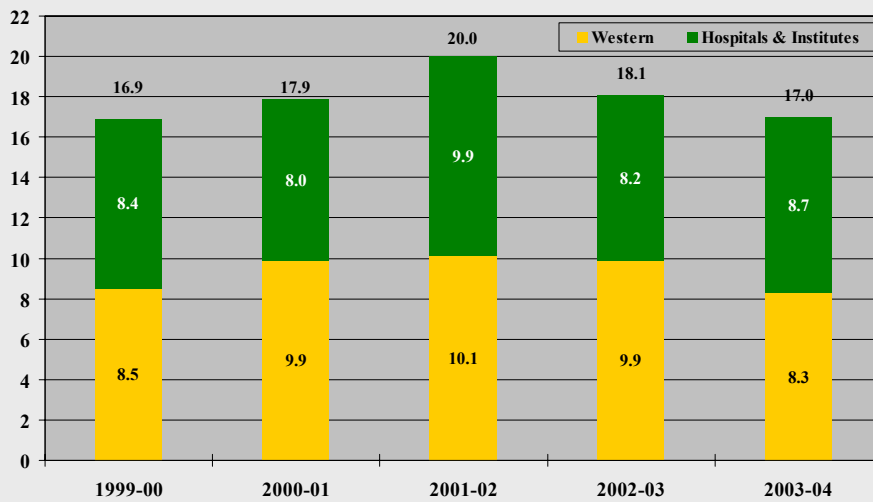
Natural Sciences and Engineering Publications per NSERC-Eligible Faculty by University 1999 to 2003



Source: Publications from OST and are totals for the period 1999 to 2003 excluding those categorized as Clinical Medicine; NSERC-eligible faculty from G10 Data Exchange and is from 2003-04

Figure 28

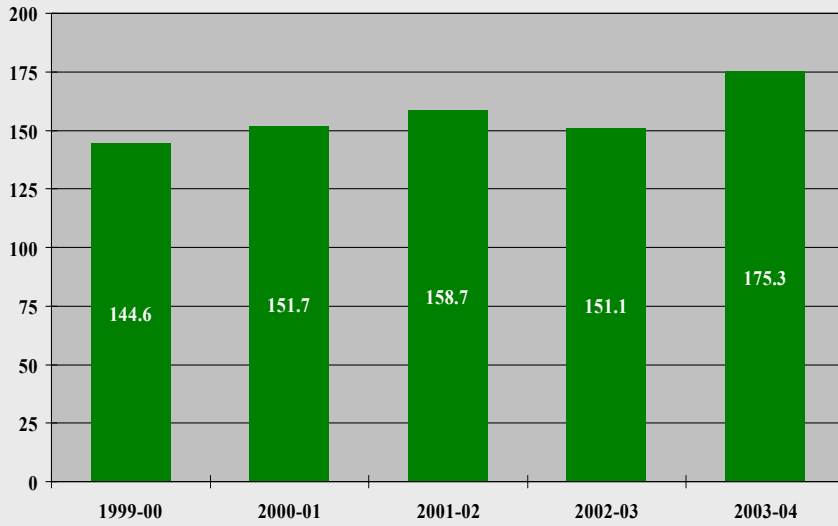
Western's Non-Government Contract Research Revenue (\$M)



Source: The University of Western Ontario

Figure 29

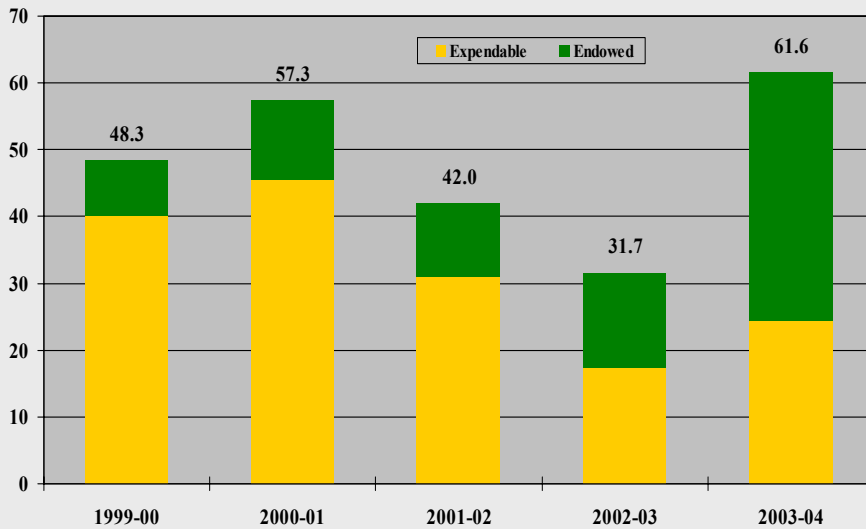
Western's Total Endowment Value (\$M)



Source: The University of Western Ontario; all data as of April 30th; includes Foundation Western

Figure 30

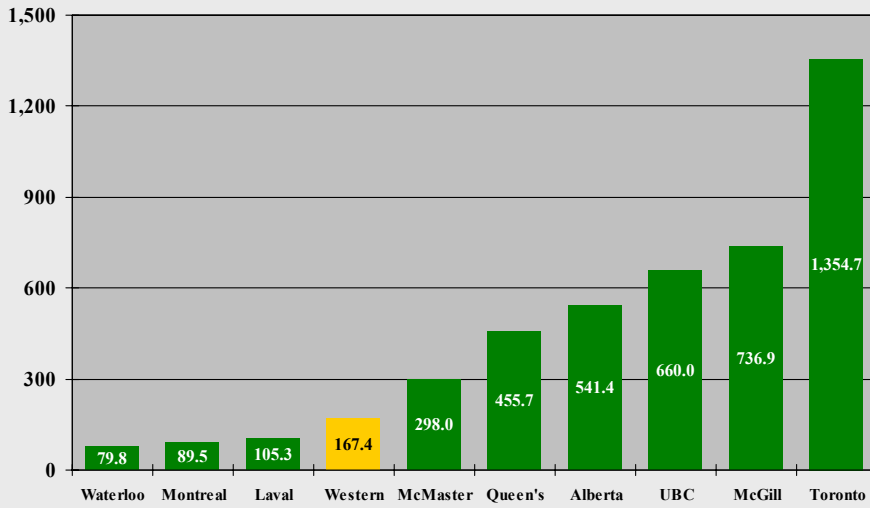
Total Gifts to Western (\$M)



Source: The University of Western Ontario; all data as of April 30th

Figure 31

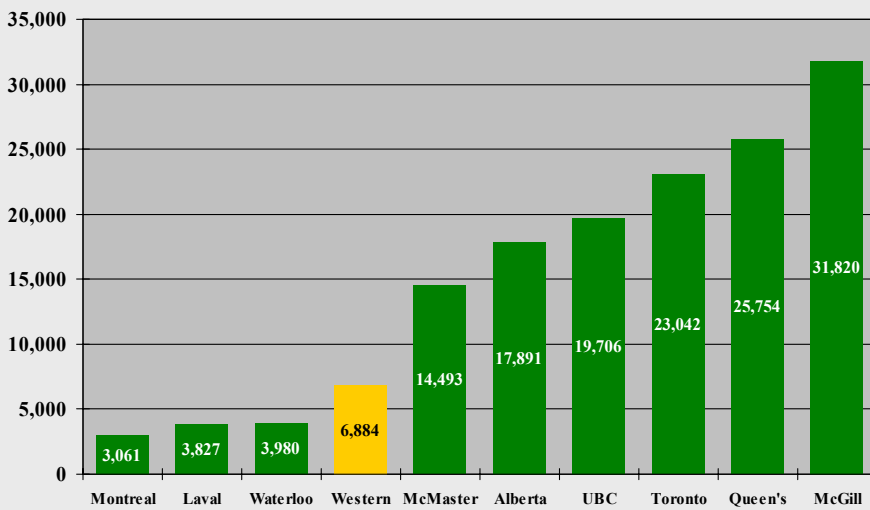
Total Market Value of Endowments (\$M) 2003



Source: CAUBO University Investment Survey (December 31, 2003)

Figure 32

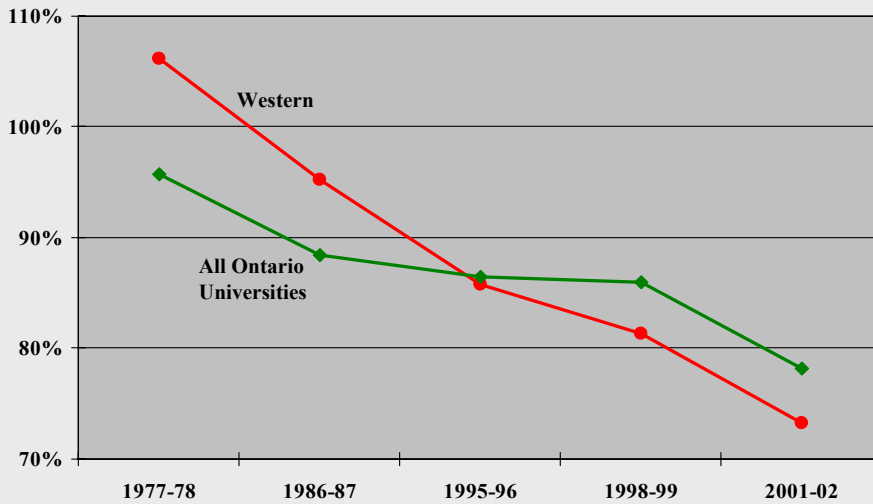
Endowment Assets per FTE Student 2003



Source: CAUBO University Investment Survey (December 31, 2003)

Figure 33

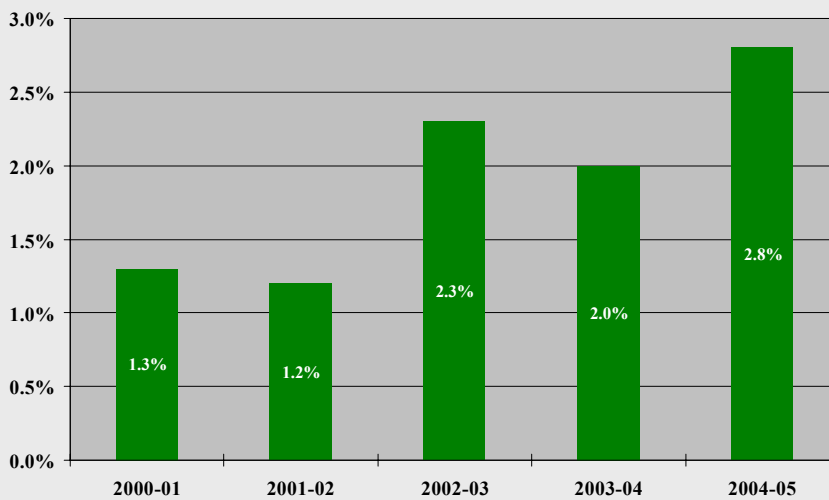
Ratio of Actual Space to Formula Space



Source: Council of Ontario Universities

Figure 34

Western's Maintenance, Modernization, and Infrastructure Expenditures as a Percentage of Building Replacement Value



Source: The University of Western Ontario; Replacement Value includes Non-Residential Buildings, Utilities and Infrastructure