



Notice of Service Interruption/Area Closure
Western University
Facilities Management
Client Services 519-661-3304 (fmhelp@uwo.ca)

Submit by E-mail
 Print Form

Date of Interruption/Closure: Time(s):

Building(s) Affected: #1 #2
 #3 #4
 Areas/Rooms Affected Alternate Route/Service:

Service to be interrupted: #1 #2
 #3 #4
 Description/Reason for Project:

Requester: Date of Request:

Supervising Tradesperson: Unit:
 Trade Manager: Unit: Date:

Contractor: Phone #:
 Coordinator/Project Manager: Phone #: Date:

Reviewed by Trade Manager(s)/Shop(s) Affected:

Name: <input type="text" value="Plumber / Fitter Shop"/>	Date: <input type="text" value="Nov 25, 2016"/>	Name: <input type="text" value="WES Control"/>	Date: <input type="text"/>
Signature/Stamp: <input type="text" value="P Dearing"/>		Signature/Stamp: REVIEWED <i>By Jesse Atkinson (jatin48@uwo.ca) at 3:28 pm, Nov 25, 2016</i>	
Name: <input type="text"/>	Date: <input type="text"/>	Principal Occupants:	
Signature/Stamp: <input type="text"/>		Name: <input type="text"/>	Ext. <input type="text"/> Date: <input type="text"/>
Name: <input type="text"/>	Date: <input type="text"/>	Name: <input type="text"/>	Ext. <input type="text"/> Date: <input type="text"/>
Signature/Stamp: <input type="text"/>		Name: <input type="text"/>	Ext. <input type="text"/> Date: <input type="text"/>
Name: <input type="text"/>	Date: <input type="text"/>	Approval to Proceed: <input type="text"/> Date: <input type="text"/>	
Signature/Stamp: <input type="text"/>		APPROVED <i>By Andrew Merucci (amerucci@uwo.ca) at 8:41 am, Nov 28, 2016</i>	

Notes:

UNIVERSITY COMMUNITY CENTRE - BASEMENT FLOOR EAST

Power Supply

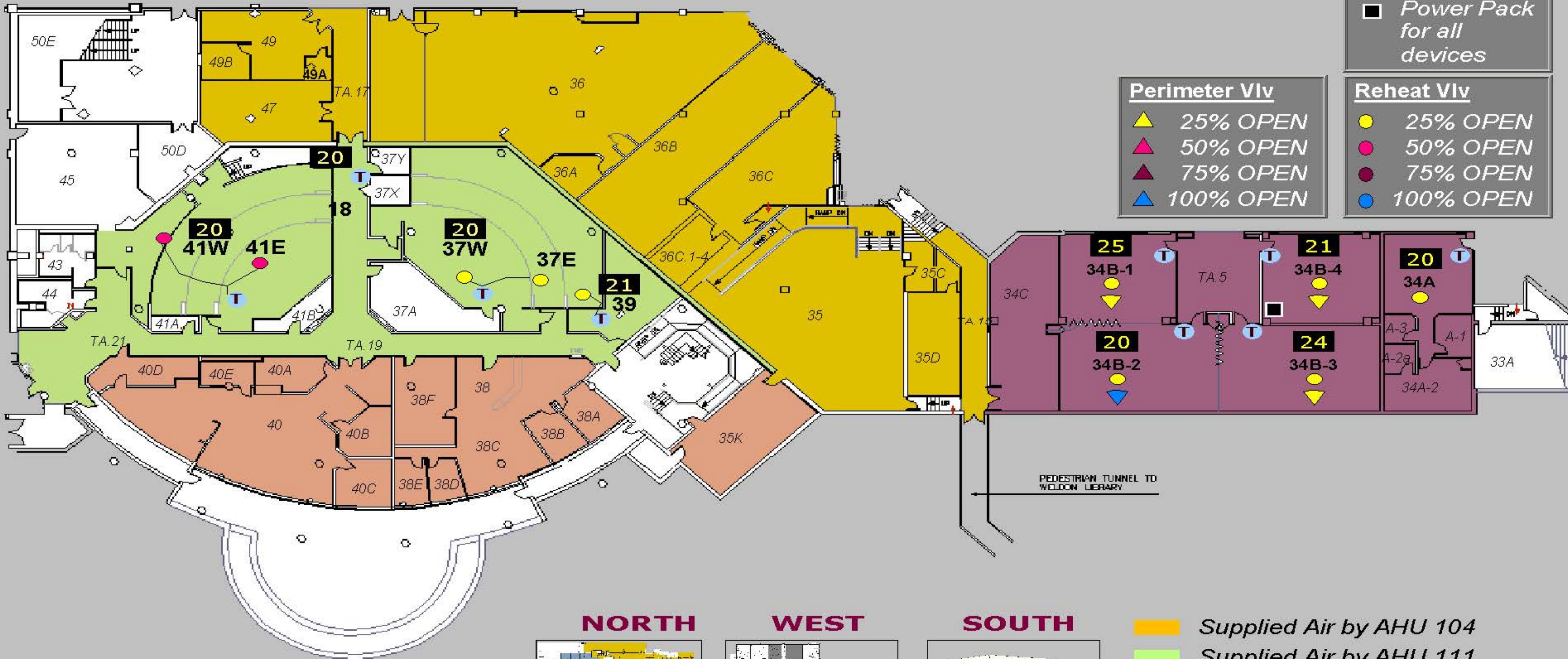
- Power Pack for all devices

Perimeter Vlv

- ▲ 25% OPEN
- ▲ 50% OPEN
- ▲ 75% OPEN
- ▲ 100% OPEN

Reheat Vlv

- 25% OPEN
- 50% OPEN
- 75% OPEN
- 100% OPEN



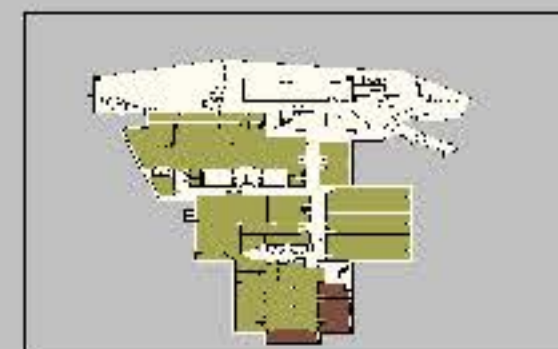
NORTH



WEST



SOUTH

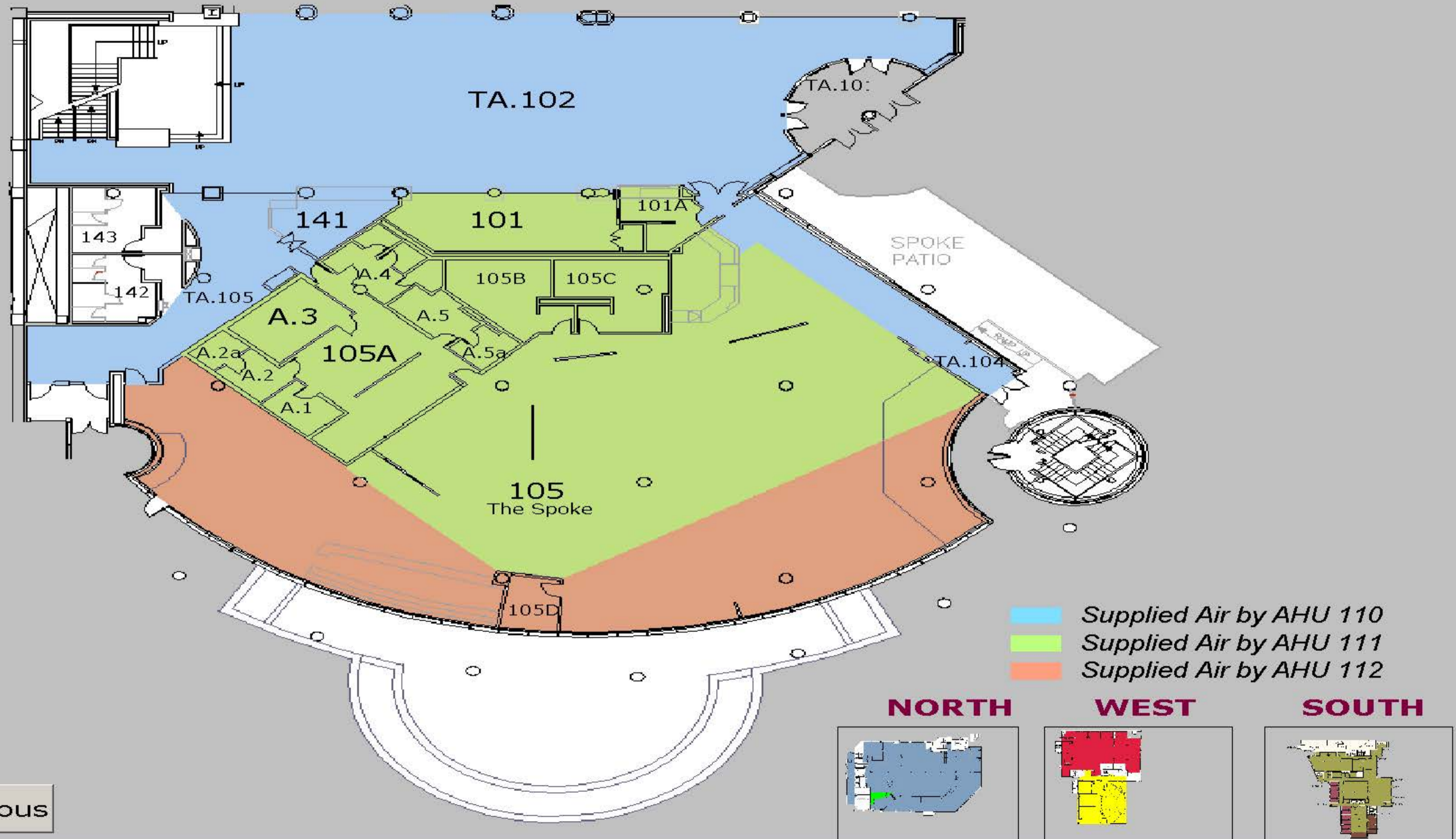


- Supplied Air by AHU 104
- Supplied Air by AHU 111
- Supplied Air by AHU 112
- Supplied Air by AHU 114

Main

Previous

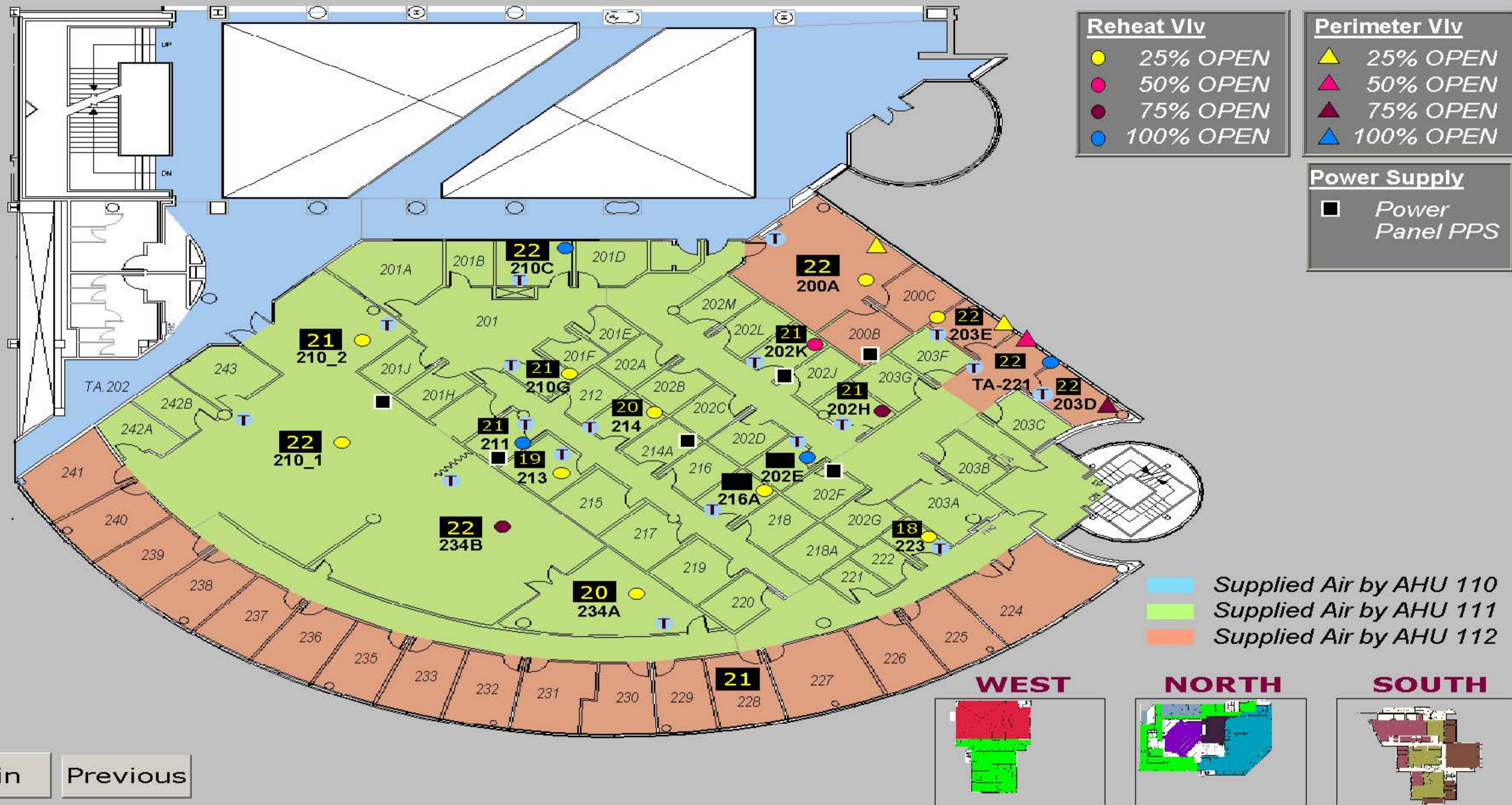
UNIVERSITY COMMUNITY CENTRE - 1st FLOOR EAST



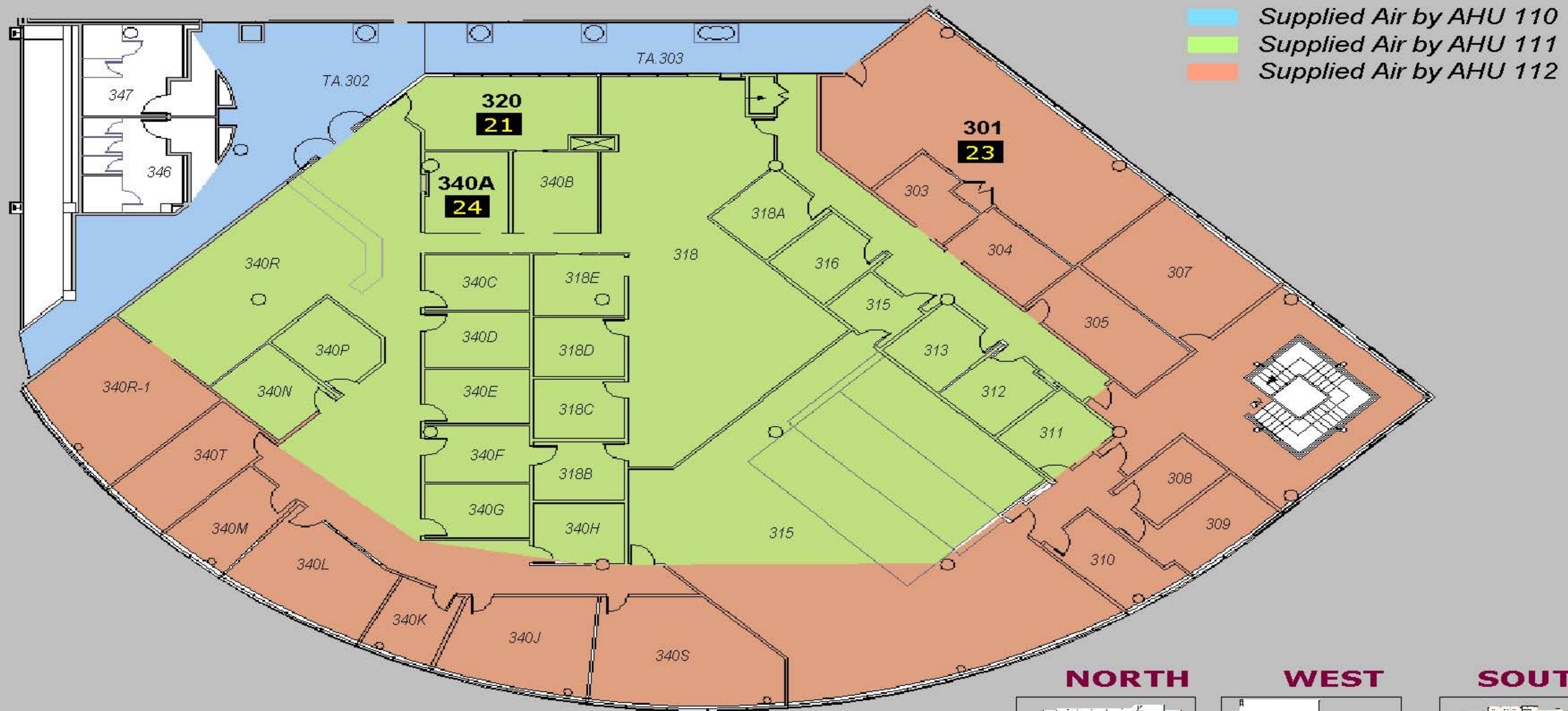
Main

Previous

UNIVERSITY COMMUNITY CENTRE - 2nd FLOOR EAST



UNIVERSITY COMMUNITY CENTRE - 3rd FLOOR EAST

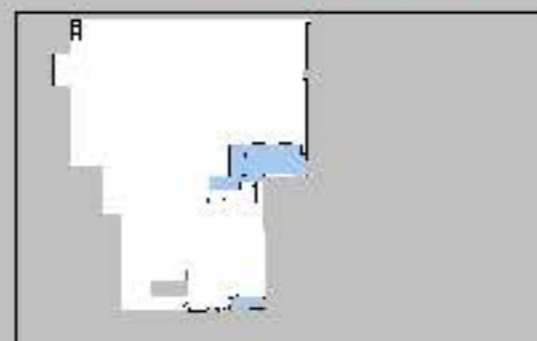


- Supplied Air by AHU 110
- Supplied Air by AHU 111
- Supplied Air by AHU 112

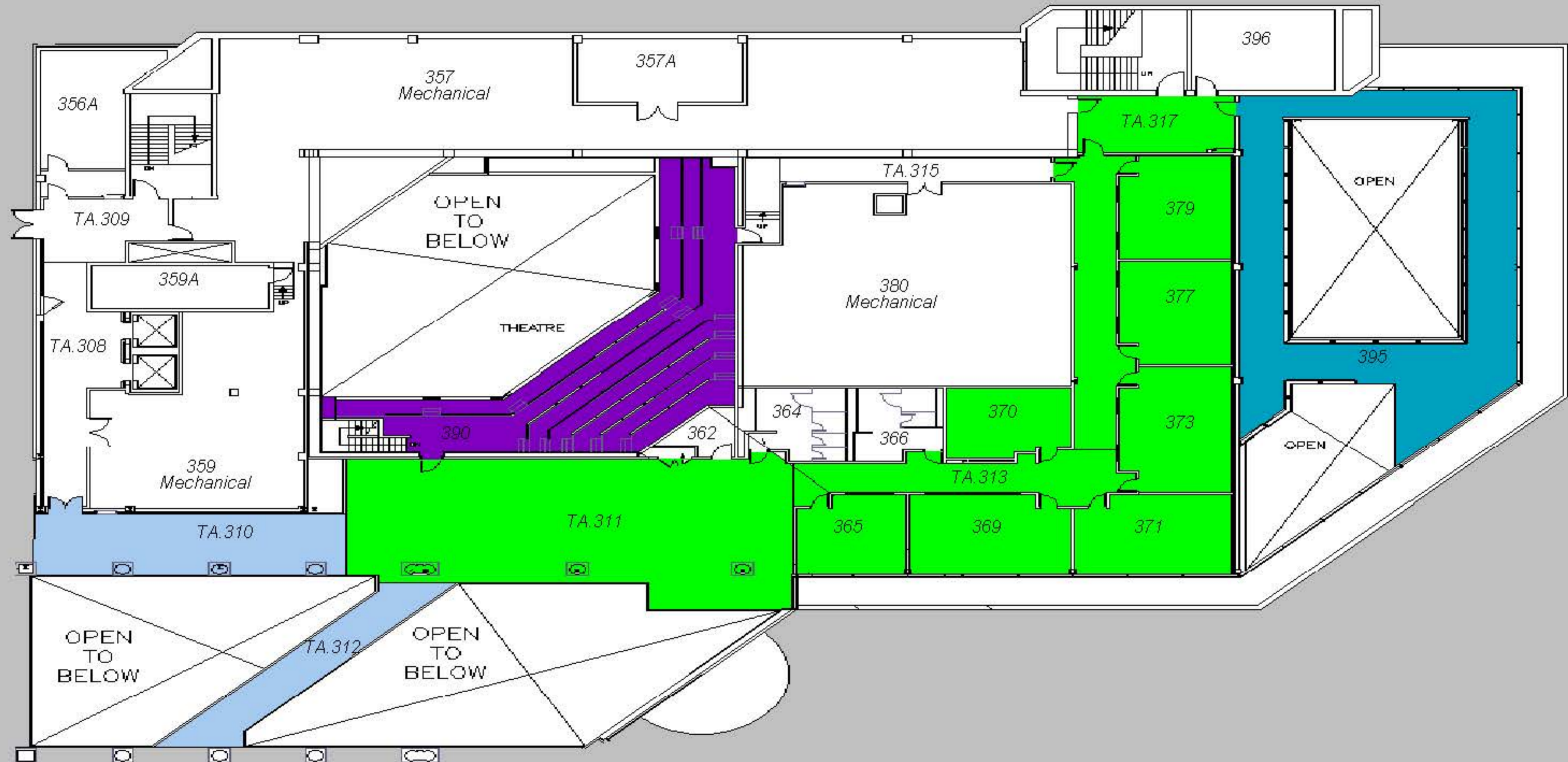
NORTH





WEST

SOUTH



UNIVERSITY COMMUNITY CENTRE - 3rd FLOOR NORTH

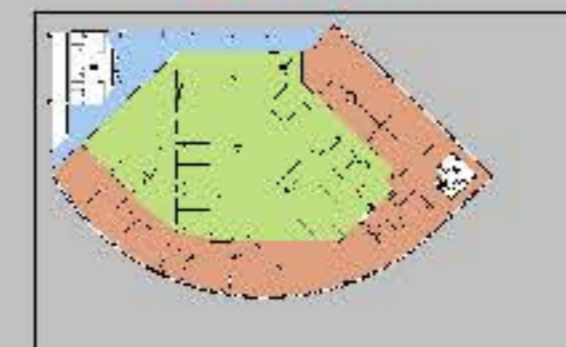


-  Supplied Air by AHU 103
-  Supplied Air by AHU 107
-  Supplied Air by AHU 109
-  Supplied Air by AHU 110

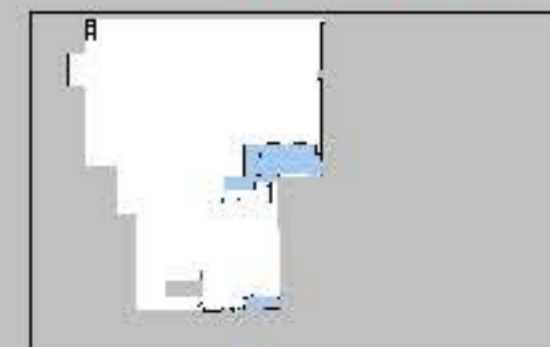
Main

Previous

EAST



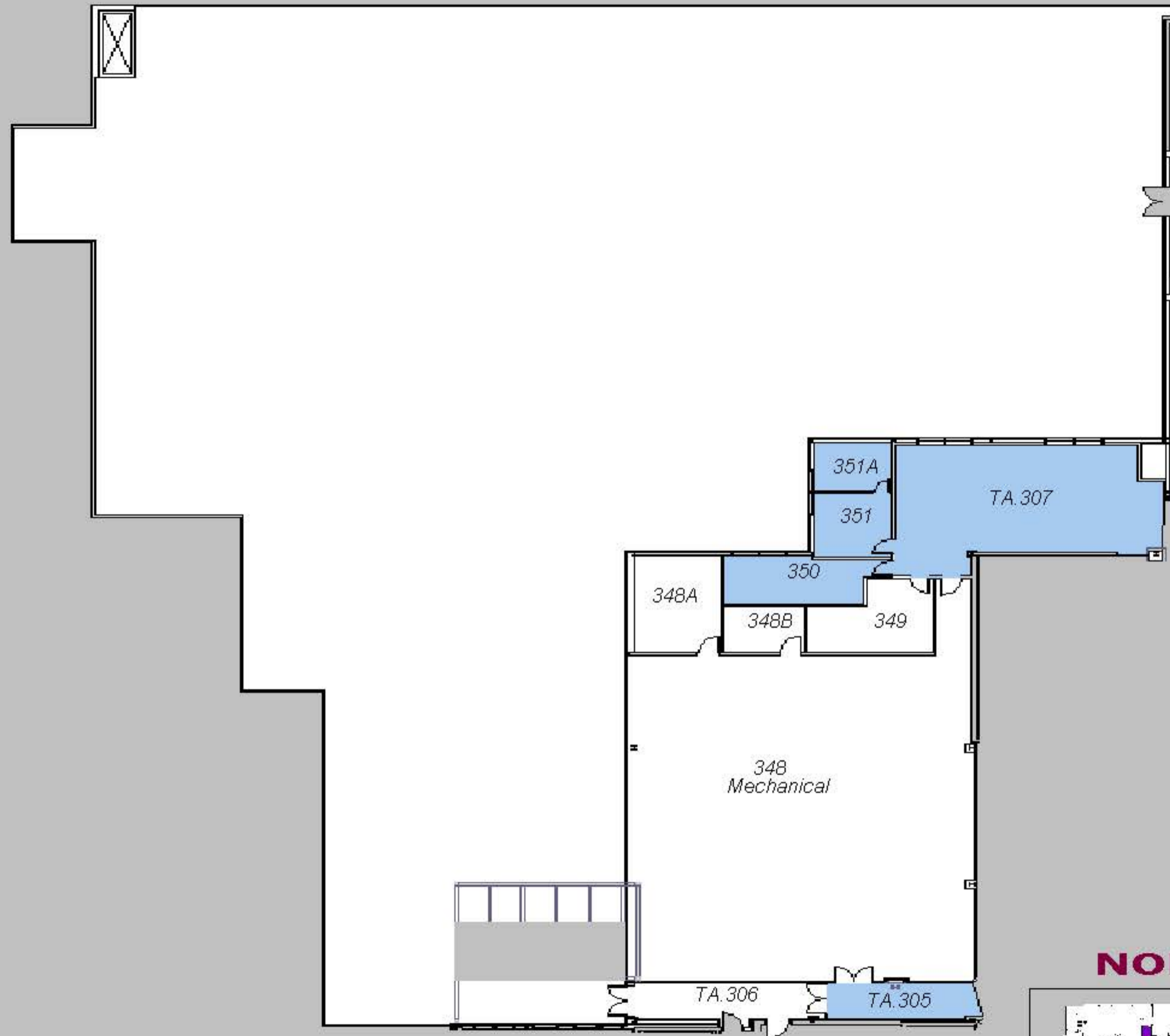
WEST



SOUTH



UNIVERSITY COMMUNITY CENTRE - 3rd FLOOR WEST

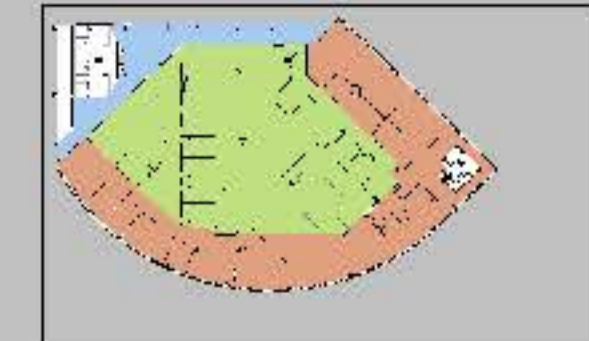


Supplied Air by AHU 110

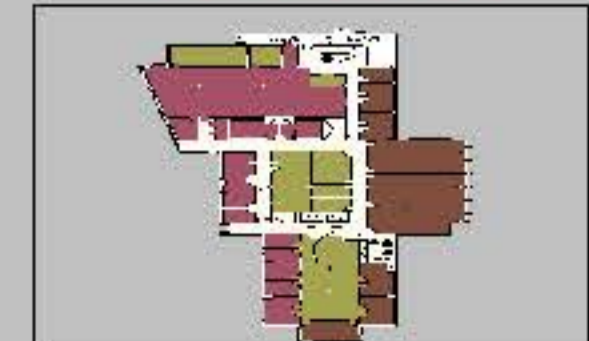
NORTH



EAST



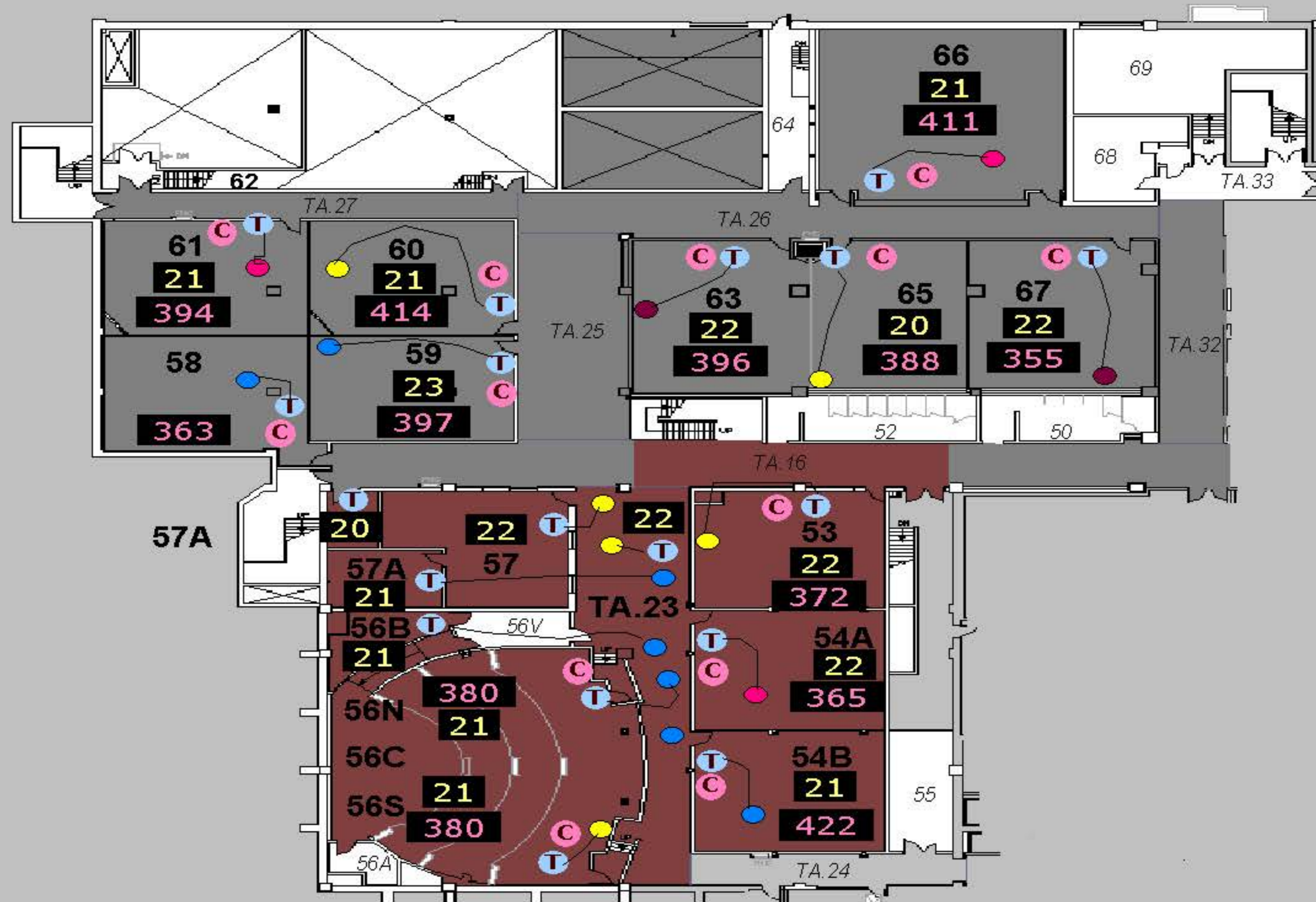
SOUTH



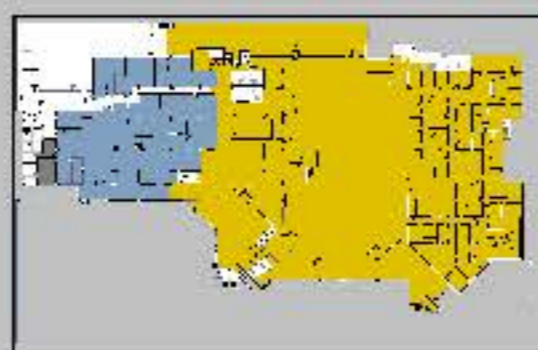
Main

Previous

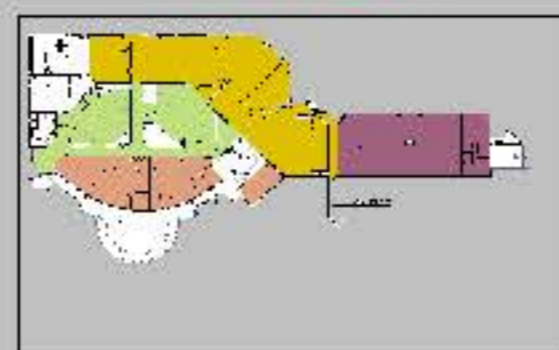
UNIVERSITY COMMUNITY CENTRE - BASEMENT FLOOR WEST



NORTH



EAST



SOUTH

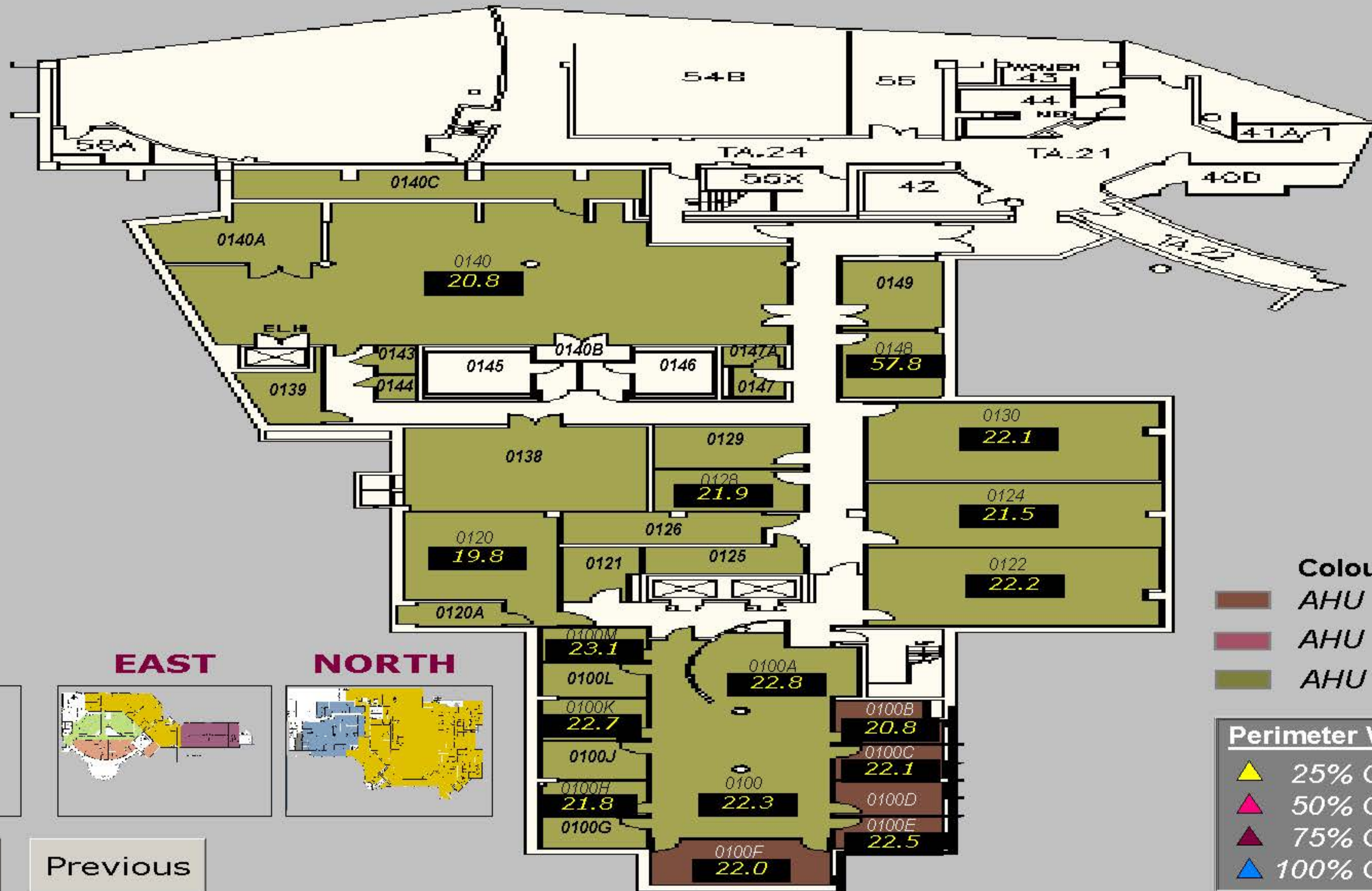


 Supplied Air by AHU 108
 Supplied Air by AHU 106

Main

Previous

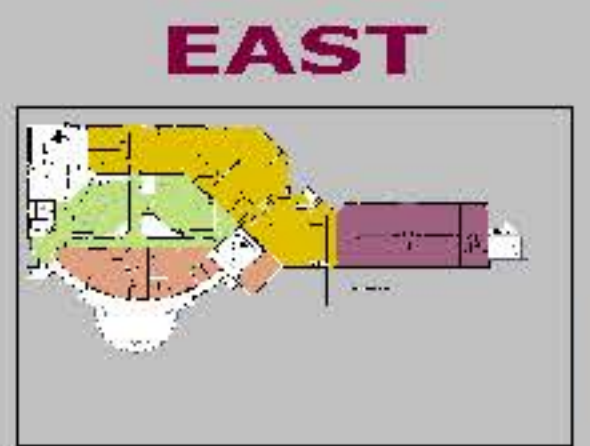
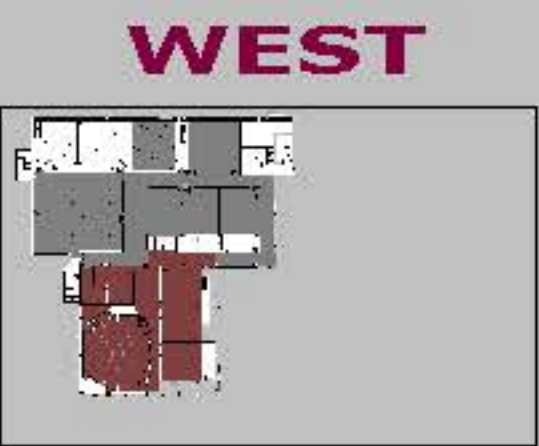
Student Services Administration - Basement



Colour Block Legend :

- AHU 113 (Brown)
- AHU 114 (Pink)
- AHU 115 (Olive Green)

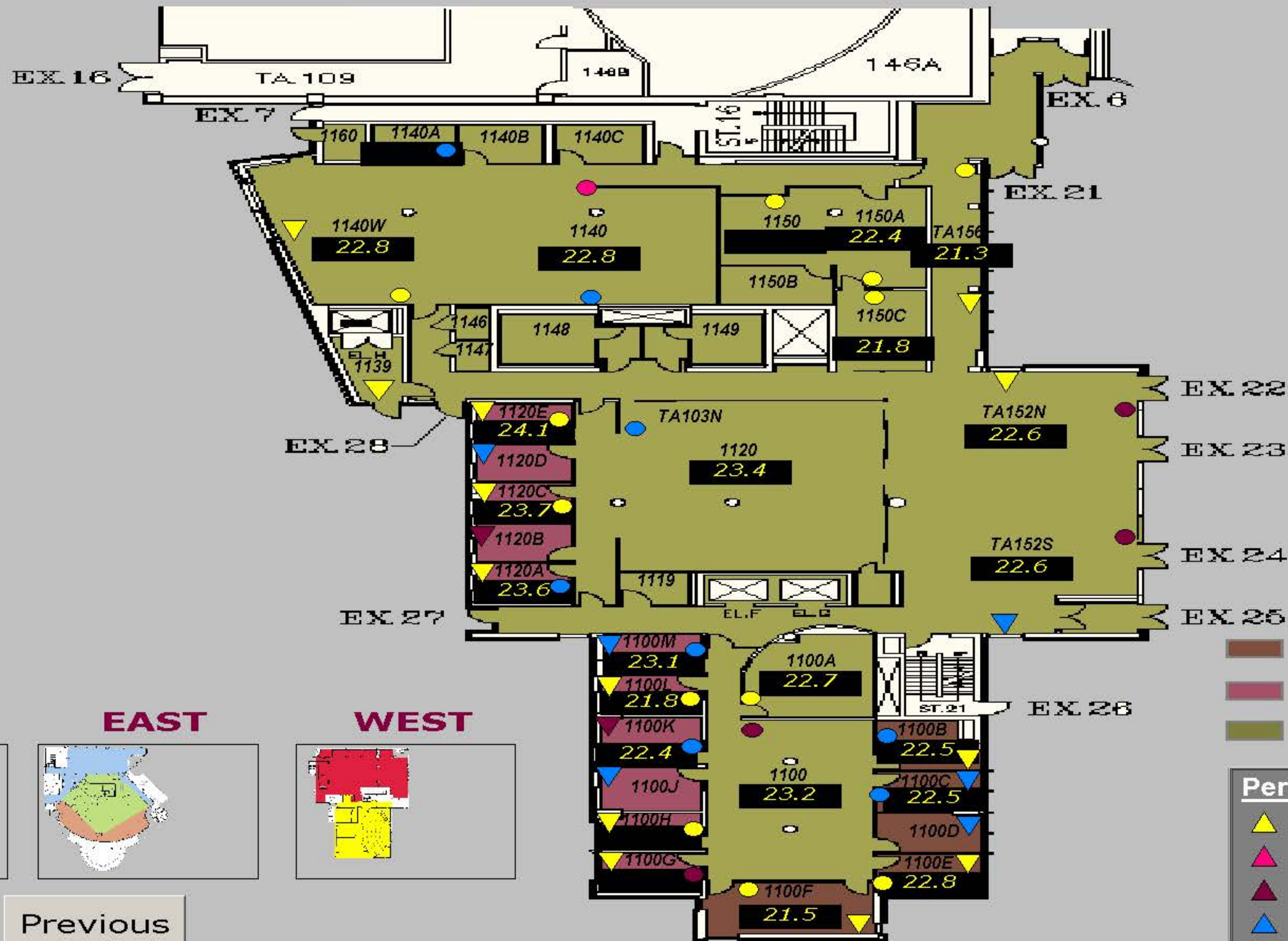
Perimeter Vlv		Reheat Vlv	
▲ (Yellow)	25% OPEN	● (Yellow)	25% OPEN
▲ (Pink)	50% OPEN	● (Pink)	50% OPEN
▲ (Red)	75% OPEN	● (Red)	75% OPEN
▲ (Blue)	100% OPEN	● (Blue)	100% OPEN



Main

Previous

Student Services Administration - Ground Floor



Colour Block Legend :

- AHU 113
- AHU 114
- AHU 115

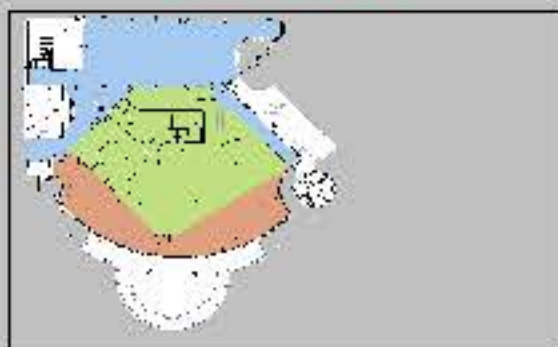
Perimeter Vlv	
▲	25% OPEN
▲	50% OPEN
▲	75% OPEN
▲	100% OPEN

Reheat Vlv	
●	25% OPEN
●	50% OPEN
●	75% OPEN
●	100% OPEN

NORTH

EAST

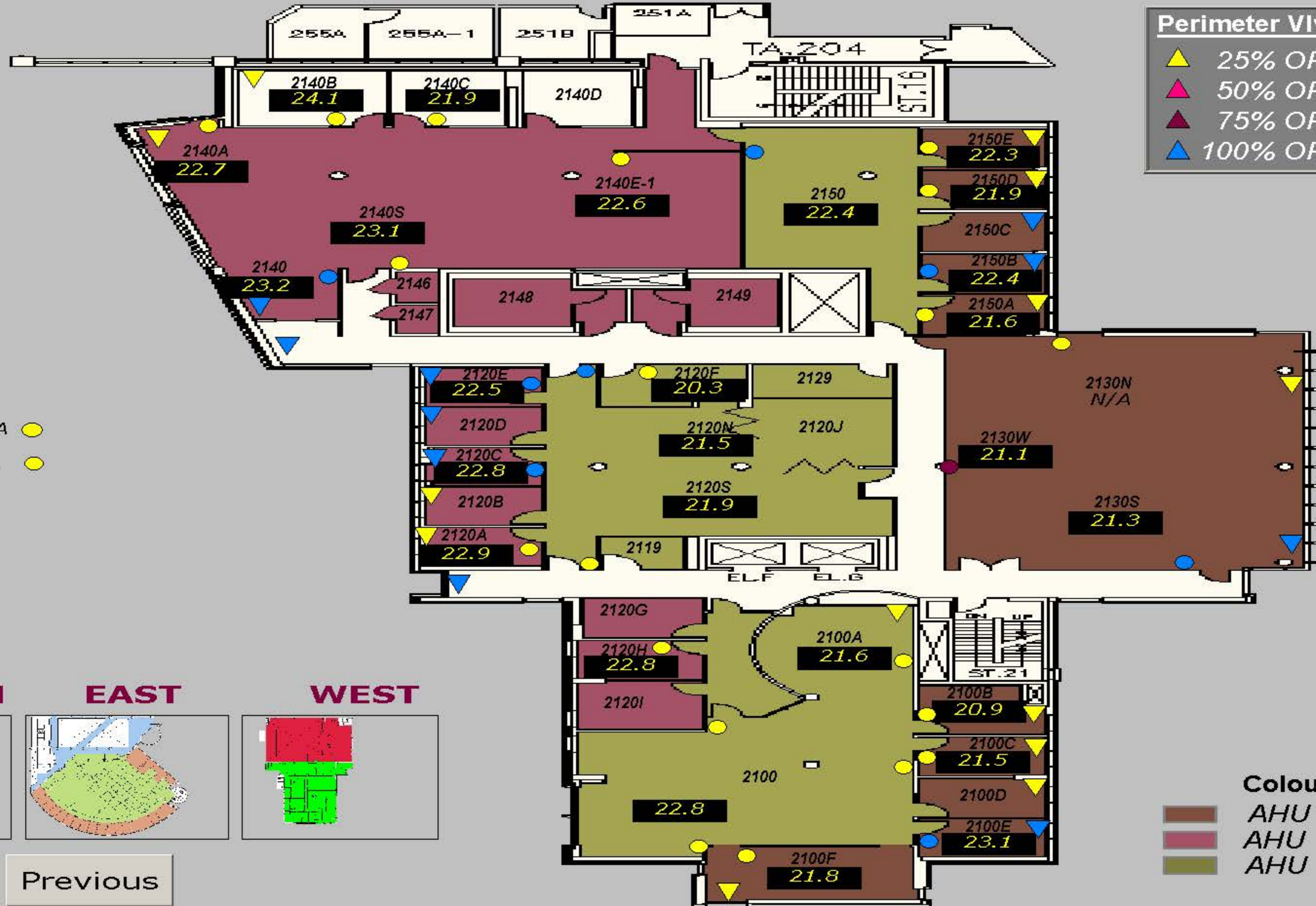
WEST



Main

Previous

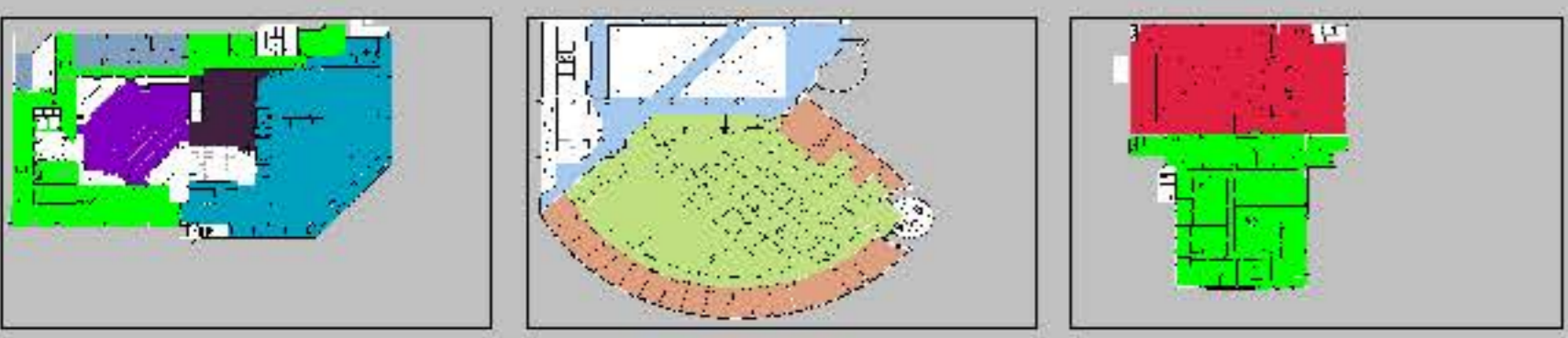
Student Services Administration - Floor 2



Perimeter Vlv		Reheat Vlv	
▲ (Yellow)	25% OPEN	● (Yellow)	25% OPEN
▲ (Pink)	50% OPEN	● (Pink)	50% OPEN
▲ (Maroon)	75% OPEN	● (Maroon)	75% OPEN
▲ (Blue)	100% OPEN	● (Blue)	100% OPEN

2140N N/A ●
 2140E-2 N/A ●

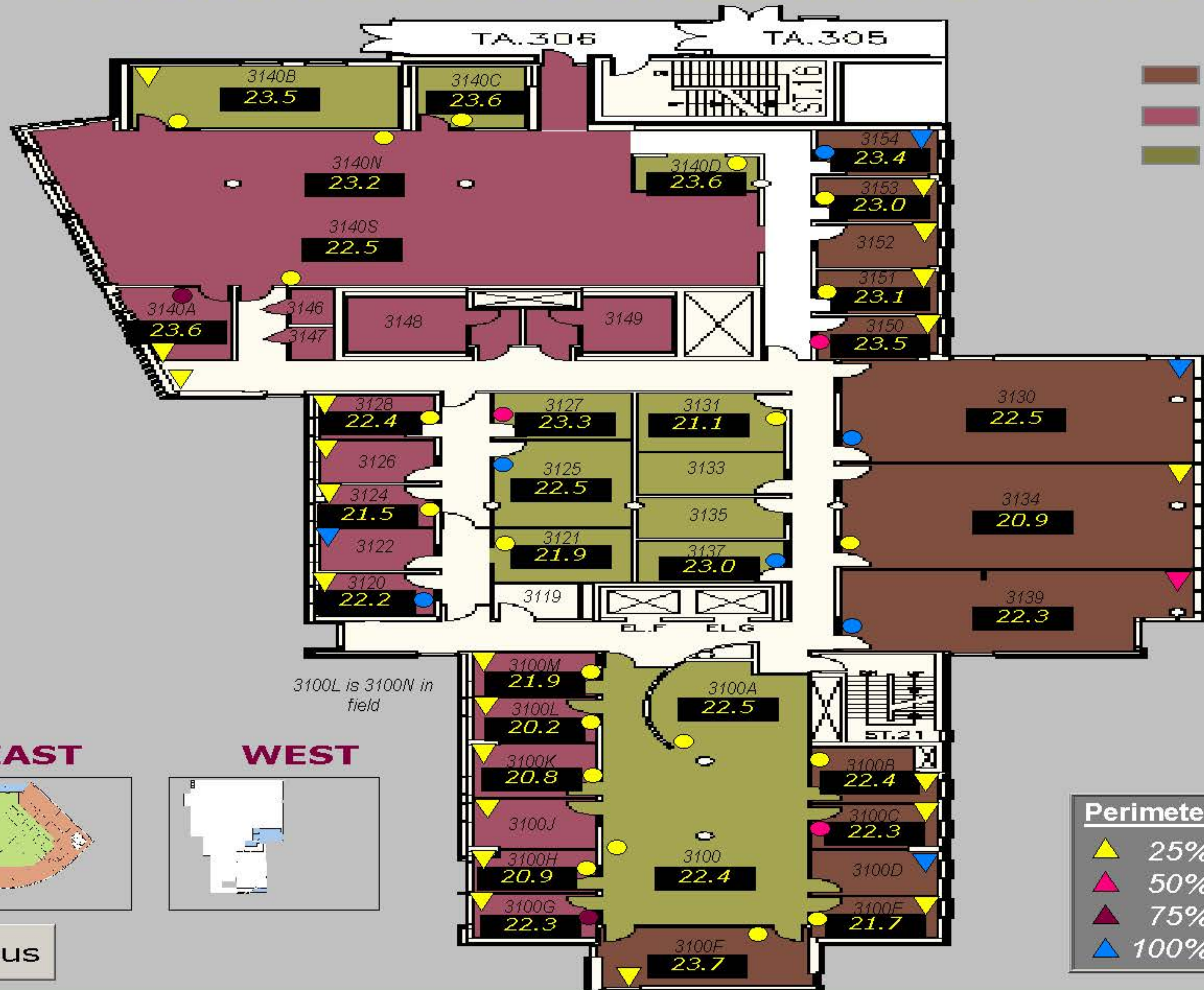
NORTH **EAST** **WEST**



Colour Block Legend :

■ (Brown)	AHU 113
■ (Maroon)	AHU 114
■ (Olive)	AHU 115

Student Services Administration - Floor 3



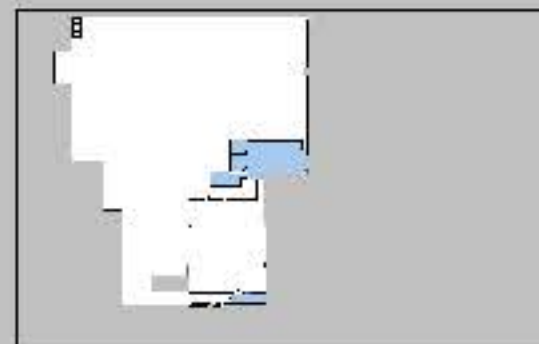
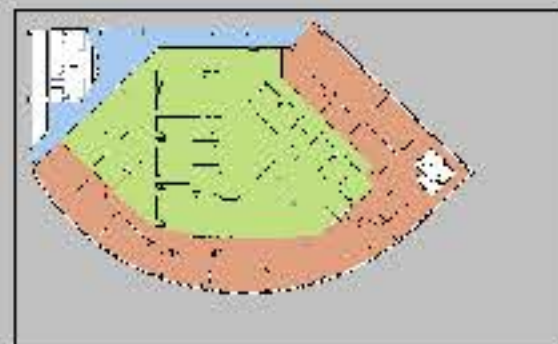
Colour Block Legend :

- AHU 113
- AHU 114
- AHU 115

NORTH

EAST

WEST



3100L is 3100N in field

Main

Previous

Perimeter Vlv

- 25% OPEN
- 50% OPEN
- 75% OPEN
- 100% OPEN

Reheat Vlv

- 25% OPEN
- 50% OPEN
- 75% OPEN
- 100% OPEN