



Western UNIVERSITY • CANADA

Notice of Service Interruption/Area Closure
Western University
Facilities Management

Client Services 519-661-3304 (fmhelp@uwo.ca)

Submit by E-mail

Print Form

Date of Interruption/Closure	Jan 22, 2014	Time(s):	7:00am - 12:00pm (noon)
------------------------------	--------------	----------	-------------------------

Building(s) Affected:	#1 Dental Sciences	#2	
	#3	#4	

Areas/Rooms Affected Alternate Route/Service:

Room 4011 Ceiling Access.
Supply Air Fans 101-500, 102-500, 103-500, and 104-500, See attached print for details of area of interruption

Service to be interrupted:	#1 Supply Air Fan	#2 Return Air Fan
	#3	#4

Description/Reason for Project:

Listed Supply Air Fans and Return Fans will be shut down for duration of interruption in order to safely gain access to Ceiling space as this is an Asbestos area.
Inspection of Suspected Leaking Floor Drain from Room 5560

Requester:	Jason Farrants	Date of Request:	Jan 15, 2014
------------	----------------	------------------	--------------

Supervising Tradesperson:	Jason Farrants	Unit:	Plumbing
---------------------------	----------------	-------	----------

Trade Supervisor:	Carmen Bertone	Unit:	Plumbing	Date:	Jan 15, 2014
-------------------	----------------	-------	----------	-------	--------------

Contractor:		Phone #	
-------------	--	---------	--

Coordinator/Project Manager:		Phone #		Date:	
------------------------------	--	---------	--	-------	--

Reviewed by Trade Supervisor(s)/Shop(s) Affected:

Name:	Carmen Bertone	Date:	Jan 15, 2014	Name:	Electrical Mechanical Shop/ Carpenter Shop	Date:	Jan 15, 2014
-------	----------------	-------	--------------	-------	--	-------	--------------

Signature/Stamp:

Signature/Stamp: **APPROVED**
By Steve Pepper (spepper@uwo.ca) at 1:43 pm, Jan 15, 2014

Reviewed by:

Name:	WES Control	Date:	
-------	-------------	-------	--

Signature/Stamp: **RECEIVED**
By Wayne Drummond (ppdwad@uwo.ca) at 1:39 pm, Jan 15, 2014

Principal Occupants:

Name:	Ext.	Date:

Approval to Proceed:	Date:	Approval to Proceed:	Date:
----------------------	-------	----------------------	-------

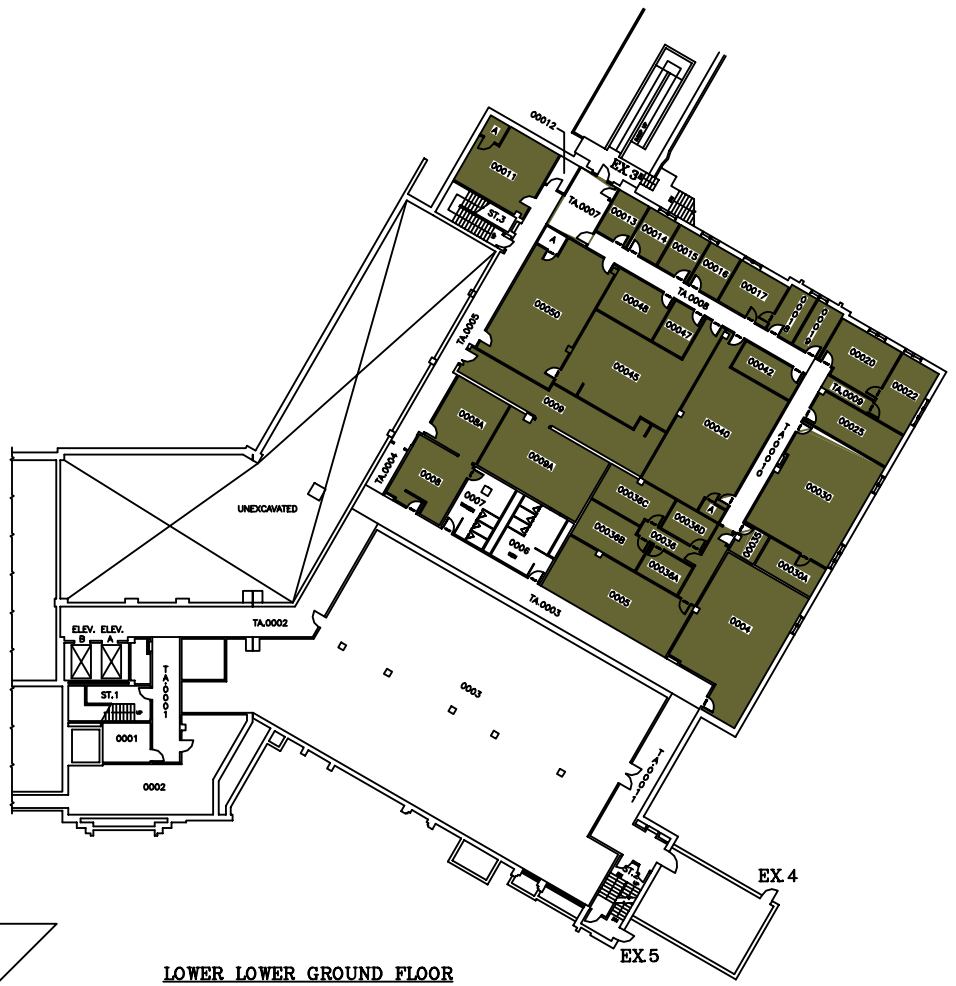
APPROVED
By Joe Arbique (jarbique@uwo.ca) at 2:30 pm, Jan 15, 2014

Notes: 14 day weather trend indicates outside temperatures -10 degrees Celsius
Work Order to Motor Shop
Work Order to Carpenter Shop
Work Order to Plumbing Shop



BASEMENT FLOOR

787.88 FT.



LOWER LOWER GROUND FLOOR

798.89 FT.

SYSTEM	ZONE #
113	A
114	B
	C

**THE UNIVERSITY of WESTERN ONTARIO
PHYSICAL PLANT DEPARTMENT**

	SCALE
	DATE 98-01-28
	DRAWN R. THOMAS
	CHECKED
	APPROVED

Facilities Engineering & Construction

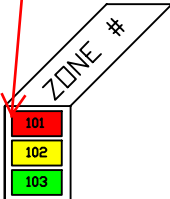
SCALE 1" = 16' 0" (BASEMENT & LOWER LOWER GROUND FLOORS)

MINIATURE FLOOR PLAN - LEVELS 01 & 02
(BASEMENT & LOWER LOWER GROUND FLOORS)

DENTAL SCIENCES BLDG.

01

JANUARY 22, 2014
 7:00AM - 12:00PM (NOON)
 SYSTEM 101, 102, 103, AND 104 OFF
 FOR DURATION OF SERVICE
 INTERRUPTION AFFECTING ALL
 FLOORS



THE UNIVERSITY of WESTERN ONTARIO
 PHYSICAL PLANT DEPARTMENT

	N	SCALE
	N	DATE
		DESIGNED BY
		CHECKED BY
		APPROVED BY

Facilities Engineering & Construction

SCALE 0 5 10 15 20 25 30 35 40 45 50 55 60 65 70 75 80 85 90 95 100

MINIATURE FLOOR PLAN - LEVEL 05 (FIRST FLOOR)

DENTAL SCIENCES BLDG.

04

JANUARY 22, 2014
 7:00AM - 12:00PM (NOON)
 SYSTEM 101, 102, 103, AND 104 OFF
 FOR DURATION OF SERVICE
 INTERRUPTION AFFECTING ALL
 FLOORS



SYSTEM	ZONE #
101	F
102	G
103	H
	I

THE UNIVERSITY of WESTERN ONTARIO
 PHYSICAL PLANT DEPARTMENT

SCALE: 1/4" = 1'-0"

DATE: 08-09-08

DRAWN BY: R. THOMAS

CHECKED BY:

APPROVED BY:

Facilities Engineering & Construction

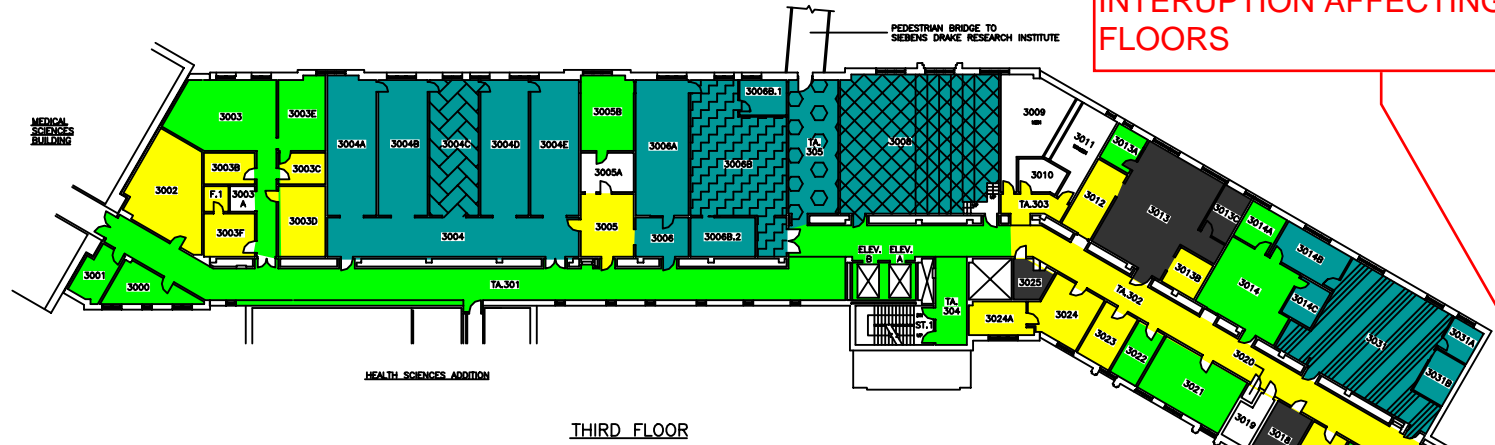
SCALE: 1/4" = 1'-0"

MINIATURE FLOOR PLAN - LEVEL 06 (SECOND FLOOR)

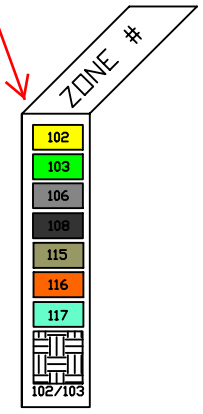
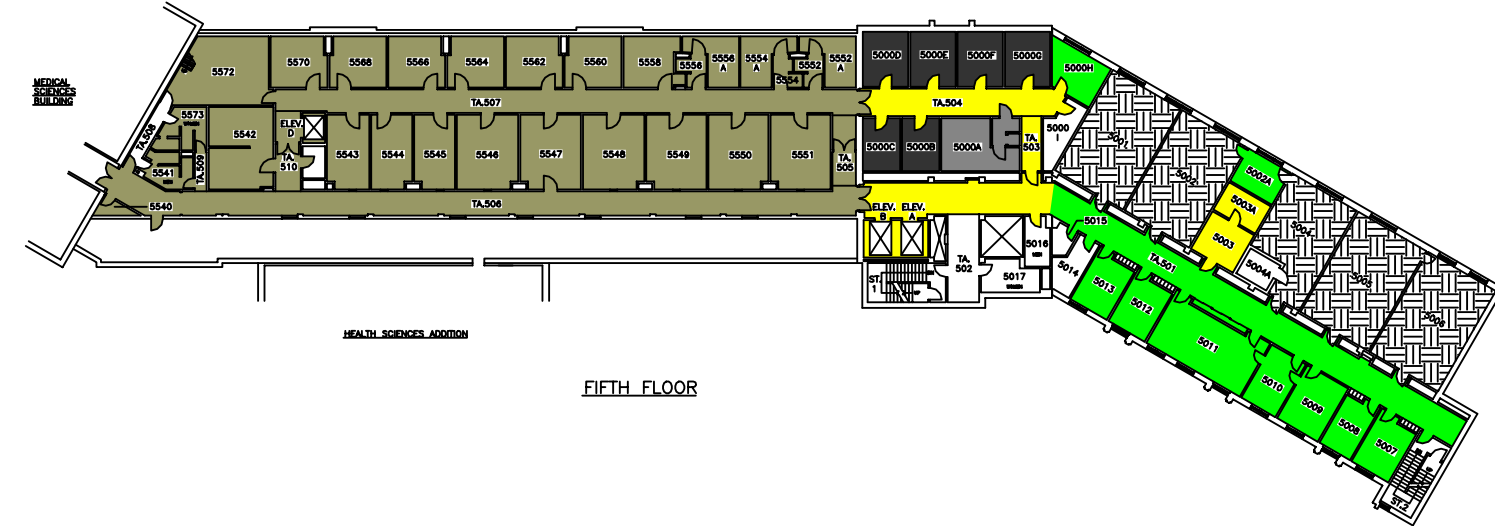
DENTAL SCIENCES BLDG.

05

JANUARY 22, 2014
7:00AM - 12:00PM (NOON)
SYSTEM 101, 102, 103, AND 104 OFF
FOR DURATION OF SERVICE
INTERRUPTION AFFECTING ALL
FLOORS



JANUARY 22, 2014
 7:00AM - 12:00PM (NOON)
 SYSTEM 101, 102, 103, AND 104 OFF
 FOR DURATION OF SERVICE
 INTERRUPTION AFFECTING ALL
 FLOORS



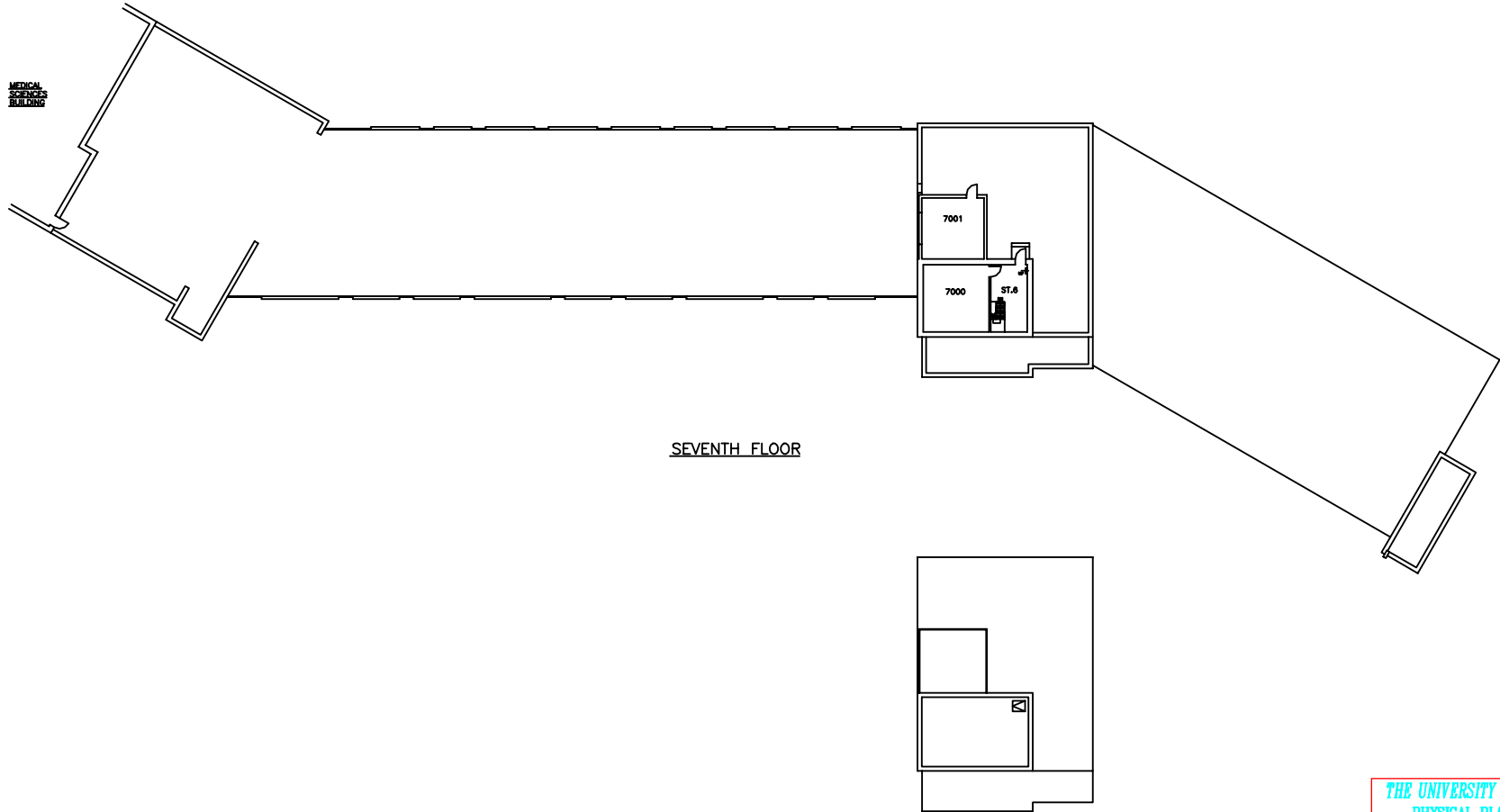
THE UNIVERSITY of WESTERN ONTARIO
 PHYSICAL PLANT DEPARTMENT

	SCALE
	DATE 98-01-21
	DESIGNED BY R. THOMAS
	CHECKED BY [Signature]

Facilities Engineering & Construction

MINIATURE FLOOR PLANS - LEVELS 09 & 10
 (5TH AND 6TH FLOORS)

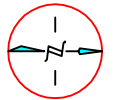
DENTAL SCIENCES BLDG. 07



SEVENTH FLOOR

PENTHOUSE ROOF

THE UNIVERSITY of WESTERN ONTARIO
PHYSICAL PLANT DEPARTMENT



SCALE
DATE
98-01-21
DRAWN
R. THOMAS
CHECKED
APPROVED

Facilities Engineering & Construction

SCALE 0 5 10 15 20 25 30
MINIATURE FLOOR PLANS - LEVEL 11
(PENTHOUSE FLOOR AND ROOF)

DRAWING No.
DSB\MIN
VARIES

DENTAL SCIENCES BLDG.

08

DENTAL SCIENCE - RM 5000/H

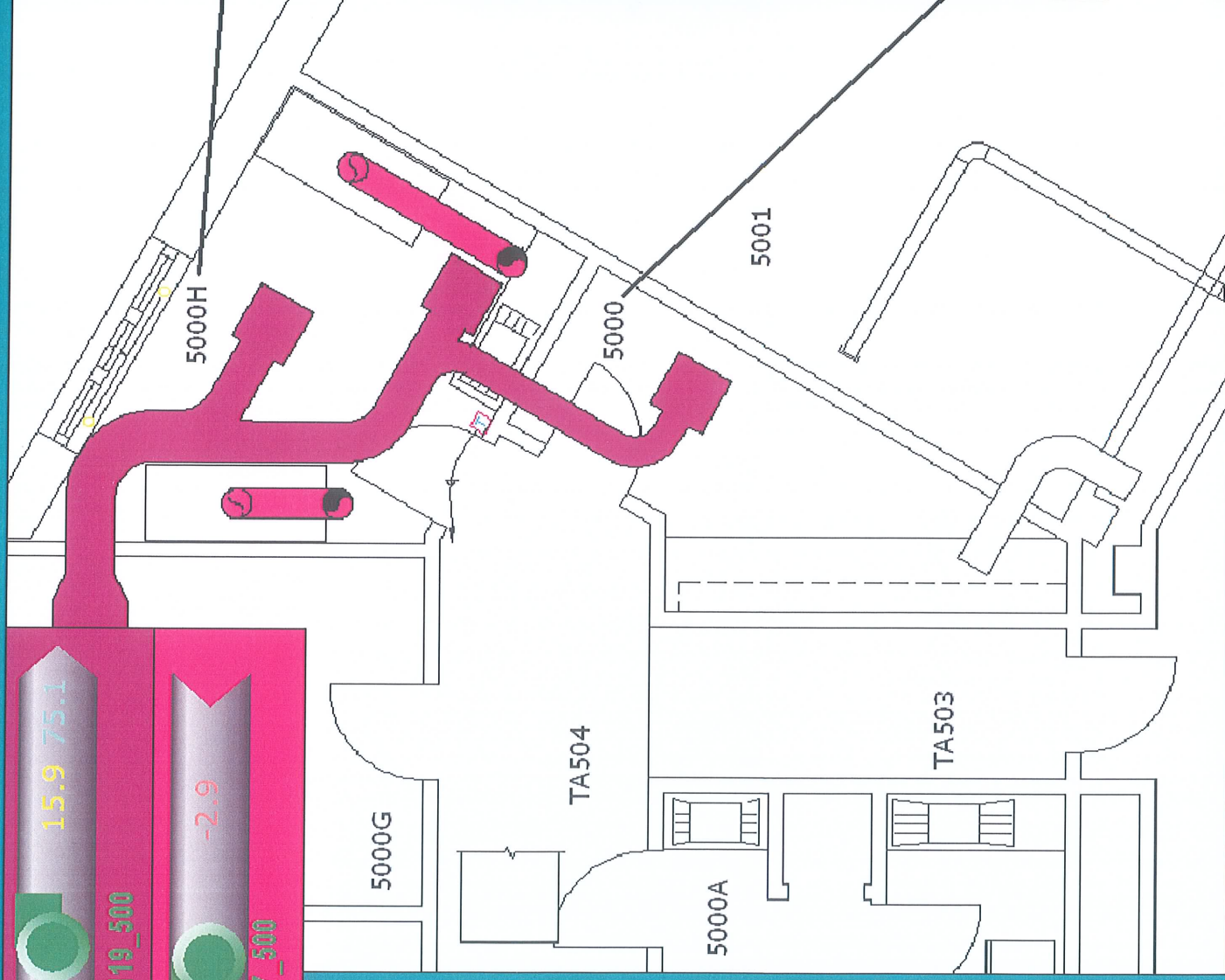
15.2
76.1

15.9 75.1

119_500

-2.9

007_500



room

OFF ON

18.5
calibration
59.6 30.0
calibration

Delta

room 5000

OFF ON

23.0 20.0
calibration
42.9 30.0
calibration

Delta

20.0 23.0

Previous



MSB / DSB – FIFTH FLOOR



MSB / DSB – SIXTH FLOOR

- CAGE WASHER
- INCINERATOR
- OFFICES
- LUNCH ROOM/STAFF ROOM

- AUTOCLAVE
- AUXILLARY SUPPORT ROOM
- BARRIER ROOMS (INCLUSION/EXCLUSION)
- BIO-HAZARD LEVEL 3
- DOG RUNS
- DOGS/PIGS
- INCLUSION/QUARANTINE/BIOHAZARD
- LAB/TREATMENT/PROCEDURE
- CFI QUARANTINE
- RABBITS/CATS
- RODENTS/RABBITS
- SURGERY SUITE/PREP AREA

EXISTING ROOM USAGES
R. THOMAS
09-08-21

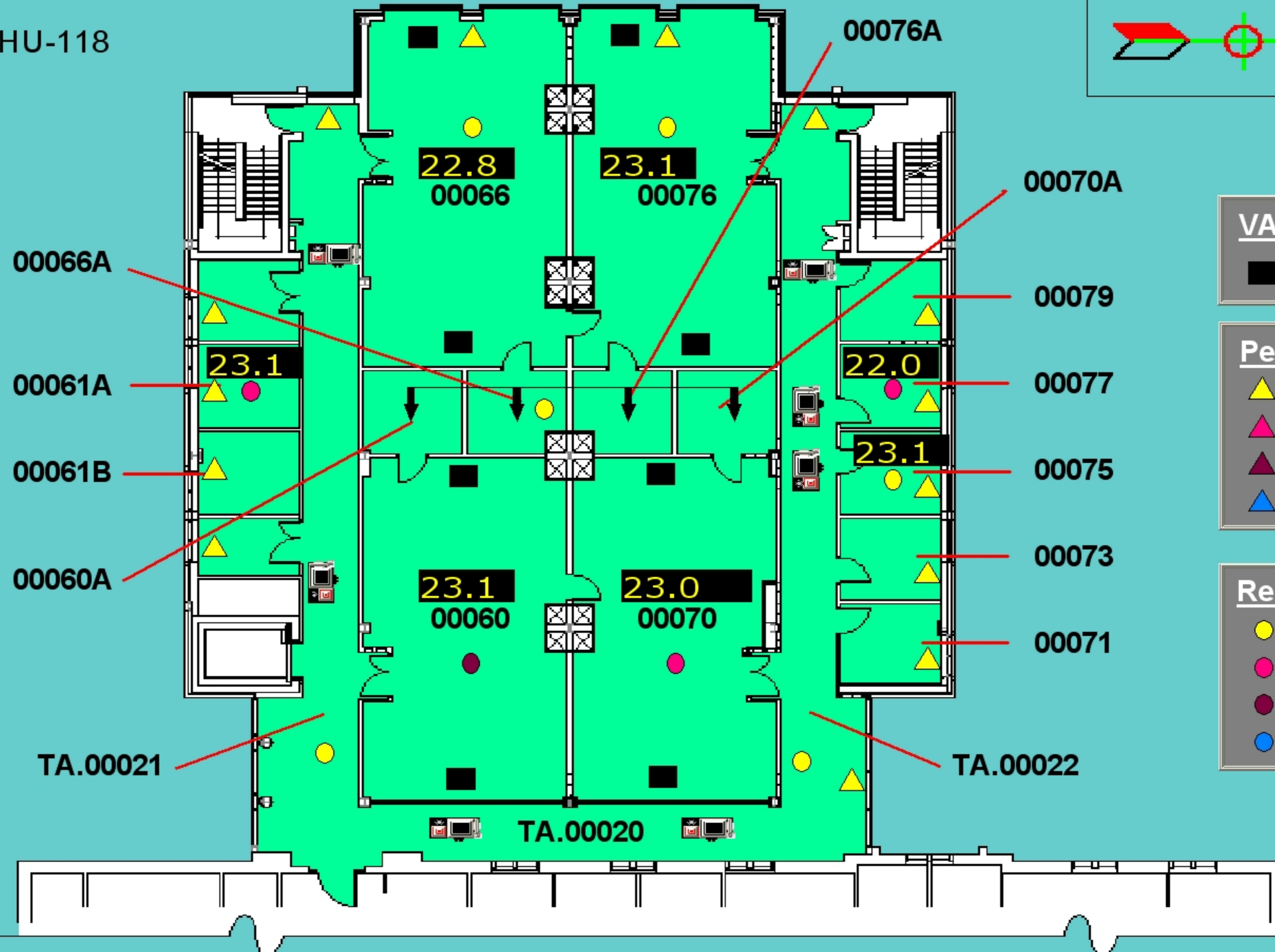
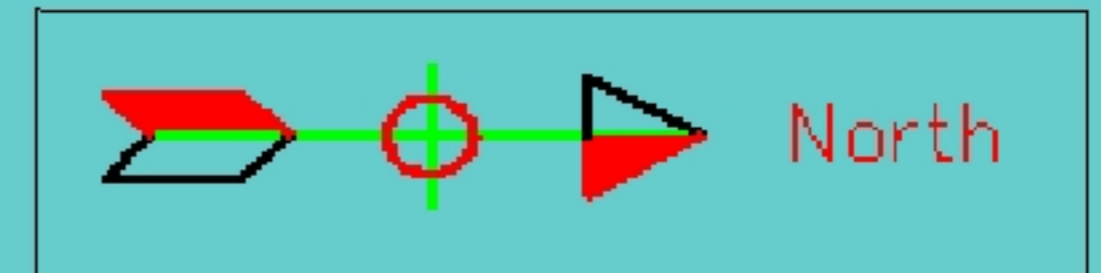
THE UNIVERSITY of WESTERN ONTARIO PHYSICAL PLANT & CAPITAL PLANNING SERVICES	
	SCALE DATE 2006-01-03 DRAWN R. THOMAS CHECKED APPROVED
Facilities Engineering	DWG. FILE No. MSB_MIN-5&6 GEODETIC ELEV.
SCALE 0 5 10 15 20 25 50	SHEET 01
5TH & 6TH FLOOR PLANS MEDICAL SCIENCES & DENTAL SCIENCES	

Dental Sciences Building - Lower Gnd

Colour Block Legend :

Supplied Air by AHU-118
SAT **15.1**

26.4°C
34.1%



VAV Exhaust Box
■

Perimeter Valve
▲ 25% OPEN
▲ 50% OPEN
▲ 75% OPEN
▲ 100% OPEN

Reheat Valve
● 25% OPEN
● 50% OPEN
● 75% OPEN
● 100% OPEN

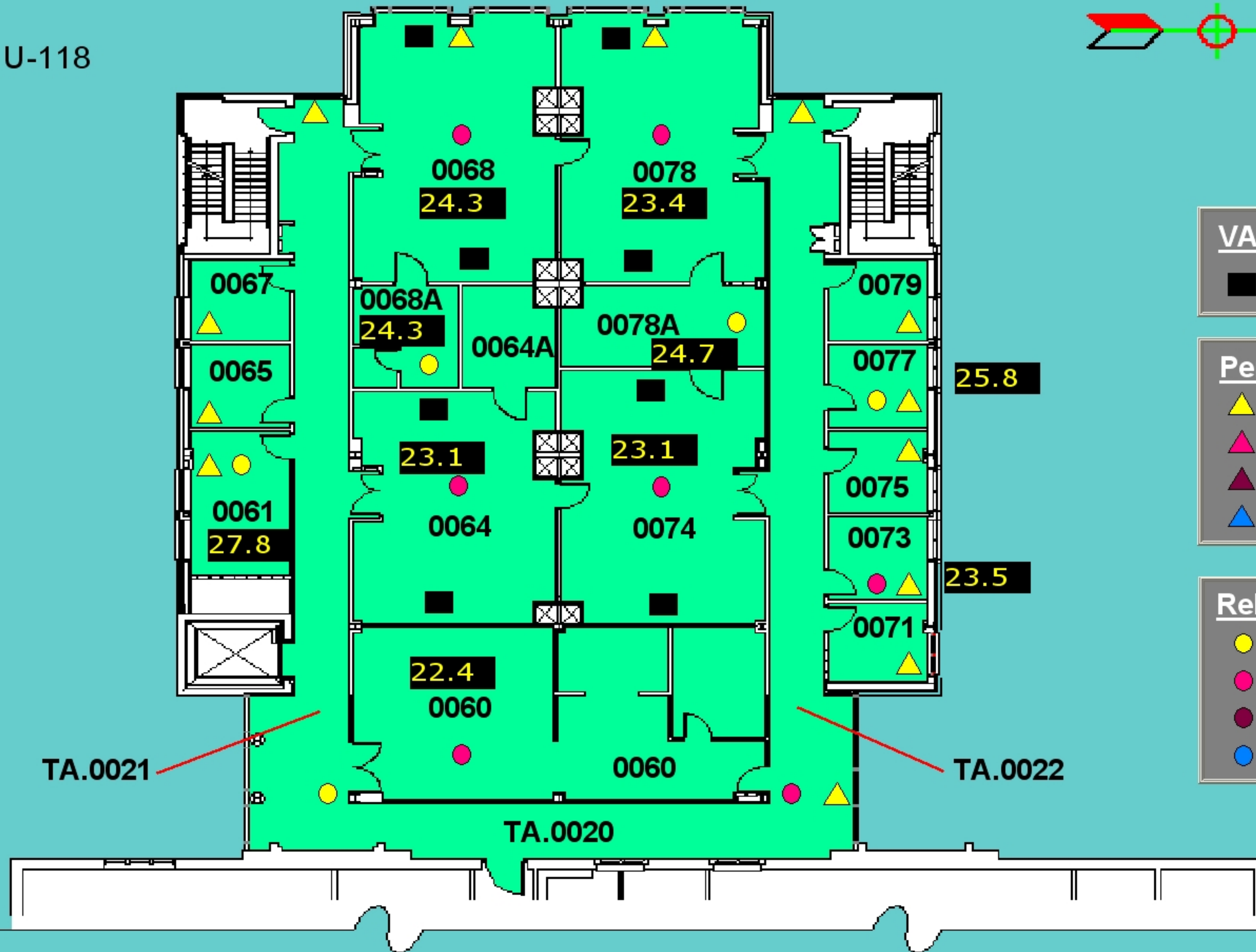
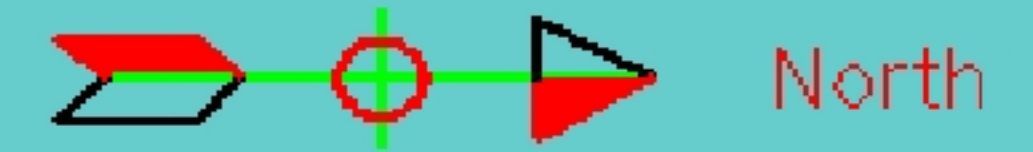
Previous

Dental Sciences Building - West Lower Gnd. Floor

Colour Block Legend :

Supplied Air by AHU-118

SAT **15.1**



VAV Exhaust Box
■

Perimeter Valve
▲ 25% OPEN
▲ 50% OPEN
▲ 75% OPEN
▲ 100% OPEN

Reheat Valve
● 25% OPEN
● 50% OPEN
● 75% OPEN
● 100% OPEN

Previous

