



Western  
UNIVERSITY • CANADA

Notice of Service Interruption/Area Closure  
Western University  
Facilities Management

Client Services 519-661-3304 (fmhelp@uwo.ca)

Submit by E-mail

Print Form

|                              |             |          |                       |
|------------------------------|-------------|----------|-----------------------|
| Date of Interruption/Closure | Mar 4, 2014 | Time(s): | 7:00AM - 12:00 (Noon) |
|------------------------------|-------------|----------|-----------------------|

|                       |                    |    |    |    |
|-----------------------|--------------------|----|----|----|
| Building(s) Affected: | #1 Dental Sciences | #2 | #3 | #4 |
|-----------------------|--------------------|----|----|----|

Areas/Rooms Affected Alternate Route/Service:

Room 6038, Animal Quarters

|                            |                  |    |    |    |
|----------------------------|------------------|----|----|----|
| Service to be interrupted: | #1 Pre - Heating | #2 | #3 | #4 |
|----------------------------|------------------|----|----|----|

Description/Reason for Project:

Supply Air Fan 117 - Preheat motor 313\_500 is leaking and requires repair



Requester: Steve Pepper

Date of Request: Feb 25, 2014

Supervising Tradesperson: Steve Pepper

Unit: Motor

Trade Supervisor: Steve MacKay

Unit: Motor

Date: Feb 25, 2014

Contractor:

Phone #

Coordinator/Project Manager:

Phone #

Date:

Reviewed by Trade Supervisor(s)/Shop(s) Affected:

|                                  |       |                   |       |
|----------------------------------|-------|-------------------|-------|
| Name: Electrical/Mechanical Shop | Date: | Name: WES Control | Date: |
|----------------------------------|-------|-------------------|-------|

|                  |  |
|------------------|--|
| Signature/Stamp: | Signature/Stamp: <b>RECEIVED</b><br>By Wayne Drummond (ppdwad@uwo.ca) at 2:43 pm, Feb 27, 2014 |
|------------------|--|

|                  |                      |       |       |
|------------------|----------------------|-------|-------|
| Reviewed by:     | Principal Occupants: |       |       |
| Name:            | Name:                | Ext.: | Date: |
| Date:            | Name:                | Ext.: | Date: |
| Signature/Stamp: | Name:                | Ext.: | Date: |
|                  | Name:                | Ext.: | Date: |

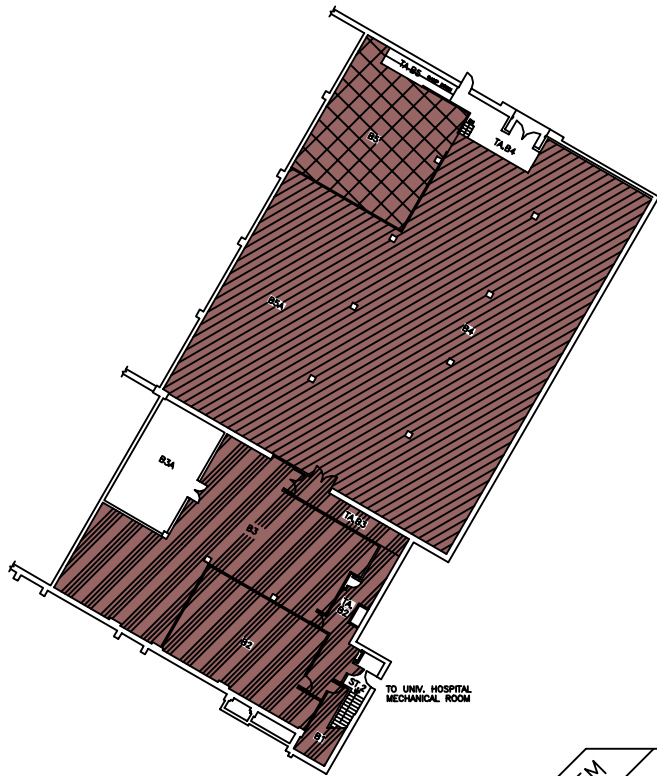
Approval to Proceed: Date:

Approval to Proceed: Date:

**APPROVED**

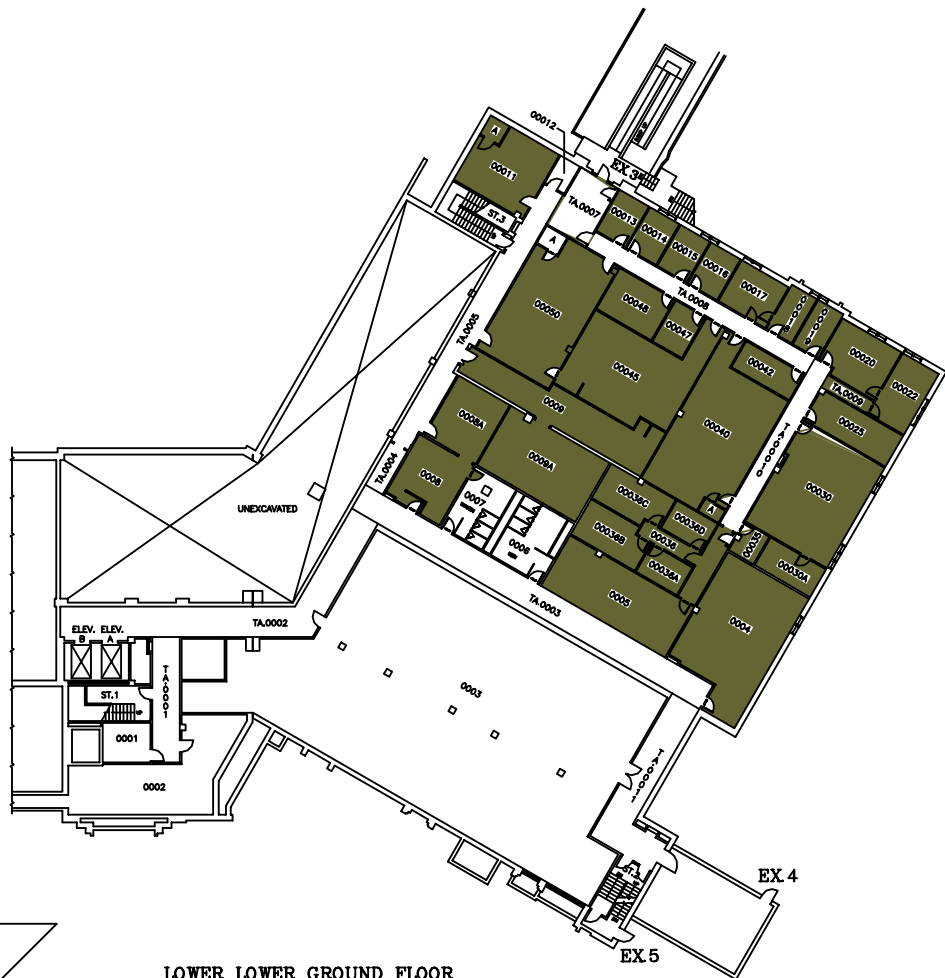
By Joe Arbique (jarbique@uwo.ca) at 2:59 pm, Feb 27, 2014

Notes:



**BASEMENT FLOOR**

787.88 FT.



**LOWER LOWER GROUND FLOOR**

798.89 FT.

| SYSTEM | ZONE # |
|--------|--------|
| 113    | A      |
| 114    | B      |
|        | C      |

**THE UNIVERSITY of WESTERN ONTARIO**  
**PHYSICAL PLANT DEPARTMENT**

SCALE: Varies  
 DATE: W9-01-28  
 DRAWN BY: R. THOMAS  
 CHECKED BY: [ ]  
 APPROVED BY: [ ]  
 DESIGNED BY: DSB/MIN  
 VARIATIONS: [ ]

**Facilities Engineering & Construction**

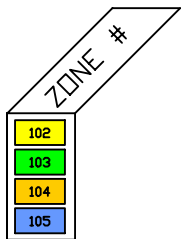
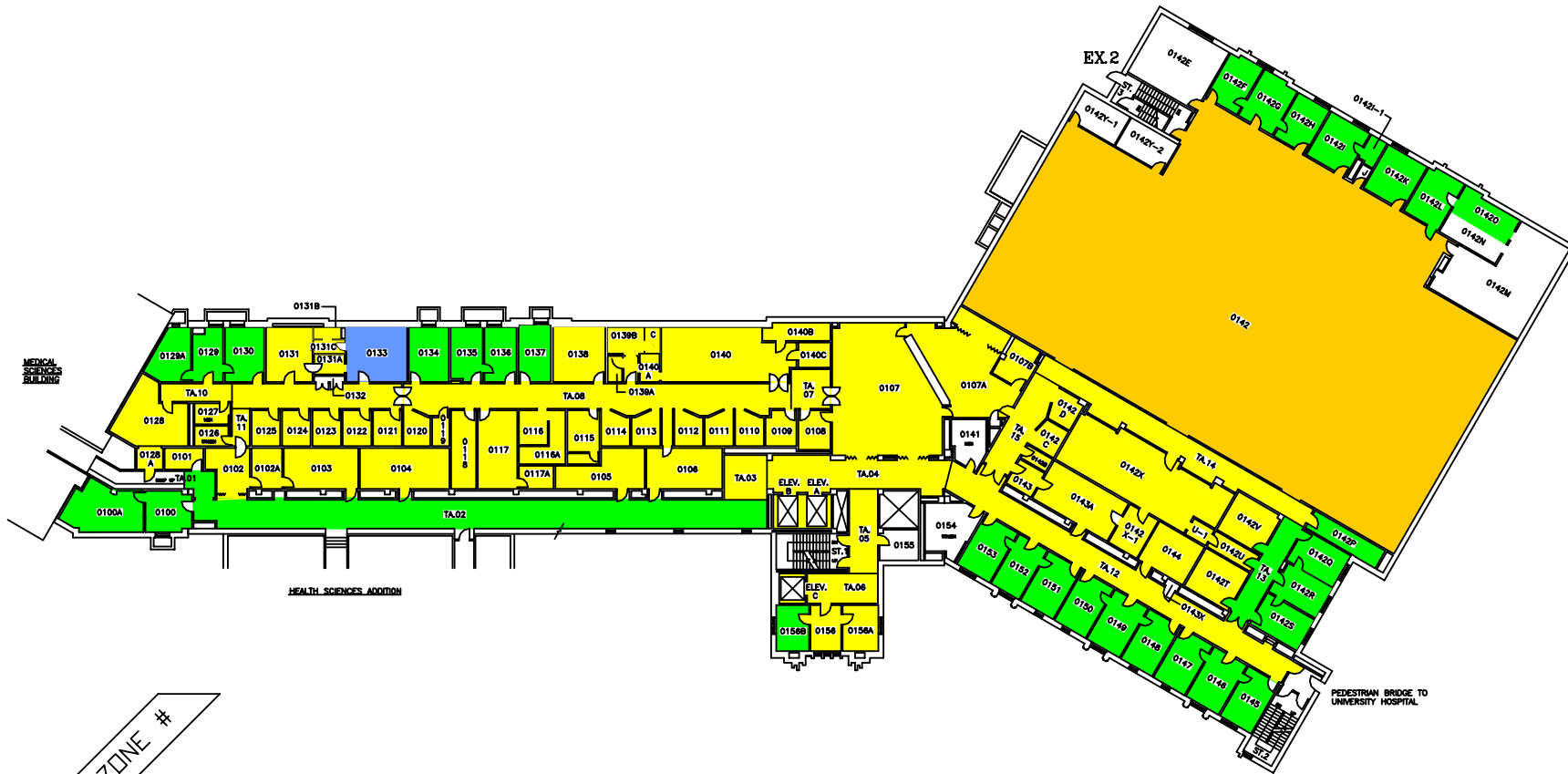
SCALE: 1" = 10'-0" (MINIMUM FLOOR PLAN - LEVELS 01 & 02 (BASEMENT & LOWER LOWER GROUND FLOORS))

MINIMUM FLOOR PLAN - LEVELS 01 & 02 (BASEMENT & LOWER LOWER GROUND FLOORS)

**DENTAL SCIENCES BLDG.**

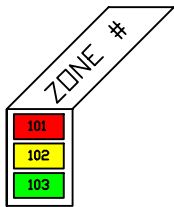
01





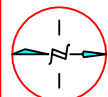
**THE UNIVERSITY of WESTERN ONTARIO**  
**PHYSICAL PLANT DEPARTMENT**

|  |                           |
|--|---------------------------|
|  | SCALE                     |
|  | DATE<br>98-01-21          |
|  | DRAWN BY<br>R. THOMAS     |
|  | CHECKED BY<br>[Signature] |
| <b>Facilities Engineering &amp; Construction</b> |                           |
| SCALE<br>  | SHEET NO.<br>DSB/MIN      |
| GEOMETRIC ELEV.<br>828.86 FT.                    |                           |
| MINATURE FLOOR PLAN - LEVEL 04<br>(GROUND FLOOR) |                           |
| <b>DENTAL SCIENCES BLDG.</b>                     |                           |
| <b>03</b>  |                           |



THE UNIVERSITY of WESTERN ONTARIO  
PHYSICAL PLANT DEPARTMENT

|                    |
|--------------------|
| SCALE              |
| DATE<br>98-08-08   |
| DRAWN<br>R. THOMAS |
| CHECKED            |
| APPROVED           |



Facilities Engineering & Construction

SCALE 1" = 10' 1/8" 1/4" 1/2" 3/4" 1" 1 1/4" 1 1/2" 2" 3" 4" 6" 8" 10" 12" 15" 20" 24" 30" 36" 48" 60" 840.86 FT.

MINIATURE FLOOR PLAN - LEVEL 05  
(FIRST FLOOR)  
DENTAL SCIENCES BLDG.

04



| SYSTEM | ZONE # |
|--------|--------|
| 101    | F      |
| 102    | G      |
| 103    | H      |
|        | I      |

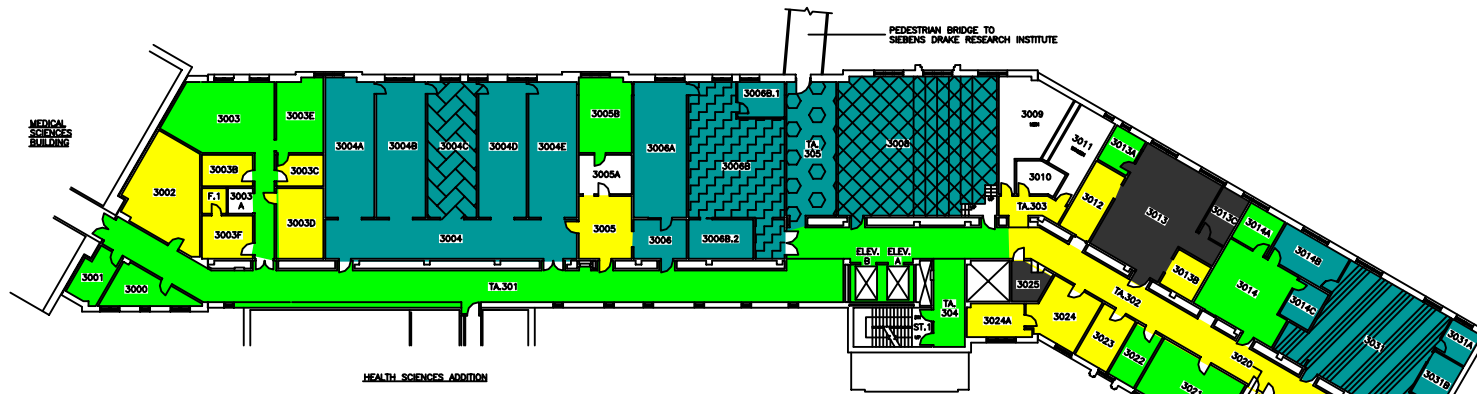
THE UNIVERSITY of WESTERN ONTARIO  
PHYSICAL PLANT DEPARTMENT

|  |             |
|--|-------------|
|  | N           |
|  | SCALE       |
|  | DATE        |
|  | DESIGNED BY |
|  | CHECKED BY  |

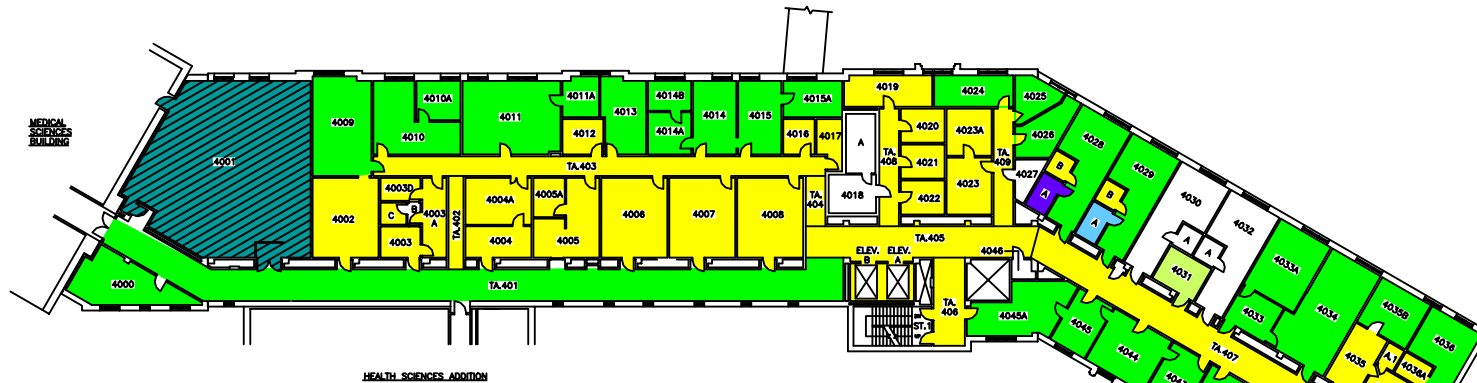
Facilities Engineering & Construction

MINIATURE FLOOR PLAN - LEVEL 06  
(SECOND FLOOR)

DENTAL SCIENCES BLDG.



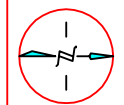
THIRD FLOOR



FOURTH FLOOR

| SYSTEM | ZONE # |
|--------|--------|
| 102    | A      |
| 103    | B      |
| 107    | C      |
| 108    | D      |
| 109    | E      |
| 110    | F      |
| 111    |        |

THE UNIVERSITY of WESTERN ONTARIO  
PHYSICAL PLANT DEPARTMENT



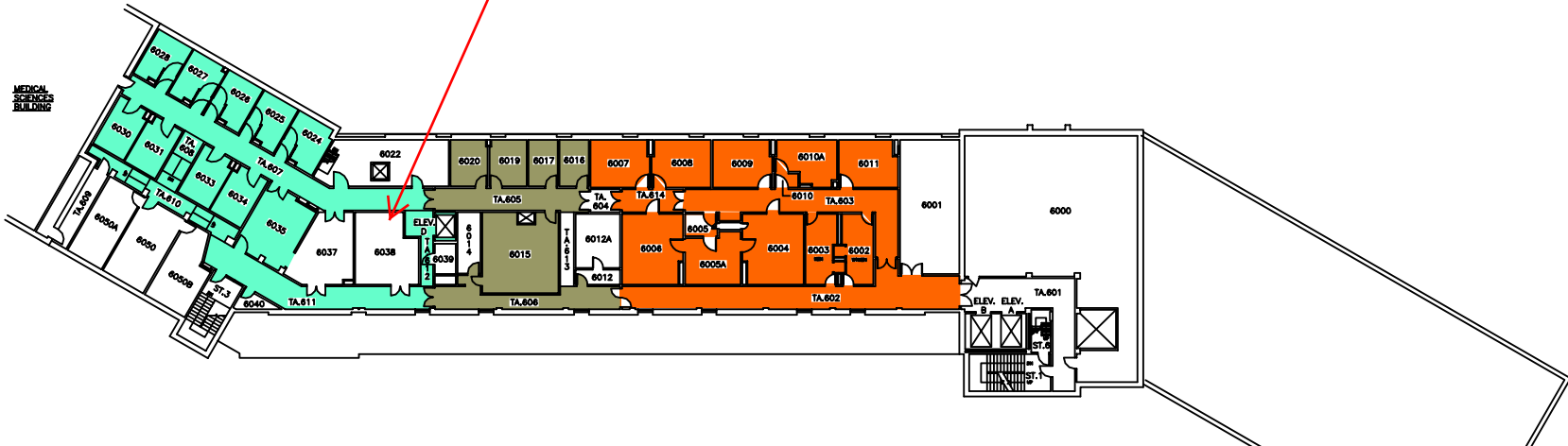
Facilities Engineering & Construction

MINIATURE FLOOR PLANS - LEVELS 07 & 08  
(3RD AND 4TH FLOORS)

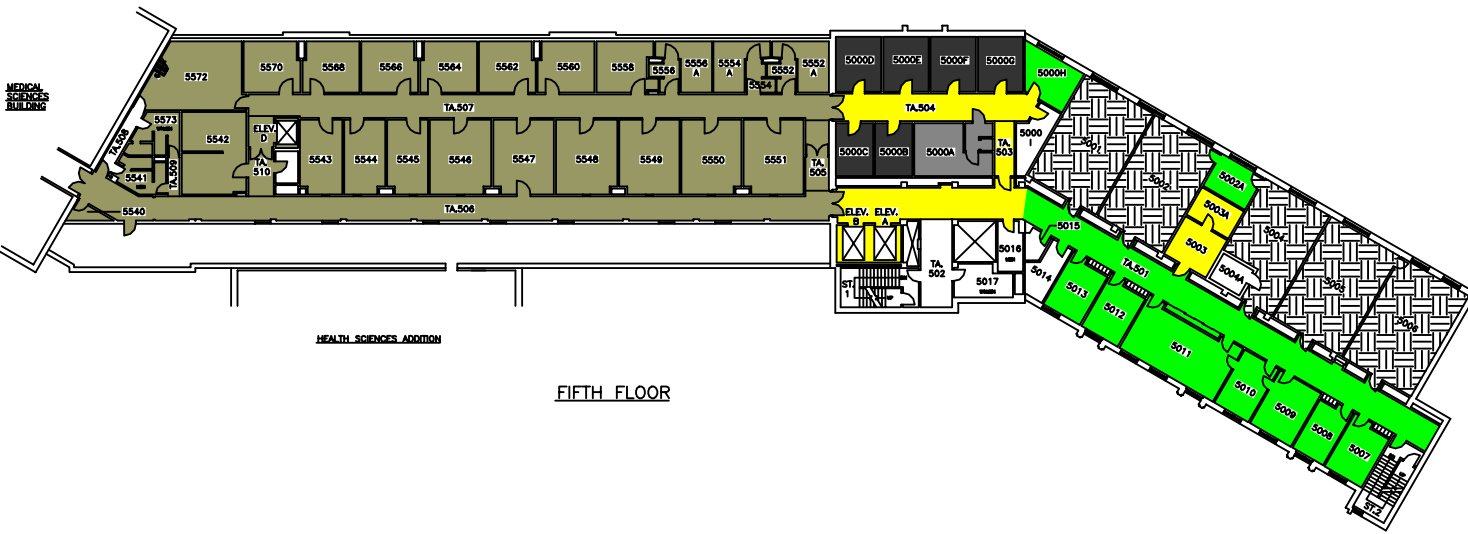
DENTAL SCIENCES BLDG.

SCALE  
98-01-22  
DRAWN BY  
R. THOMAS  
CHECKED BY  
APPROVED BY  
DWG FILE NO.  
DSB/MIN  
GEOMETRIC BLEV.  
VARIES  
SHEET  
06

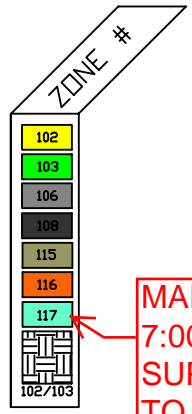
**MARCH 4, 2014  
7:00AM - NOON  
AREA OF WORK**



SIXTH FLOOR



FIFTH FLOOR



**MARCH 4, 2014  
7:00AM - NOON  
SUPPLY AIR FAN  
TO BE AFFECTED**

**THE UNIVERSITY of WESTERN ONTARIO  
PHYSICAL PLANT DEPARTMENT**

|  |                |
|--|----------------|
|  | SCALE          |
|  | 98-01-21       |
|  | DATE           |
|  | R. THOMAS      |
|  | CHECKED        |
|  | APPROVED       |
|  | DRAWN BY       |
|  | DSB/MIN        |
|  | GEOMETRIC BLVD |
|  | VARIABLE       |

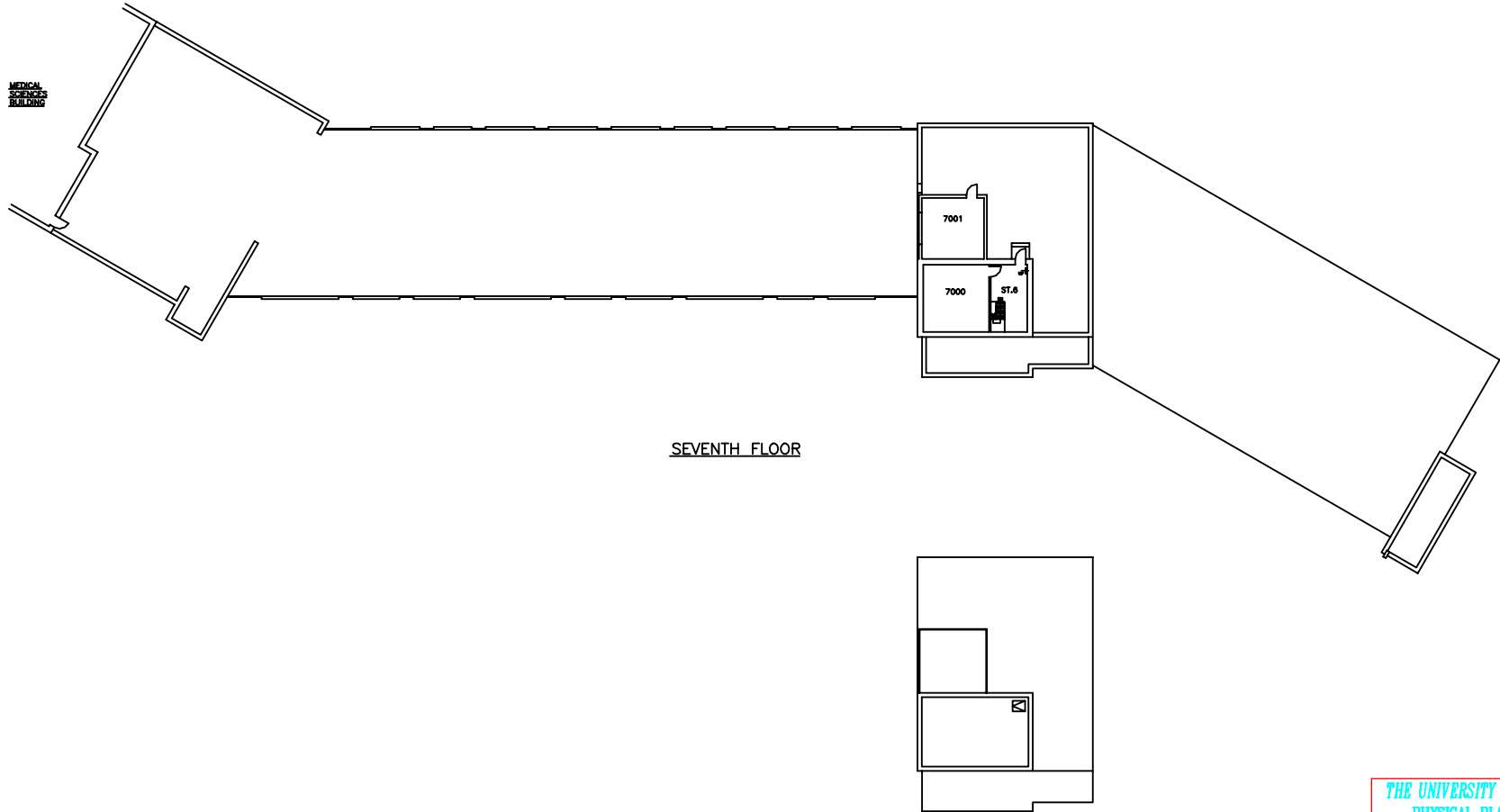
**Facilities Engineering & Construction**

SCALE: 1" = 10' 0" (1:120)

MINIATURE FLOOR PLANS - LEVELS 09 & 10 (5TH AND 6TH FLOORS)

DENTAL SCIENCES BLDG. 07

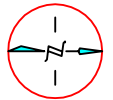




SEVENTH FLOOR

PENTHOUSE ROOF

THE UNIVERSITY of WESTERN ONTARIO  
PHYSICAL PLANT DEPARTMENT



Facilities Engineering & Construction

SCALE 0 5 10 15 20 25 30

MINIATURE FLOOR PLANS - LEVEL 11  
(PENTHOUSE FLOOR AND ROOF)

DENTAL SCIENCES BLDG.

|                 |           |
|-----------------|-----------|
| SCALE           | VARIES    |
| DATE            | 98-01-21  |
| DRAWN           | R. THOMAS |
| CHECKED         |           |
| APPROVED        |           |
| DRAWING No.     | DSB\MIN   |
| GEOMETRIC BLVD. | VARIES    |
| SHEET           | 08        |

# DENTAL SCIENCE - RM 5000/H

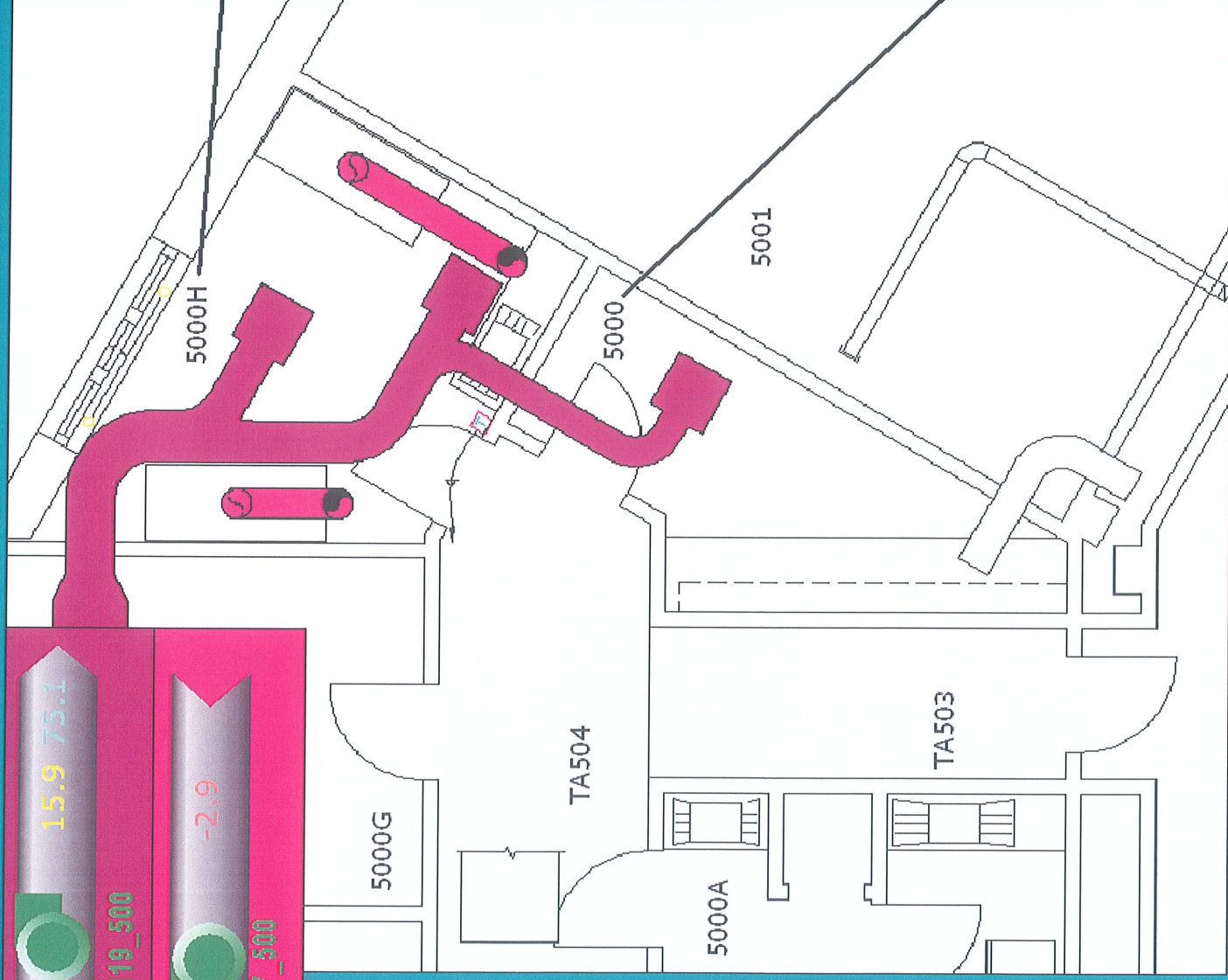
15.2  
76.1

15.9 75.1

119\_500

-2.9

007\_500



room

OFF ON

18.5  
calibration  
59.6 30.0  
calibration

Delta

room 5000

OFF ON

23.0 20.0  
calibration  
42.9 30.0  
calibration

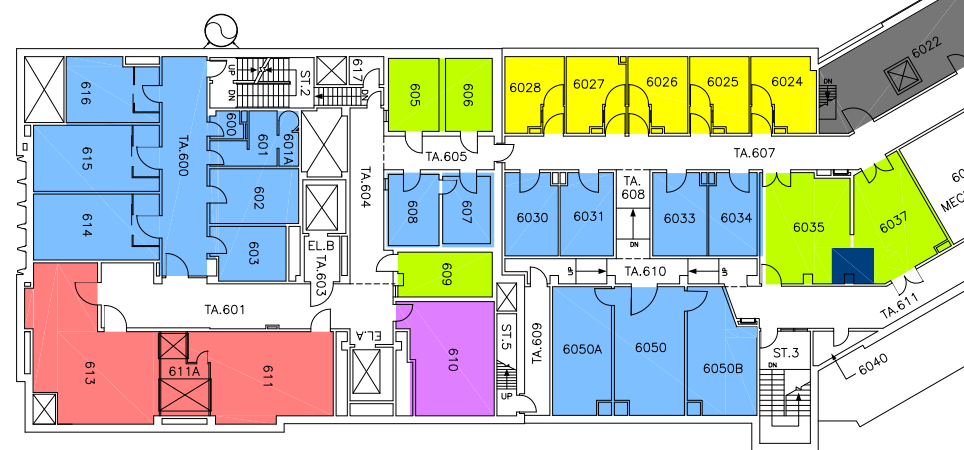
Delta

20.0 23.0

Previous



MSB / DSB – FIFTH FLOOR



MSB / DSB – SIXTH FLOOR

- CAGE WASHER
- INCINERATOR
- OFFICES
- LUNCH ROOM/STAFF ROOM

- AUTOCLAVE
- AUXILLARY SUPPORT ROOM
- BARRIER ROOMS (INCLUSION/EXCLUSION)
- BIO-HAZARD LEVEL 3
- DOG RUNS
- DOGS/PIGS
- INCLUSION/QUARANTINE/BIOHAZARD
- LAB/TREATMENT/PROCEDURE
- CFI QUARANTINE
- RABBITS/CATS
- RODENTS/RABBITS
- SURGERY SUITE/PREP AREA

EXISTING ROOM USAGES  
R. THOMAS  
09-08-21

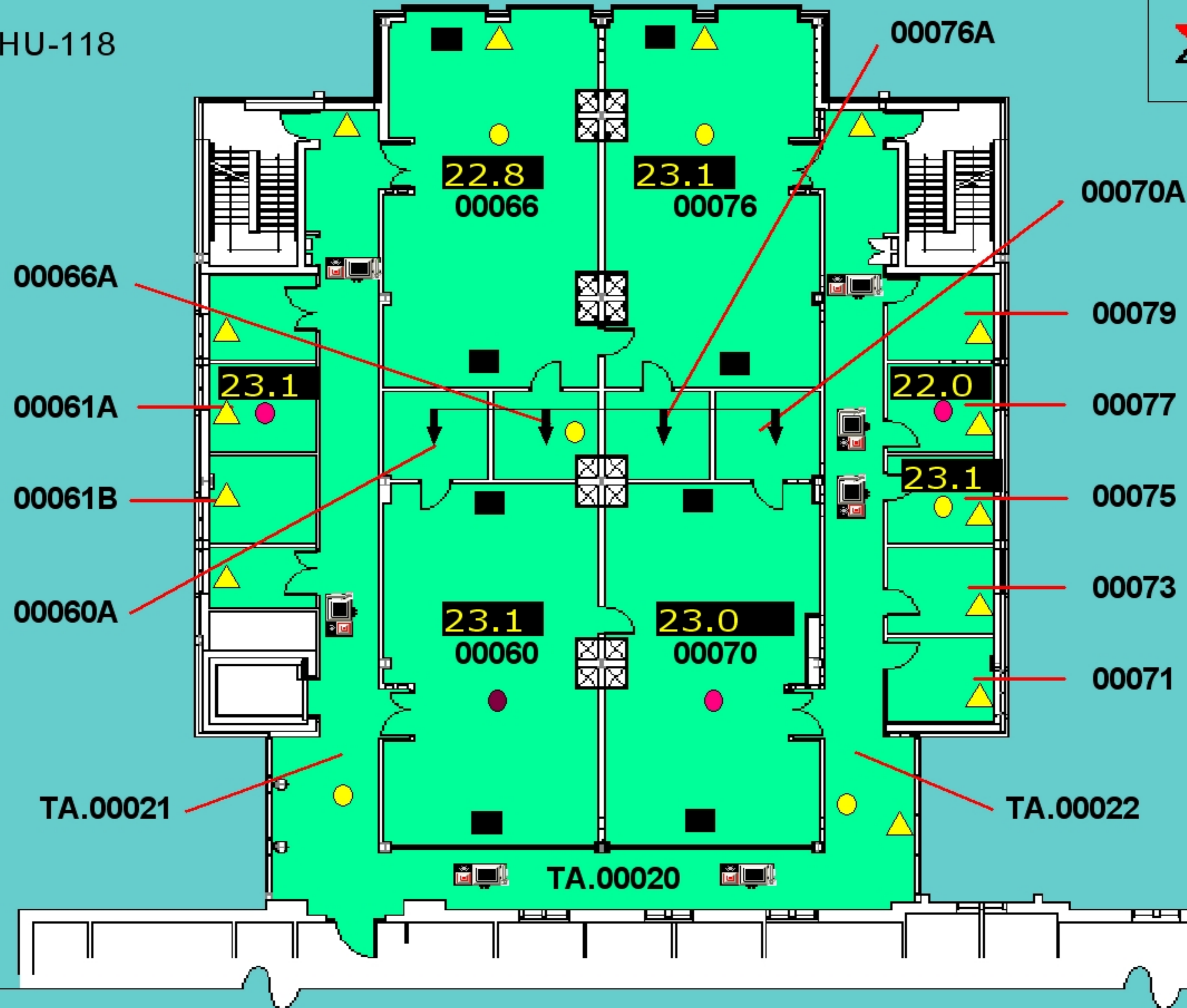
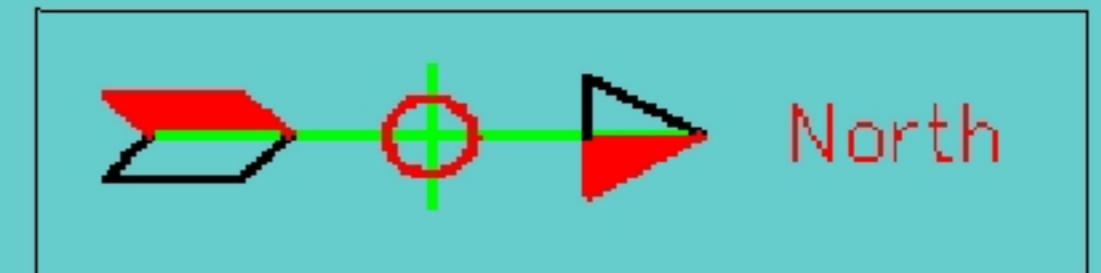
|   |  |
|---|--|
| <b>THE UNIVERSITY of WESTERN ONTARIO</b><br>PHYSICAL PLANT & CAPITAL PLANNING SERVICES                            |  |
|   | SCALE<br>DATE<br>2006-01-03<br>DRAWN<br>R. THOMAS<br>CHECKED<br><br>APPROVED |
| <b>Facilities Engineering</b>   | DWG. FILE No.<br>MSB_MIN-5&6<br>GEODETIC ELEV.<br>SHEET<br>01                |
| SCALE<br>0 5 10 15 20 25 30 35 40 45 50<br>5TH & 6TH FLOOR PLANS<br><b>MEDICAL SCIENCES &amp; DENTAL SCIENCES</b> |  |

# Dental Sciences Building - Lower Gnd

Colour Block Legend :

Supplied Air by AHU-118  
SAT **15.1**

26.4°C  
34.1%



**VAV Exhaust Box**  
■

**Perimeter Valve**  
▲ 25% OPEN  
▲ 50% OPEN  
▲ 75% OPEN  
▲ 100% OPEN

**Reheat Valve**  
● 25% OPEN  
● 50% OPEN  
● 75% OPEN  
● 100% OPEN

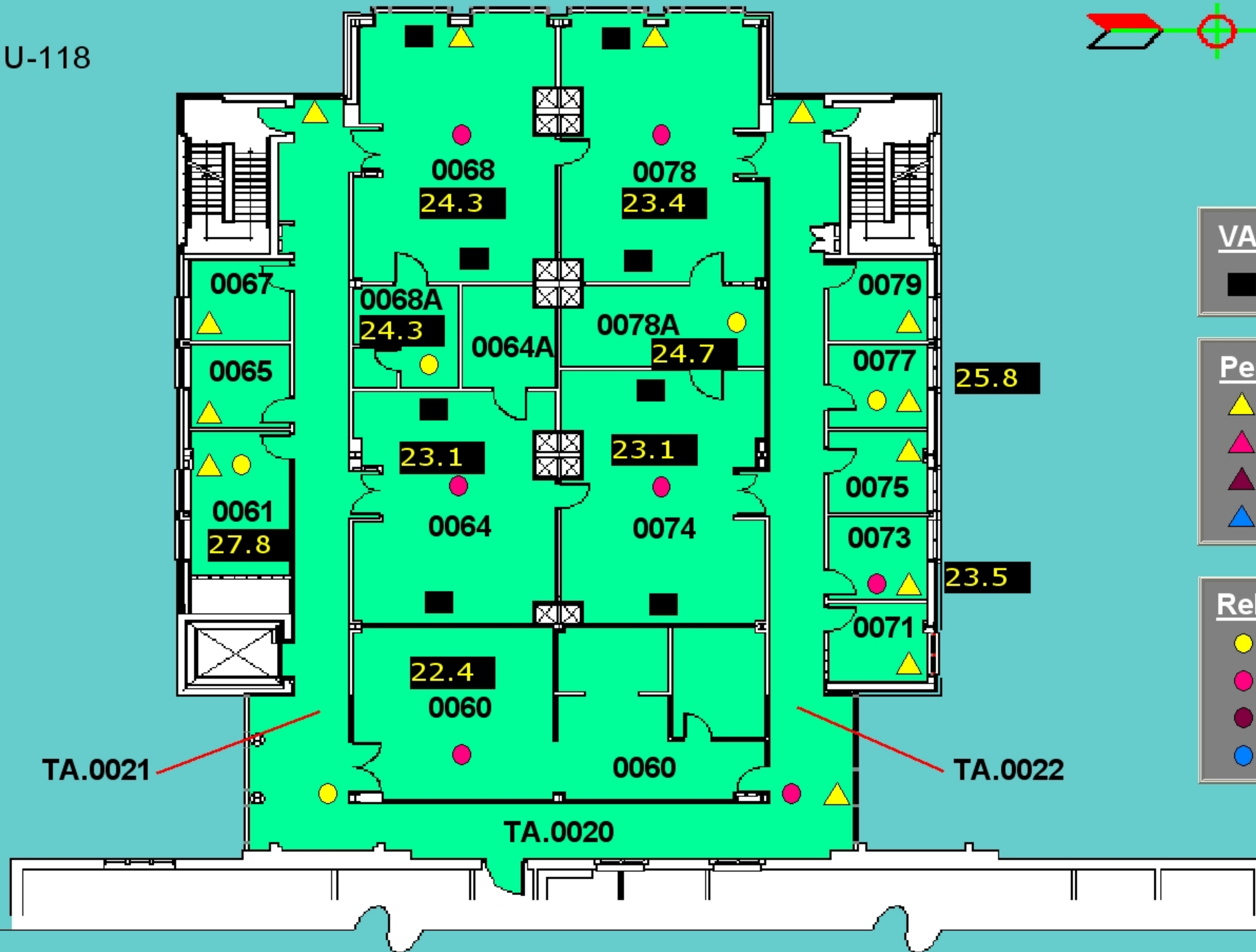
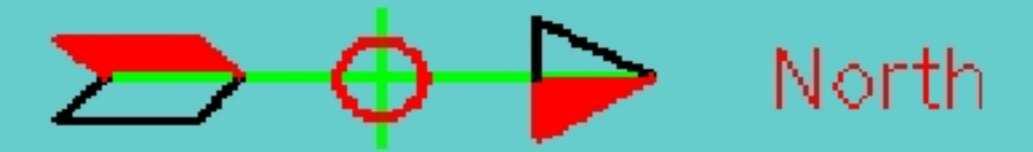
Previous

# Dental Sciences Building - West Lower Gnd. Floor

Colour Block Legend :

Supplied Air by AHU-118

SAT **15.1**



VAV Exhaust Box  
■

Perimeter Valve  
▲ 25% OPEN  
▲ 50% OPEN  
▲ 75% OPEN  
▲ 100% OPEN

Reheat Valve  
● 25% OPEN  
● 50% OPEN  
● 75% OPEN  
● 100% OPEN

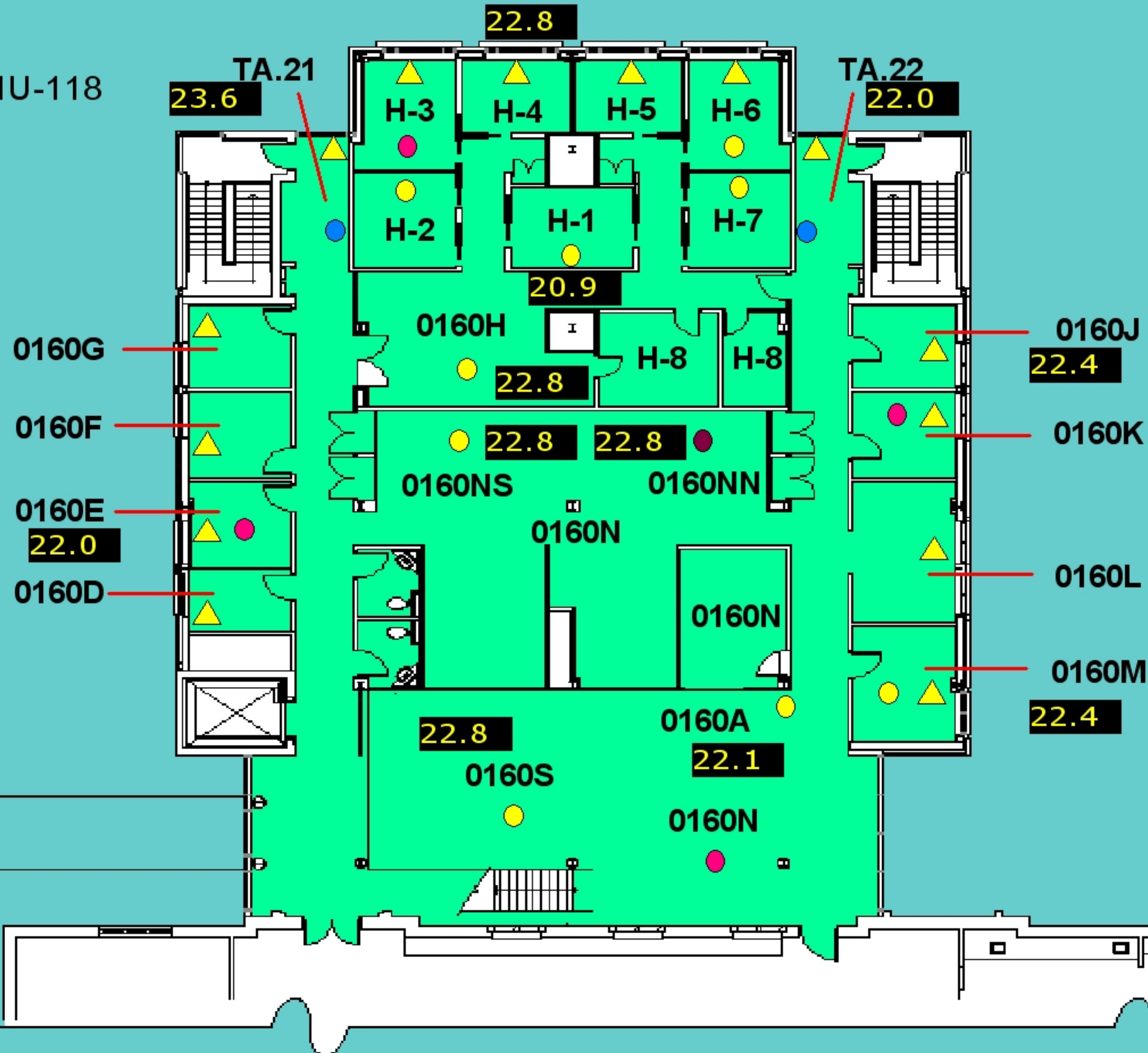
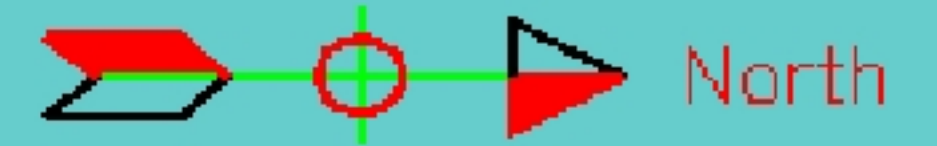
Previous

# Dental Sciences Building - West Gnd. Floor

Colour Block Legend :

Supplied Air by AHU-118

SAT **15.1**



**Perimeter Valve**

- ▲ 25% OPEN
- ▲ 50% OPEN
- ▲ 75% OPEN
- ▲ 100% OPEN

**Reheat Valve**

- 25% OPEN
- 50% OPEN
- 75% OPEN
- 100% OPEN

Previous