



Western UNIVERSITY • CANADA

Notice of Service Interruption/Area Closure
Western University
Facilities Management
Client Services 519-661-3304 (fmhelp@uwo.ca)

Submit by E-mail

Print Form

Date of Interruption/Closure: August 27, 28, & 29, 2014
Time(s): 7:00 AM - 12:00 PM

Building(s) Affected: #1 Dental Sciences Building, #2, #3, #4

Areas/Rooms Affected Alternate Route/Service: Fans 101, 102, 103, 104, & 113 will be shut down for work in ground floor and 1st floor ceilings.

Service to be interrupted: #1 HVAC Fans 101, 102, 103, 104 & 113, #2, #3, #4

Description/Reason for Project: Ceiling access for tie-ins and connections of mechanical & electrical services to renovated area D1008

Requester: Tonda/ Besterd / Angton Date of Request: Aug 21, 2014

Supervising Tradesperson: Unit:

Trade Supervisor: Unit: Date:

Contractor: Tonda - Mike Willems / Besterd Mech / Angton Electric Phone #: +1 (519) 617-2430

Coordinator/Project Manager: Mike DeJager Phone #: 88737 Date: Aug 23, 2014

Reviewed by Trade Supervisor(s)/Shop(s) Affected: Name: WES Date: Name: Steve MacKay Date:

Signature/Stamp: REVIEWED By Dan Trudgeon (fminterr@uwo.ca) at 1:36 pm, Aug 26, 2014 Signature/Stamp: Steve MacKay

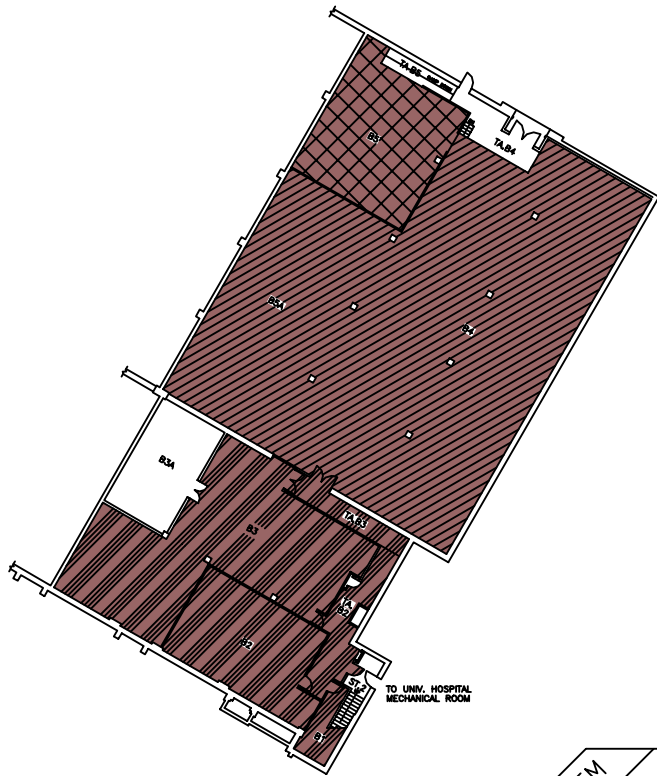
Reviewed by: Name: Mike DeJager Date: Aug 23, 2014 Principal Occupants: Name: kevin inchley Ext. Date:

Signature/Stamp: Mike DeJager Name: shawn wilson Ext. Date:

Approval to Proceed: Date: Approval to Proceed: Date:

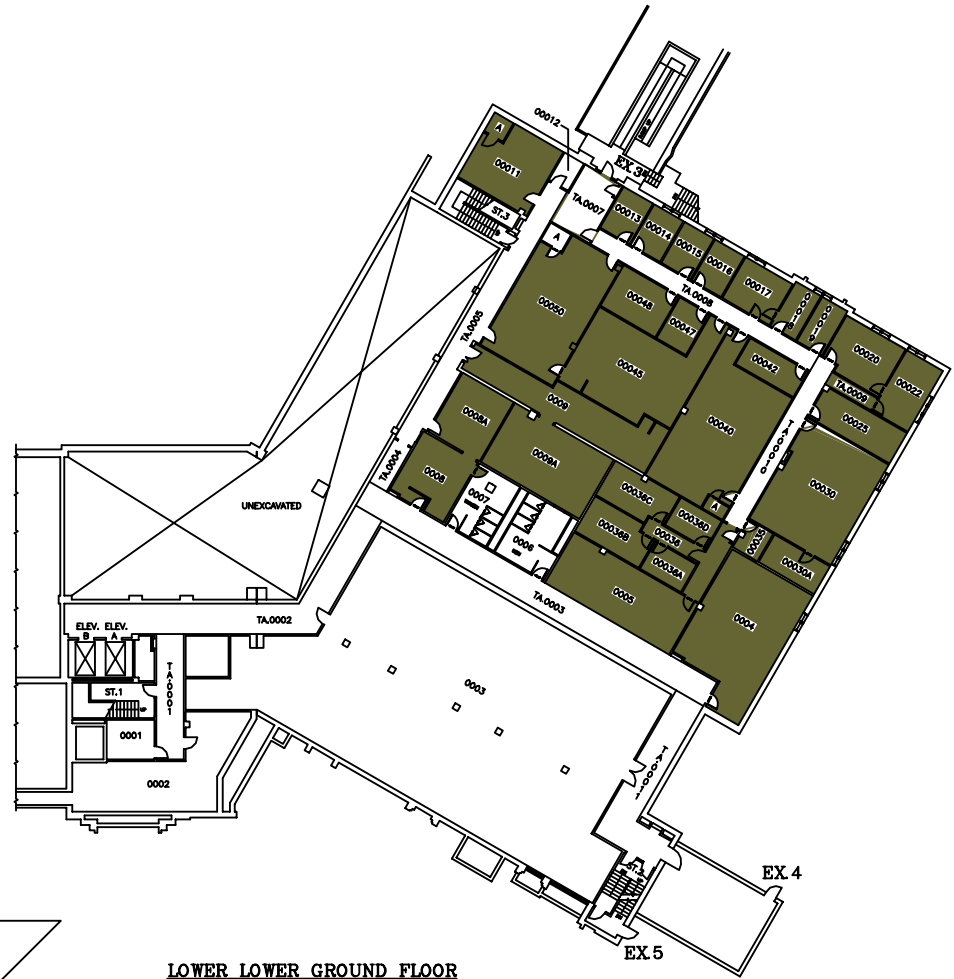
APPROVED By Dan Trudgeon (fminterr@uwo.ca) at 1:38 pm, Aug 26, 2014

Notes: Continue to use WO 500556 please. Darryl Stanley and Ron Humphrey to complete work during this shutdown on 3rd floor.



BASEMENT FLOOR

787.88 FT.



LOWER LOWER GROUND FLOOR

798.89 FT.

SYSTEM	ZONE #
113	A
114	B
	C

THE UNIVERSITY of WESTERN ONTARIO
PHYSICAL PLANT DEPARTMENT

SCALE: Varies
 DATE: W8-01-28
 DRAWN BY: R. THOMAS
 CHECKED BY: []
 APPROVED BY: []
 SHEET NO.: DSB/MIN
 QUANTITY: Varies

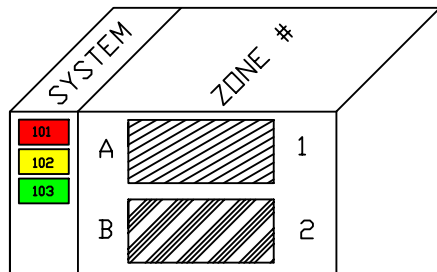
Facilities Engineering & Construction

SCALE: 1" = 16' 0"

MINIATURE FLOOR PLAN - LEVELS 01 & 02 (BASEMENT & LOWER LOWER GROUND FLOORS)

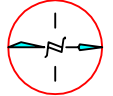
DENTAL SCIENCES BLDG.

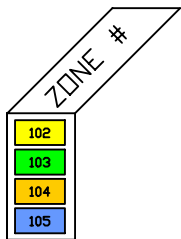
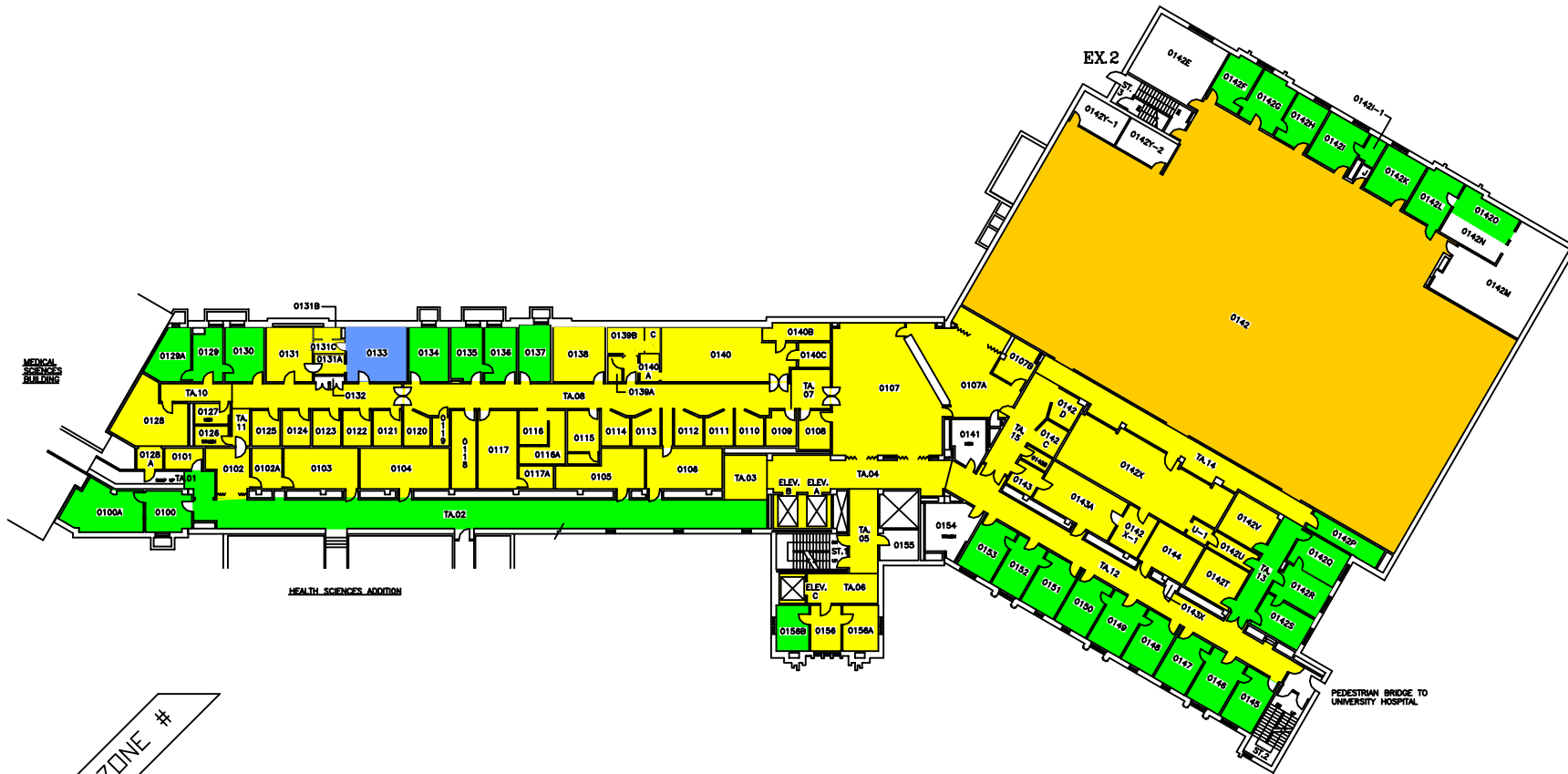
01



EX 1

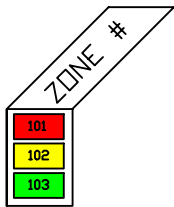
On behalf of amerucci
 FAN 101, 102, 103, 104 & 113
 NEED TO BE SHUTDOWN
 WHEN WORK IN THE
 CEILING IS REQUIRED

THE UNIVERSITY of WESTERN ONTARIO		PHYSICAL PLANT DEPARTMENT	
	SCALE	DATE	98-09-11
	DRAWN	BY	R. THOMAS
	CHECKED	DATE	
	APPROVED	DATE	
Facilities Engineering & Construction		PROJECT No.	DSB\MIN
SCALE 1" = 10' 1/8" 1/4" 1/2" 3/4" 1" 1 1/4" 1 1/2" 2" 3" 4" 6" 8" 10"		COORDINATE ELEV.	812.80 FT.
MINIATURE FLOOR PLAN - LEVEL 03 (LOWER GROUND FLOOR)		NO.	02
DENTAL SCIENCES BLDG.			



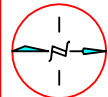
THE UNIVERSITY of WESTERN ONTARIO
PHYSICAL PLANT DEPARTMENT

	SCALE
	DATE 98-01-21
	DRAWN BY R. THOMAS
	CHECKED BY [Signature]
Facilities Engineering & Construction	
SCALE 	GEOMETRIC ELEV. 828.86 FT.
MINATURE FLOOR PLAN - LEVEL 04 (GROUND FLOOR)	
DENTAL SCIENCES BLDG.	
03	



THE UNIVERSITY of WESTERN ONTARIO
PHYSICAL PLANT DEPARTMENT

SCALE
DATE 98-08-08
DRAWN R. THOMAS
CHECKED
APPROVED



Facilities Engineering & Construction

SCALE 1" = 10' 1/8" 1/4" 1/2" 3/4" 1" 1 1/4" 1 1/2" 2" 3" 4" 5" 6" 8" 10" 12" 15" 20" 25" 30" 40" 50" 60" 80" 100'

MINIATURE FLOOR PLAN - LEVEL 05
(FIRST FLOOR)

DENTAL SCIENCES BLDG.



SYSTEM	ZONE #
101	
102	F
103	G
	H
	I

THE UNIVERSITY of WESTERN ONTARIO
PHYSICAL PLANT DEPARTMENT

	SCALE
	DATE 98-09-08
	DRAWN R. THOMAS
	CHECKED
	APPROVED

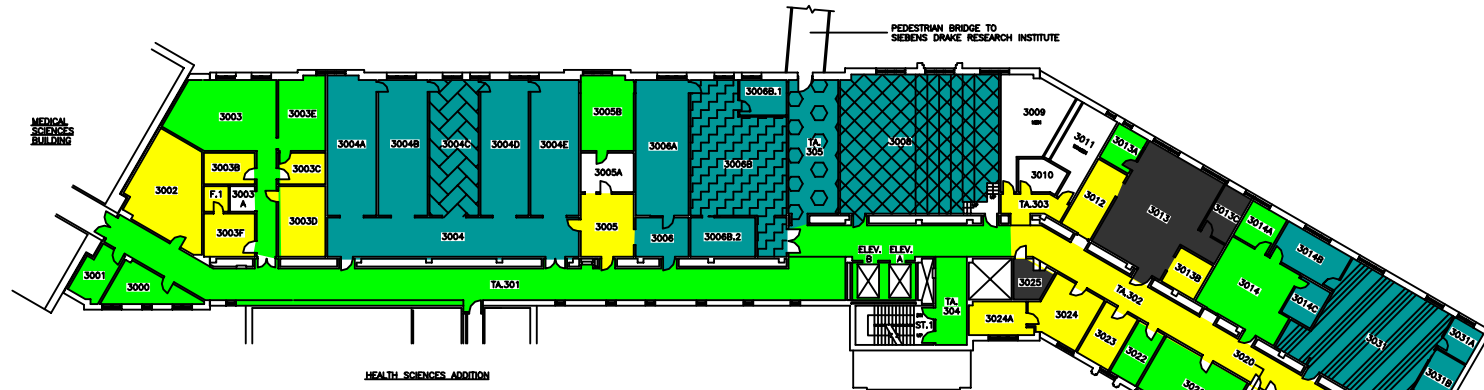
Facilities Engineering & Construction

SCALE 1" = 10' 1/8" 1/2" 1" 2" 3" 4" 5" 6" 8" 10" 12" 15" 20" 25" 30" 40" 50" 60" 80" 100"

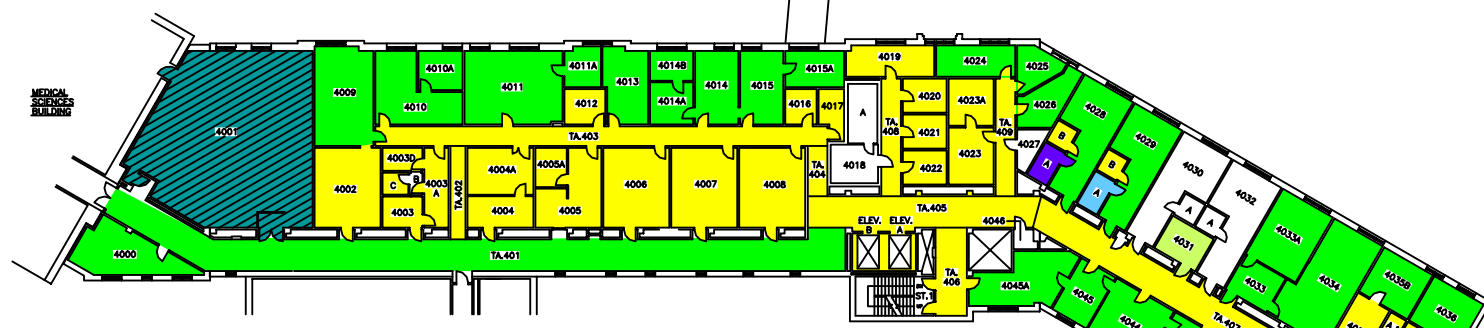
MINIATURE FLOOR PLAN - LEVEL 06
(SECOND FLOOR)

DENTAL SCIENCES BLDG.

854.86 FT.
05



THIRD FLOOR

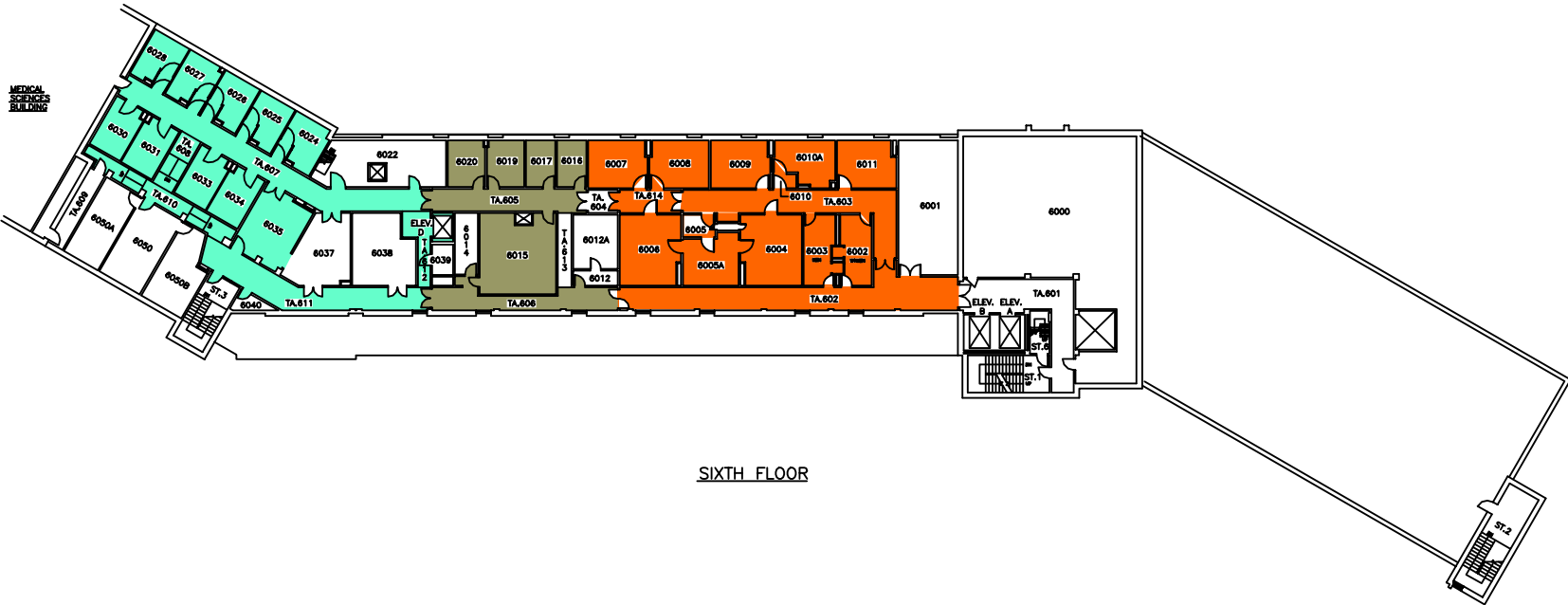


FOURTH FLOOR

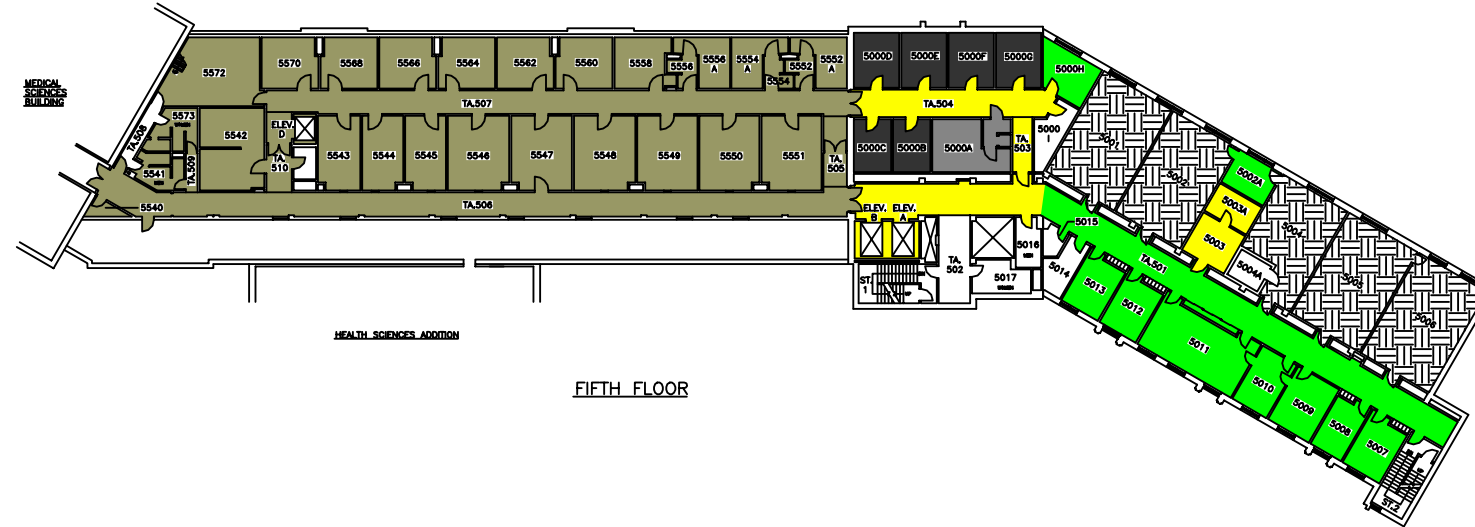
SYSTEM	ZONE #
102	A
103	B
107	C
108	D
109	E
110	F
111	

THE UNIVERSITY of WESTERN ONTARIO
PHYSICAL PLANT DEPARTMENT

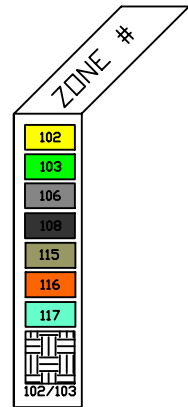
	SCALE
	DATE 98-01-22
	DESIGNED BY R. THOMAS
	CHECKED BY [Signature]
Facilities Engineering & Construction SCALE 1" = 10' 0" 1/2" = 20' 0" 1/4" = 40' 0" 1/8" = 80' 0" 1/16" = 160' 0"	
MINIATURE FLOOR PLANS - LEVELS 07 & 08 (3RD AND 4TH FLOORS)	
DENTAL SCIENCES BLDG.	
06	



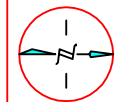
SIXTH FLOOR



FIFTH FLOOR



THE UNIVERSITY of WESTERN ONTARIO
PHYSICAL PLANT DEPARTMENT



Facilities Engineering & Construction

SCALE: 1" = 10' 1/8" 1/4" 1/2" 1" 2" 4" 8" 16"
MINIATURE FLOOR PLANS - LEVELS 09 & 10
(5TH AND 6TH FLOORS)

DENTAL SCIENCES BLDG.

SCALE	1" = 10'
DATE	98-01-21
DESIGNED BY	R. THOMAS
CHECKED BY	
APPROVED BY	
DRAWN BY	DSB/MIN
GEOMETRIC BLEV.	VARIES
HEET	07