



Notice of Service Interruption/Area Closure
Western University
Facilities Management
Client Services 519-661-3304 (fmhelp@uwo.ca)

Submit by E-mail
 Print Form

Date of Interruption/Closure: Time(s): **REVISED**
3:28 pm, Mar 07, 2016

Building(s) Affected: #1 #2
 #3 #4

Areas/Rooms Affected Alternate Route/Service:

Service to be interrupted: #1 #2
 #3 #4

Description/Reason for Project:

Requester: Date of Request:

Supervising Tradesperson: Unit:

Trade Supervisor: Unit: Date:

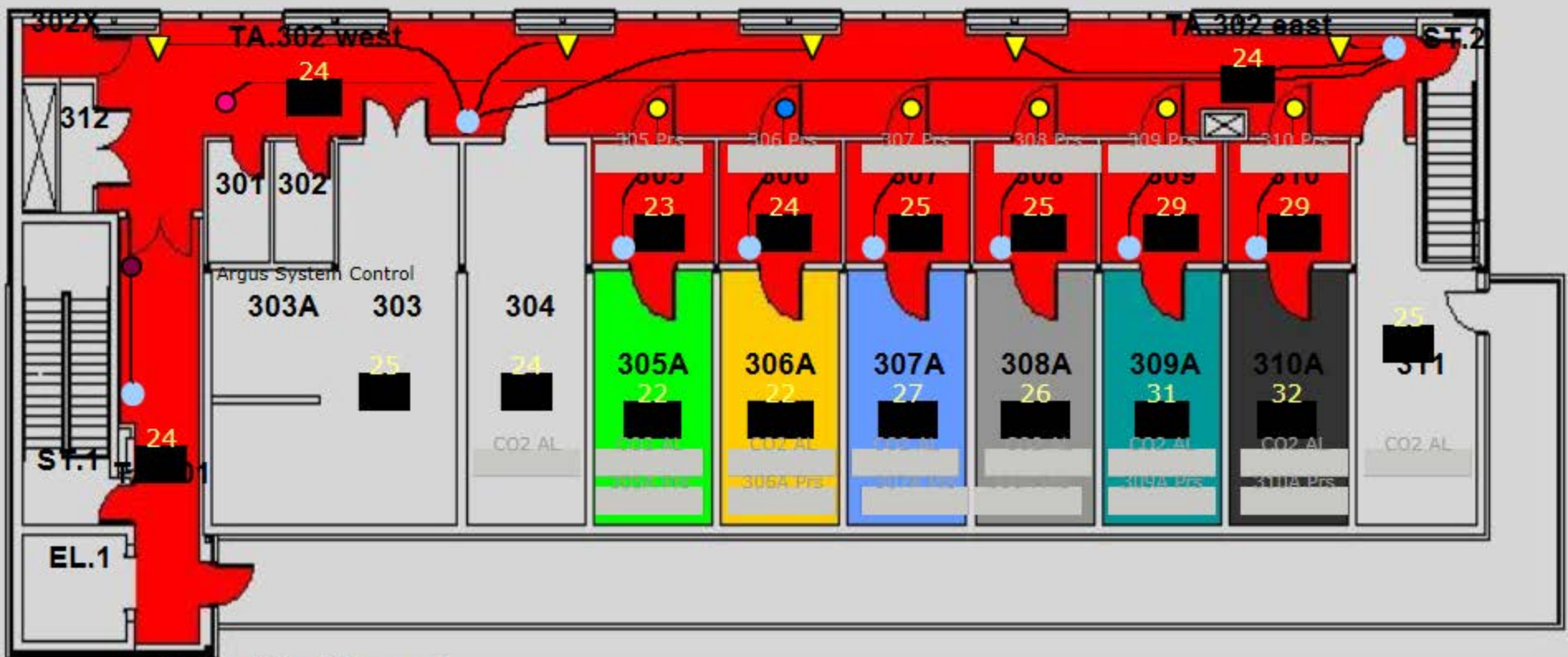
Contractor: Phone #

Coordinator/Project Manager: Phone # Date:

Reviewed by Trade Supervisor(s)/Shop(s) Affected:

Name: WES Control	Date:	Name:	Date:
Signature/Stamp: REVIEWED <small>By Wayne Drummond (ppdwad@uwo.ca) at 9:43 am, Mar 07, 2016</small>		Signature/Stamp:	
Name:	Date:	Principal Occupants:	
Signature/Stamp:		Name:	Ext. Date:
Name:	Date:	Name:	Ext. Date:
Signature/Stamp:		Name:	Ext. Date:
Name:	Date:	Name:	Ext. Date:
Signature/Stamp:		Approval to Proceed: <input type="text"/> Date: <input type="text"/>	
Name:	Date:	APPROVED <small>By Dan Trudgeon (fminterr@uwo.ca) at 9:50 am, Mar 07, 2016</small>	
Signature/Stamp:			

Notes:



Colour Block Legend :

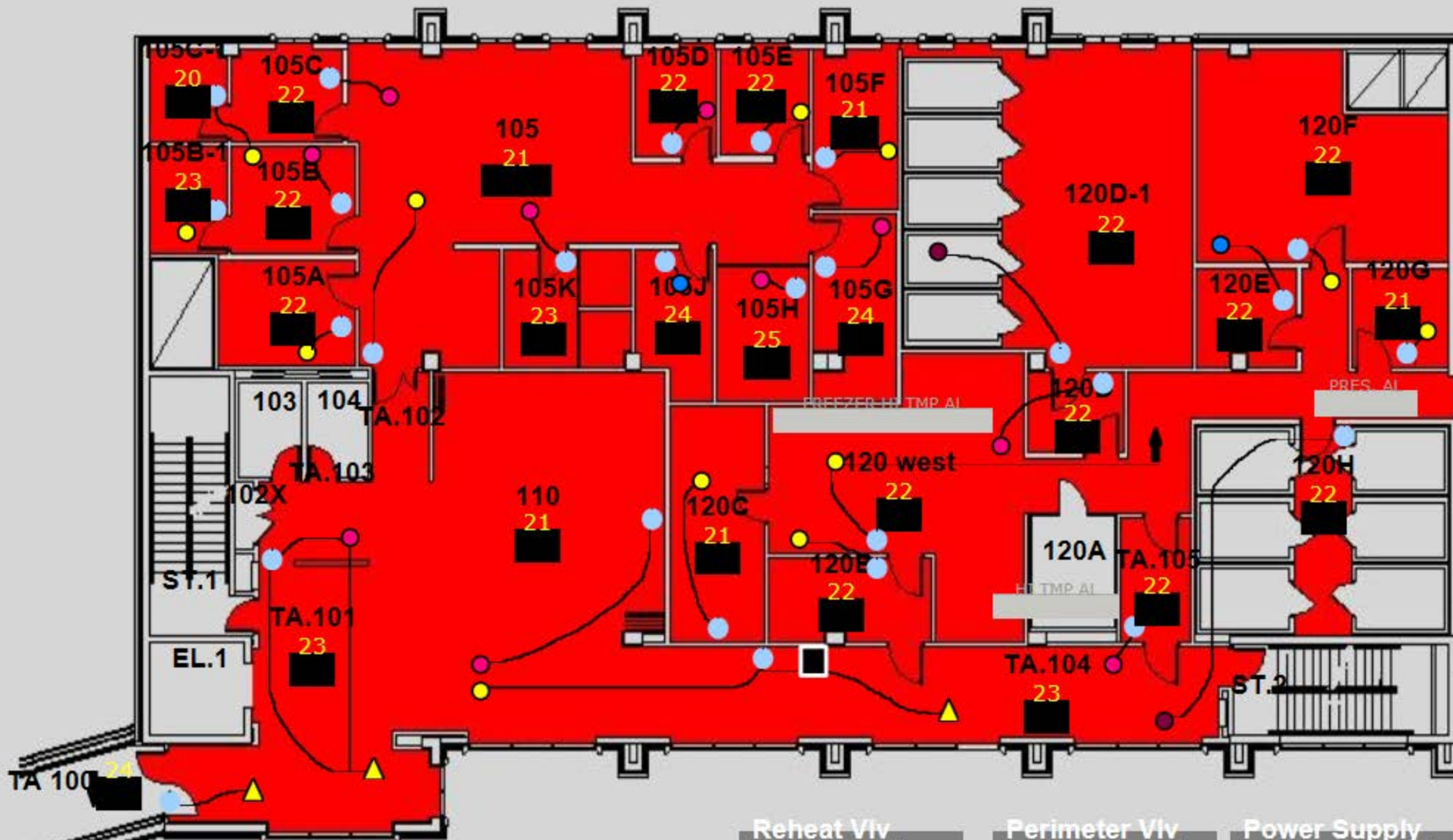
- Supplied Air by AHU 101
- Supplied Air by AHU 103
- Supplied Air by AHU 104
- Supplied Air by AHU 105
- Supplied Air by AHU 106
- Supplied Air by AHU 107
- Supplied Air by AHU 108

Reheat Vlv

- 25% OPEN
- 50% OPEN
- 75% OPEN
- 100% OPEN

Perimeter Vlv

- ▲ 25% OPEN
- ▲ 50% OPEN
- ▲ 75% OPEN
- ▲ 100% OPEN



Colour Block Legend :
■ Supplied Air by AHU_101

Reheat Vlv

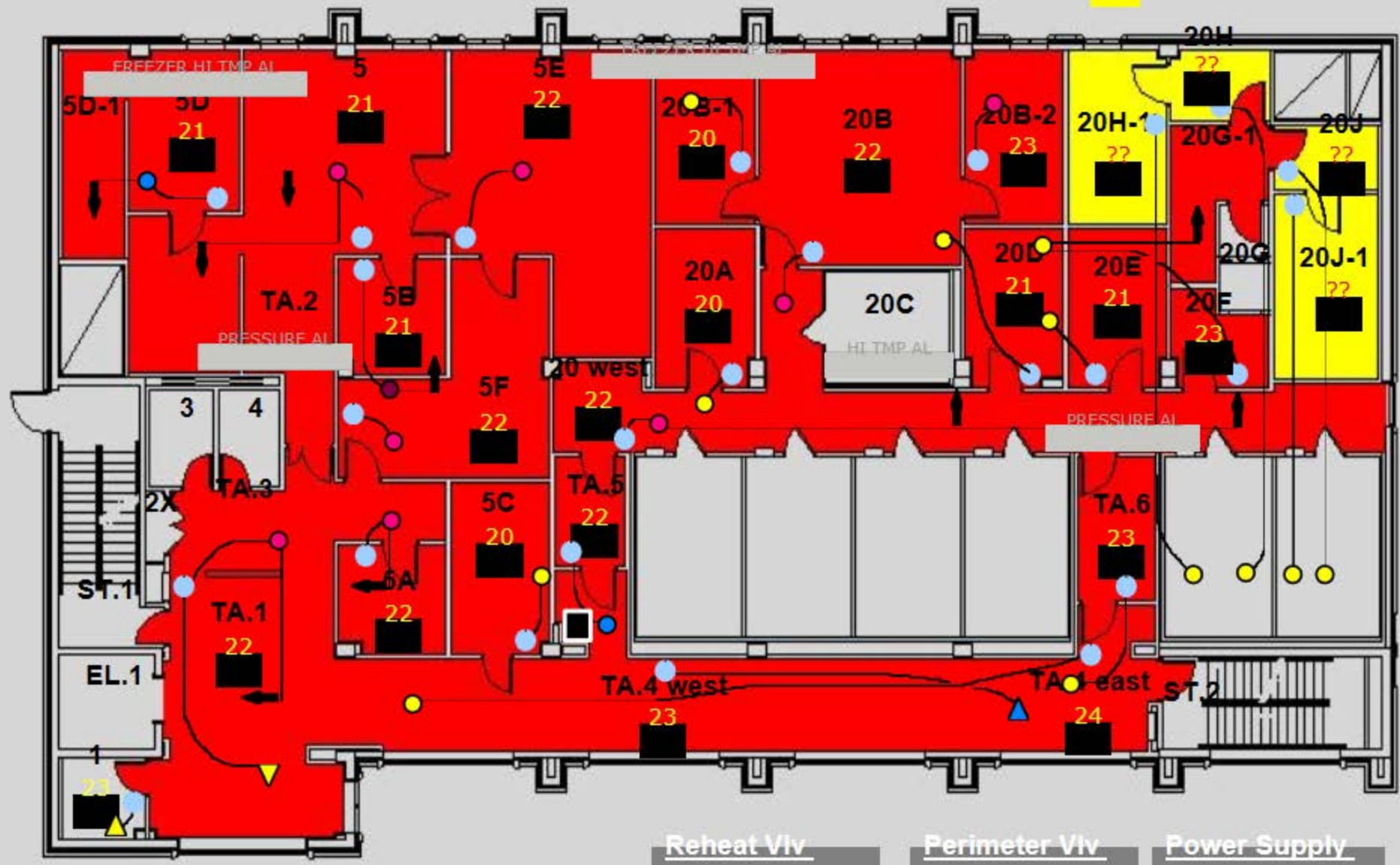
●	25% OPEN
●	50% OPEN
●	75% OPEN
●	100% OPEN
●	100% OPEN

Perimeter Vlv

▲	25% OPEN
▲	50% OPEN
▲	75% OPEN
▲	100% OPEN

Power Supply

■	Power Pack Panel E1S CCT #9
---	-----------------------------



Colour Block Legend :

- Supplied Air by AHU 101
- Supplied Air by AHU 102

Reheat Vlv

- 25% OPEN
- 50% OPEN
- 75% OPEN
- 100% OPEN
- 100% OPEN

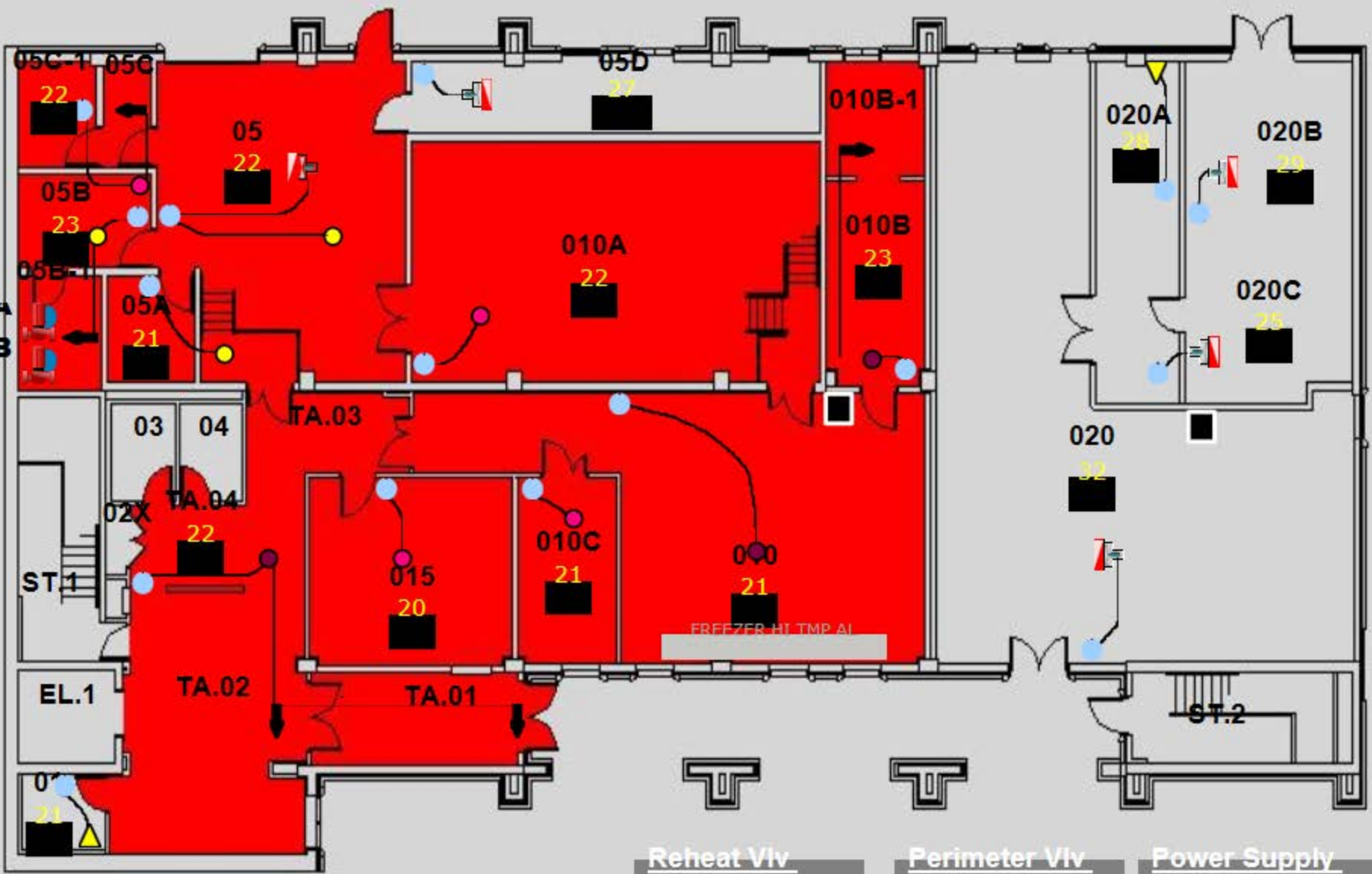
Perimeter Vlv

- ▲ 25% OPEN
- ▲ 50% OPEN
- ▲ 75% OPEN
- ▲ 100% OPEN
- ▲ 100% OPEN

Power Supply

- Power Pack
- Panel EGS
- CCT #11

302_303A
303_505B



Colour Block Legend :
■ Supplied Air by AHU_101

Reheat Vlv

- 25% OPEN
- 50% OPEN
- 75% OPEN
- 100% OPEN
- 100% OPEN

Perimeter Vlv

- ▲ 25% OPEN
- ▲ 50% OPEN
- ▲ 75% OPEN
- ▲ 100% OPEN

Power Supply

- Power Pack Panel EBS CCT #6