



WebCT OWL



**Selective Release
in OWL**

Overview

The following guide will help you to use the Selective Release feature in OWL. This feature makes your WebCT content visible to students based on criteria of your choosing. For example, you may wish to hide an upcoming quiz's date until the day of the quiz. With the right settings, Selective Release can automatically "unhide" your item on that date.

For any given item on your course's WebCT site, you will learn how to specify:

- the Date that it should appear
- to which Groups it should appear
- to which Members of the class it should appear
- by Grade, to which members an item will appear

Accessing Selective Release

The Selective Release link appears:

- In the Build Tab: under Designer Tools
 - In the Teach tab: under Instructor Tools
- ... at the bottom left of the page.



Choosing an item for Selective Release

After clicking the Selective Release link, a page entitled Selective Release Map appears. On this page is a hierarchy of your website, where any folder, module, or file added to your page may be chosen for Selective Release. Selective Release will not apply to items that have been manually hidden.

Click the Set Release Criteria button for your desired item to set the criteria.

Linked to		Release Criteria
Workshop Tour	Show Item	Set Release Criteria
Module 1: Workshop Orientation	Hide Item	Set Release Criteria
Module 2: The Student Experience	Hide Item	Set Release Criteria

When you click the Hide Item button, items will no longer appear to students, nor can you view them in the Student View. Hidden items will appear faded in the Build and Teach tabs.

Setting the Criteria for Selective Release

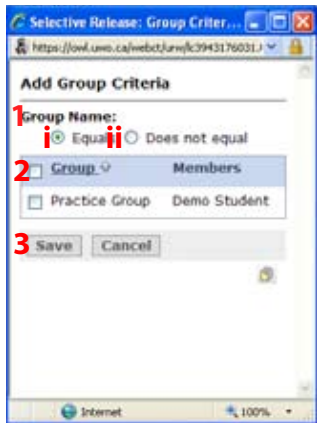
1 Add Date Criteria 2 Add Member Criteria 3 Add Group Criteria 4 Add Grade Book Criteria

No release criteria have been specified. Please use the controls above to specify release criteria.

Save Cancel

On this page, four buttons appear across the top: (1)Add Date Criteria, (2)Add Member Criteria, (3)Add Group Criteria, and (4)Add Grade Criteria. Clicking a button on this page will open the corresponding pop-up window where specific criteria can be added to the item.

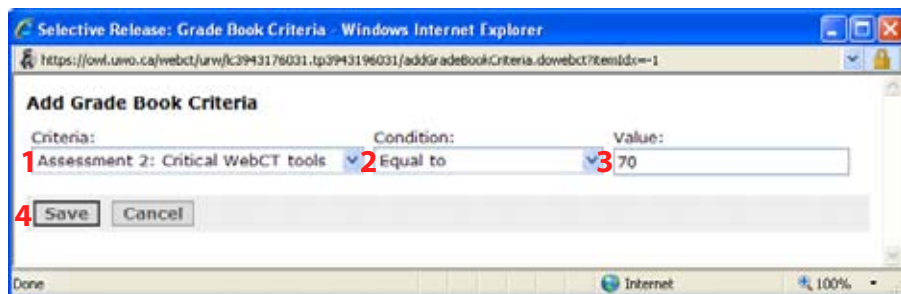
3. Add Group Criteria



Click the **Add Group Criteria** button. The resulting pop-up offers the following options:

1. **Group Name:** determines which groups in the Group table (2) can access the item, based on one of two conditions. Please note: a group must have been previously created for this option to work.
 - i. **Equals:** if this option is selected, only members of a Group with a checkmark beside its name WILL be able to see the item. (i.e., if the checkbox beside 'Pracitce Group' is checked, then all members of that group will be able to access the item.)
 - ii. **Does not equal:** if this option is selected, members of a Group with a checkmark beside its name WILL NOT be able to see the item. (i.e., if the checkbox beside 'the group' is checked, then all members of that group will not be able to access the item.)
2. **Group Table:** the names of all Groups appear here. Click the first checkbox to select or deselect all groups.
3. Click **Save** to preserve your changes and return to the Set Criteria page. (Cancel discards changes made here.)

4. Add Grade Book Criteria

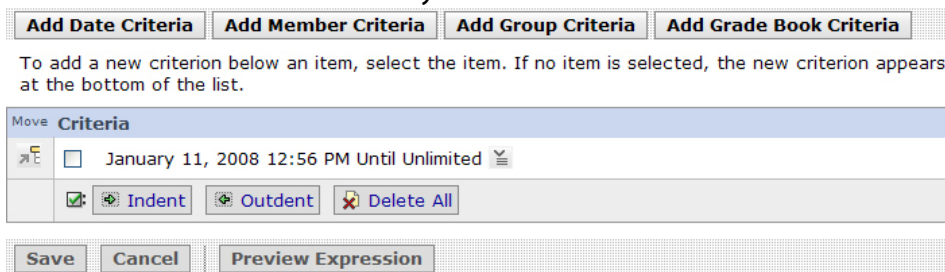


Click on **Add Grade Book Criteria**. The pop-up that opens contains 3 options:

1. **Criteria:** the item whose grade will serve as the criteria for the release of the current item. **Criteria** should always be something other than the current item.
2. **Condition:** how the grade for (1)**Criteria** will be evaluated against the Value (i.e., Equal to, Greater than, Begins with, Contains, etc.)
3. **Value:** the grade (be it percentage, letter, or otherwise) that will trigger the Selective Release when it satisfies (2)**Condition**.
4. Click **Save** to preserve your changes and return to the Set Release Criteria page.

Viewing your Finished Criteria

The Set Criteria page will reflect the changes to your criteria in a table listing all criteria for the item. These will take effect as soon as you click Save.



**** IMPORTANT: ****

When you've finished adding your criteria to the item, you must click **Save** on this page to record your changes. Otherwise, your criteria will be lost.

